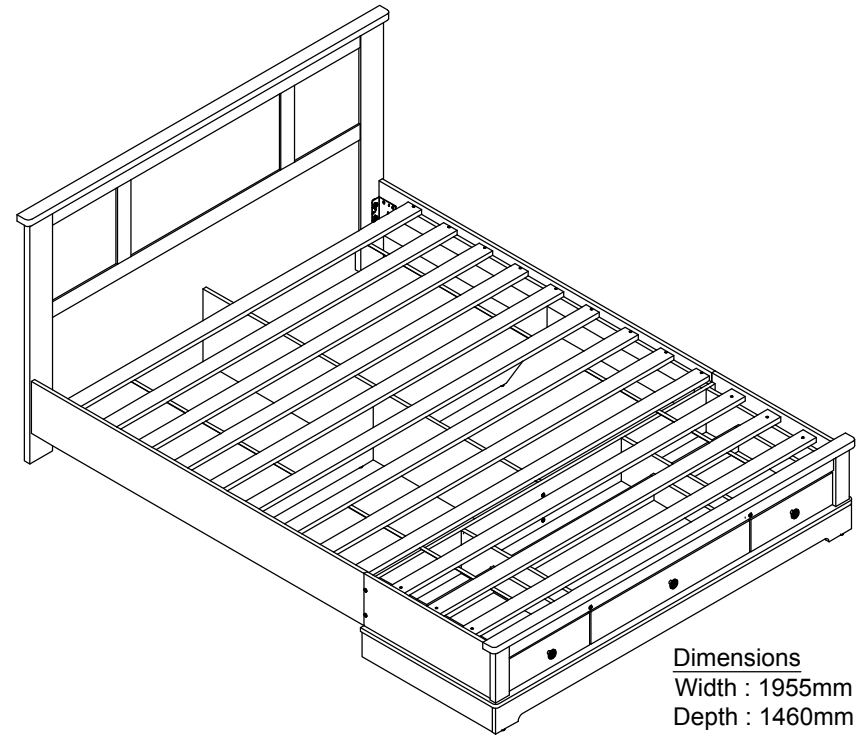


COCO SERIES ASSEMBLY INSTRUCTION



Dimensions
Width : 1955mm
Depth : 1460mm
Height : 950mm

CCO-DBED137-WHT DOUBLE BED FRAME

IMPORTANT :-
PLEASE READ THESE INSTRUCTION CAREFULLY BEFORE STARTING ASSEMBLY.

IMPORTANT TIPS AND MAINTENANCE



i) Keep children and animal away from working area because smaller part could choke if swallowed.



ii) Never put the liquid or damp on the furniture.



iii) To avoid dulling, do not place directly to the sunlight.



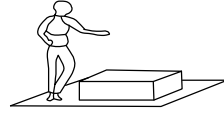
iv) Never use ammonia cleaning product, because it will damage to finish.



v) Use a soft or damp cloth (dry cloth) and then wipe to clean on the surface.



vi) Two person are required.



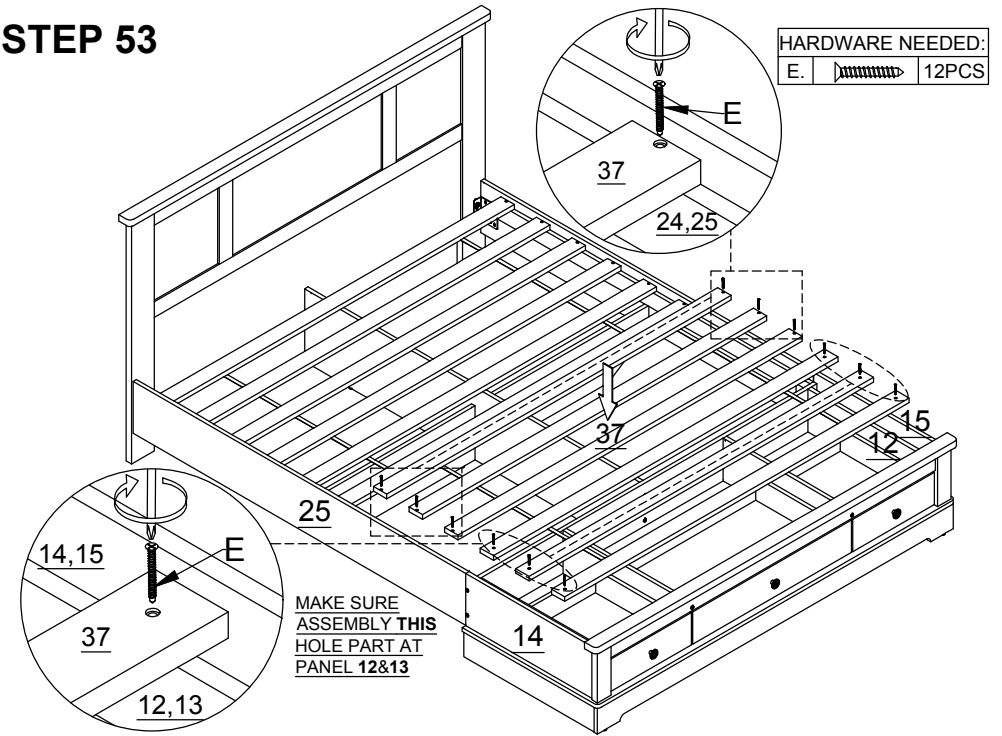
vii) Put the soft mat on the floor to protect the furniture before assembly.

**COMPONENTS :-
HARDWARE**

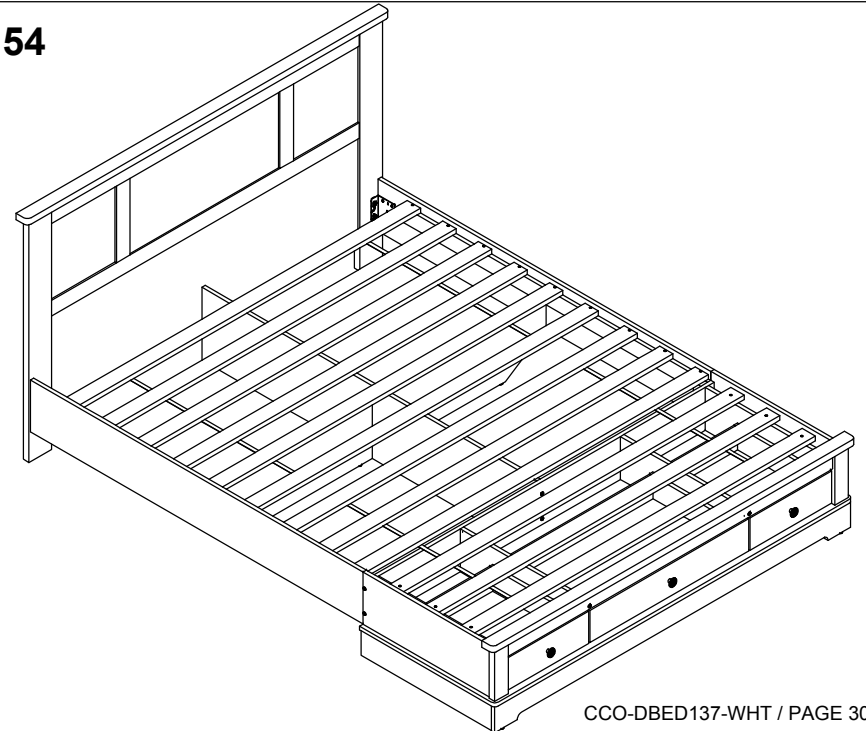
Please check you have all the fittings part or tools are listed in below.

NO.	FITTINGS/TOOLS	QTY	NO.	FITTINGS/TOOLS	QTY
A.	DOWEL 6x30MM	114 Pcs	K.	BED BRACKET	4 Pcs
B.	BOLT M6 X 16MM	8 Pcs	L.	PVC AIR HOLE	8 Pcs
C.	SCREW M3.5x12MM	38 Pcs	M.	BOLT M6x50MM	9 Pcs
D.	JOINT BRACKET	3 Pcs	N.	M6X50MM	20 Pcs
E.	SCREW M4 X 30MM	26 Pcs	O.	SCREW M4x38MM	6 Pcs
F.	FLANGE NUT	8 Pcs	P.	HANDLE	3 Pcs
G.	SPANNER	1 Pc	Q.	HANDLE SCREW 19MM	3 Pcs
H.	CAM BOLT+CAM NUT	53 Sets	R.	ALLEN KEY	1 Pc
I.	PVC GLIDE	16 Pcs	S.	DRAWER RUNNER A - L/R	6 Pcs
J.	SCREW M3.5 X 16MM	46 Pcs	T.	DRAWER RUNNER B - L/R	6 Pcs



STEP 53

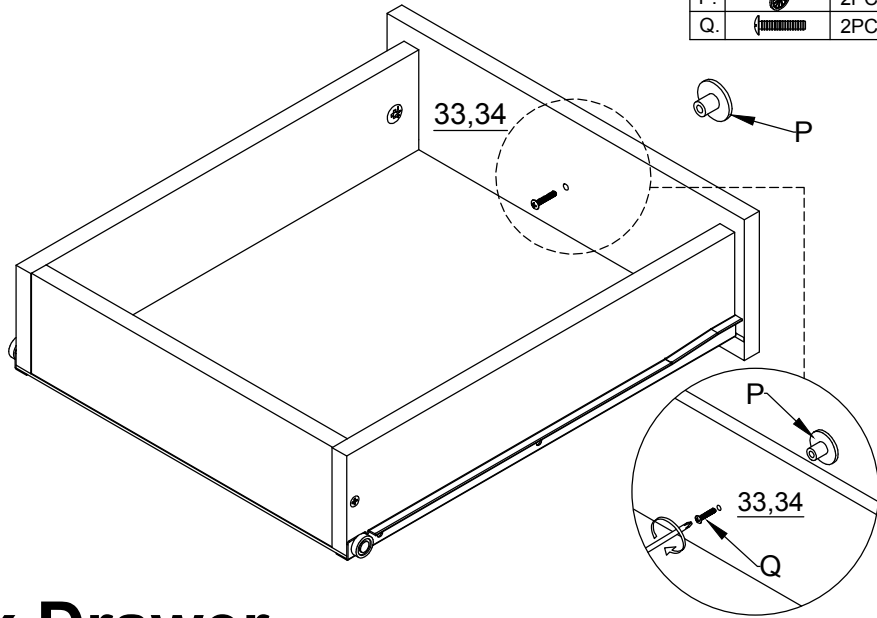


STEP 54

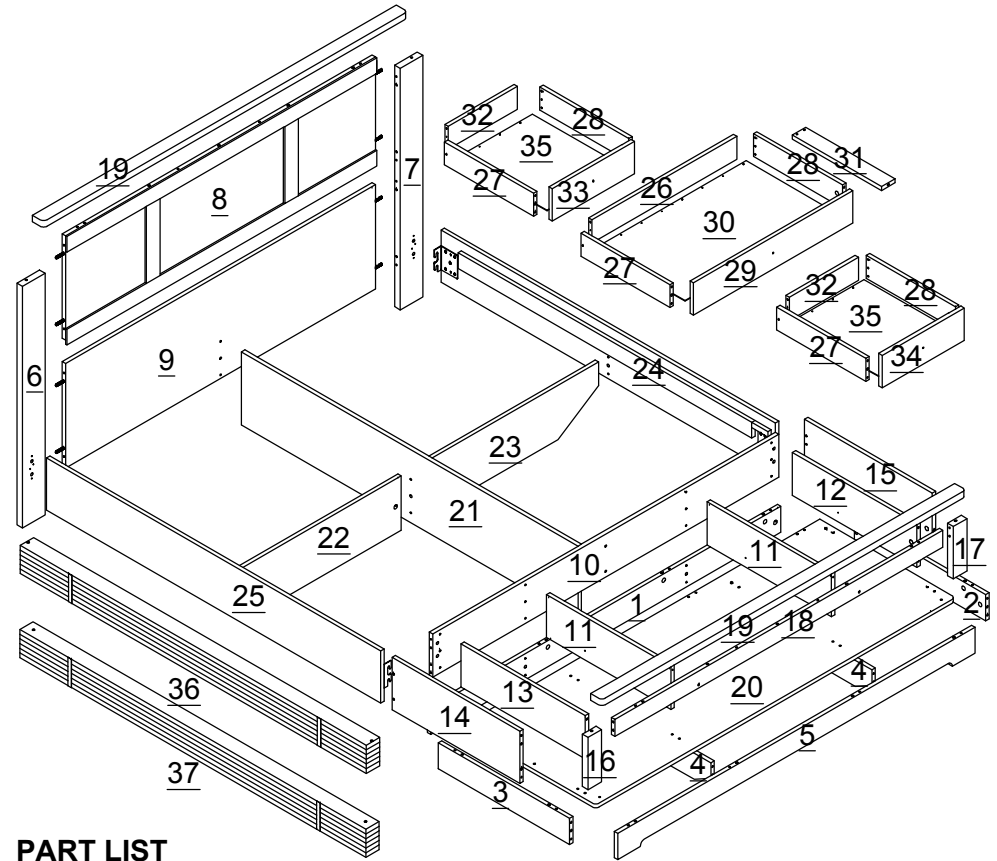


STEP 51

HARDWARE NEEDED:		
P.		2PCS
Q.		2PCS



COMPONENTS :- Please check you have all the panels are listed below.
PANELS




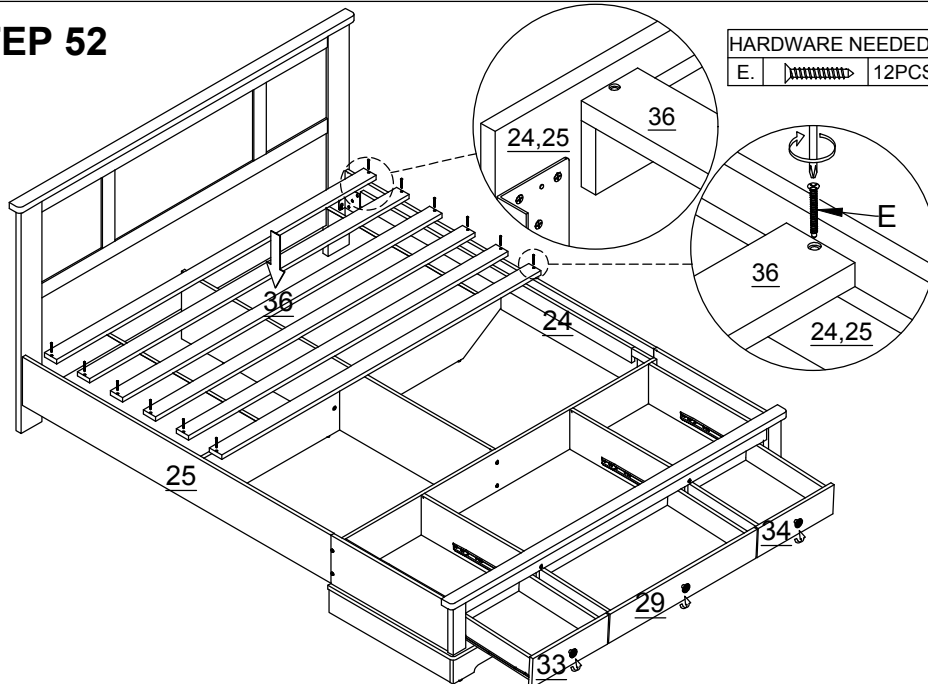
PART LIST

1	BACK LEG FOOTBOARD	1pc
2	SIDE LEG FOOTBOARD_RIGHT	1pc
3	SIDE LEG FOOTBOARD_LEFT	1pc
4	MIDDLE LEG FOOTBOARD	2pcs
5	FRONT LEG FOOTBOARD	1pc
6	LARGE PILLAR LEG_LEFT	1pc
7	LARGE PILLAR LEG_RIGHT	1pc
8	HEADBOARD UPPER	1pc
9	HEADBOARD LOWER	1pc
10	BACK PANEL FOOTBOARD	1pc
11	MIDDLE PANEL FOOTBOARD	2pcs
12	INNER RIGHT SIDE FOOTBOARD	1pc

2x Drawer

STEP 52

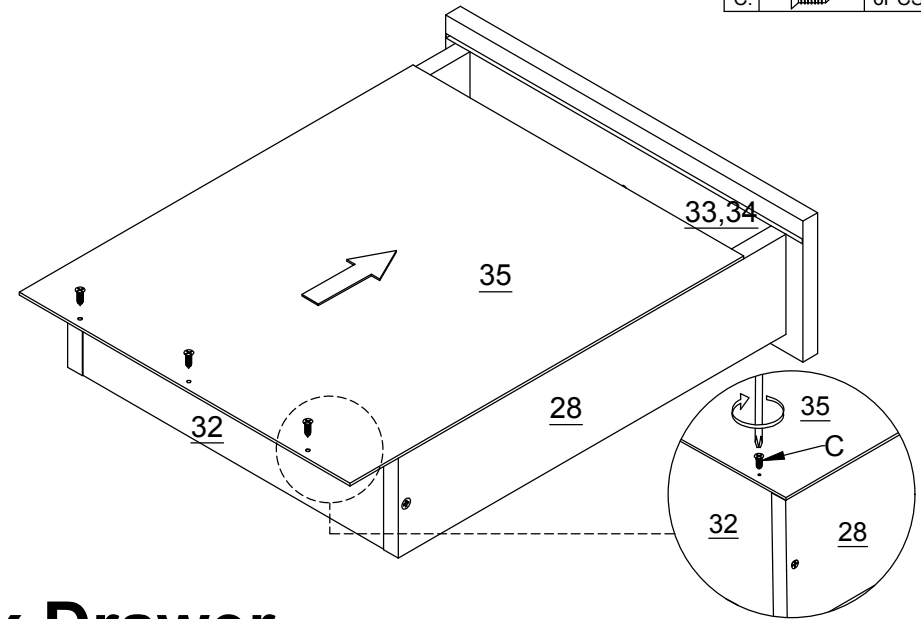
HARDWARE NEEDED:		
E.		12PCS



13	INNER LEFT SIDE FOOTBOARD	1pc
14	OUTER LEFT SIDE FOOTBOARD	1pc
15	OUTER RIGHT SIDE FOOTBOARD	1pc
16	SMALL PILLAR LEG_LEFT	1pc
17	SMALL PILLAR LEG_RIGHT	1pc
18	FOOTBOARD TOP CROSSBAR	1pc
19	HEABOARD & FOOTBOARD TOP PLINTH	2pcs
20	BOTTOM PANEL FOOTBOARD	1pc
21	CENTRE RAIL BED	1pc
22	LEFT SUPPORT BED	1pc
23	RIGHT SUPPORT BED	1pc
24	RIGHT SIDE RAIL PANEL	1pc
25	LEFT SIDE RAIL PANEL	1pc
26	LARGE DRAWER BACK	1pc
27	DRAWER SIDE_LEFT	3pcs
28	DRAWER SIDE_RIGHT	3pcs
29	LARGE DRAWER FRONT	1pc
30	LARGE DRAWER BASE	1pc
31	DRAWER BASE SUPPORT RAIL	1pc
32	SMALL DRAWER BACK	2pcs
33	SMALL DRAWER FRONT_LEFT	1pc
34	SMALL DRAWER FRONT_RIGHT	1pc
35	SMALL DRAWER BASE	2pcs
36	SUPPORT BED (I)	1set
37	SUPPORT BED (II)	1set



STEP 49

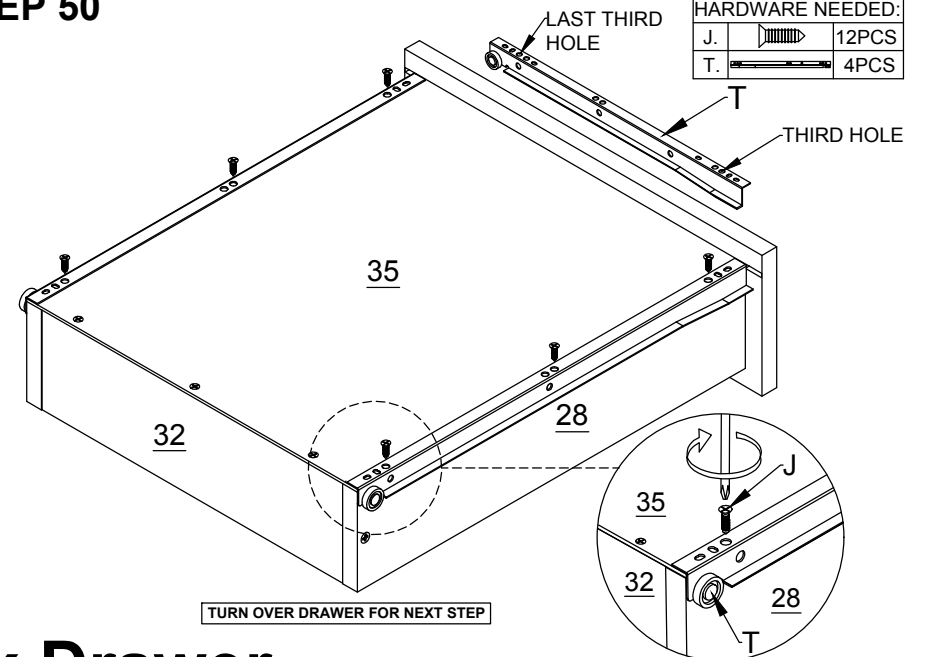
HARDWARE NEEDED:		
C.		6PCS



2x Drawer

STEP 50

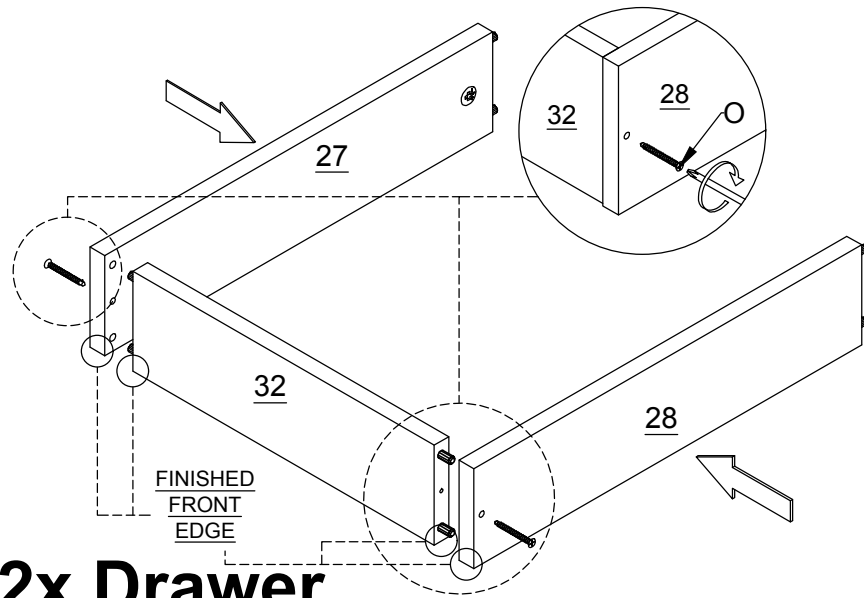
HARDWARE NEEDED:		
J.		12PCS
T.		4PCS



2x Drawer

STEP 47

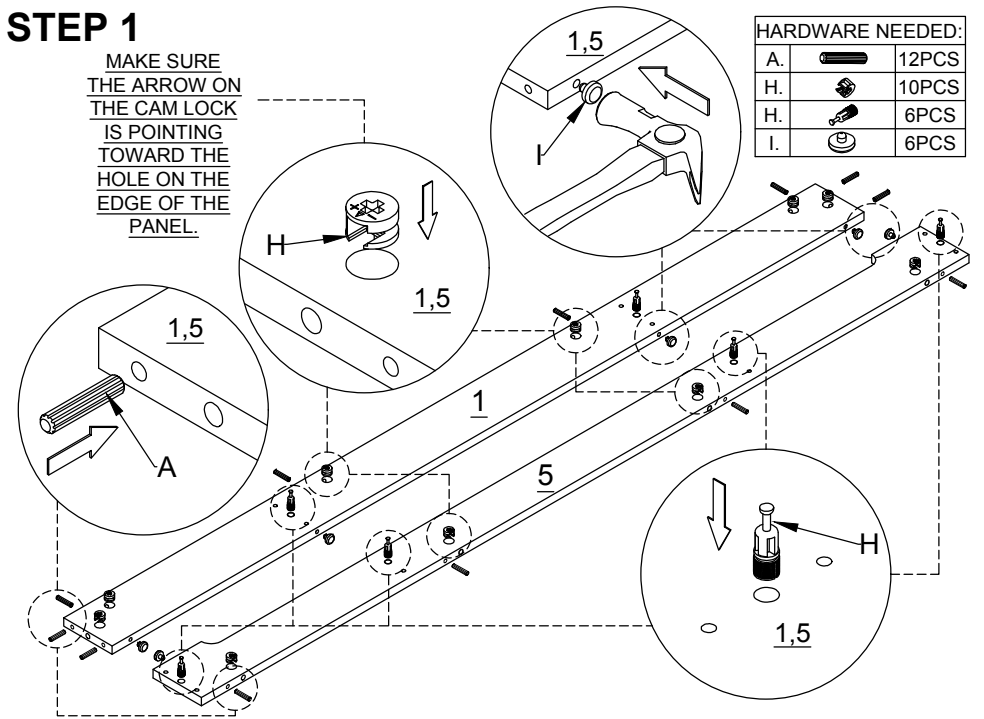
HARDWARE NEEDED:		
O.		4PCS



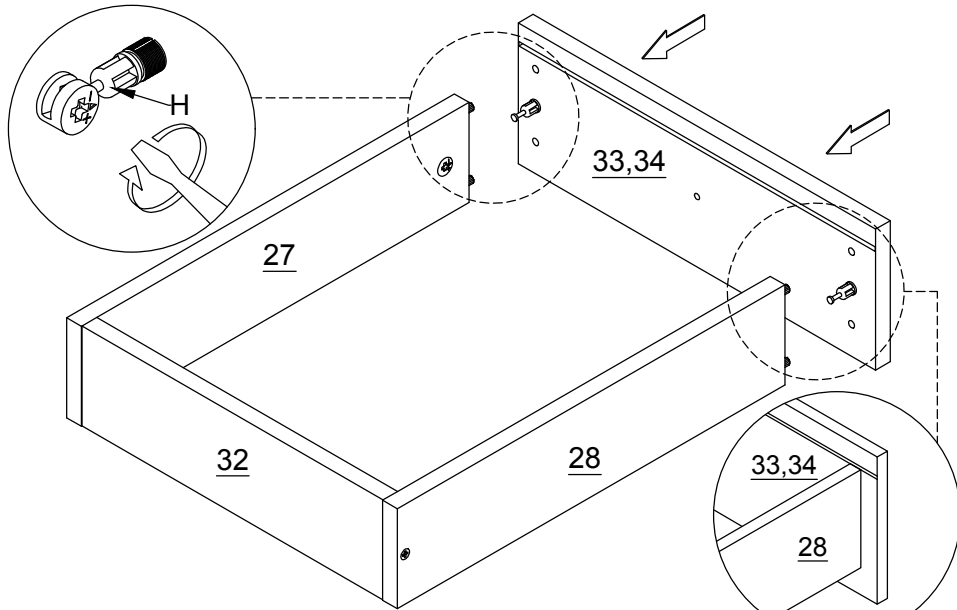
STEP 1

MAKE SURE THE ARROW ON THE CAM LOCK IS POINTING TOWARD THE HOLE ON THE EDGE OF THE PANEL.

HARDWARE NEEDED:		
A.		12PCS
H.		10PCS
H.		6PCS
I.		6PCS



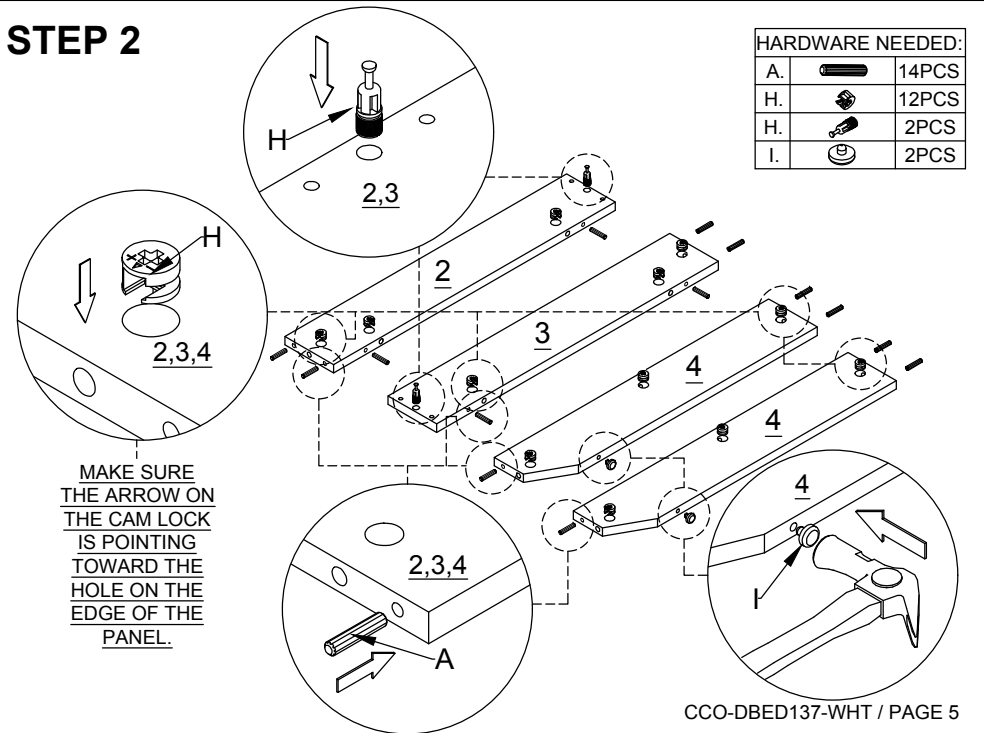
STEP 48



STEP 2

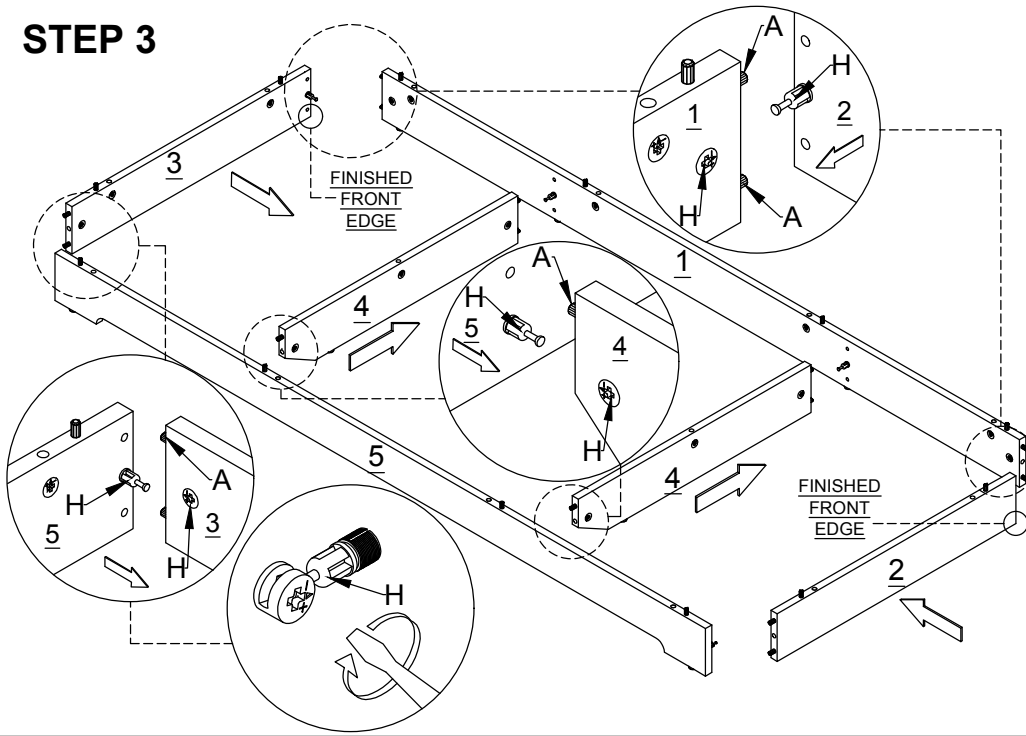
MAKE SURE THE ARROW ON THE CAM LOCK IS POINTING TOWARD THE HOLE ON THE EDGE OF THE PANEL.

HARDWARE NEEDED:		
A.		14PCS
H.		12PCS
H.		2PCS
I.		2PCS

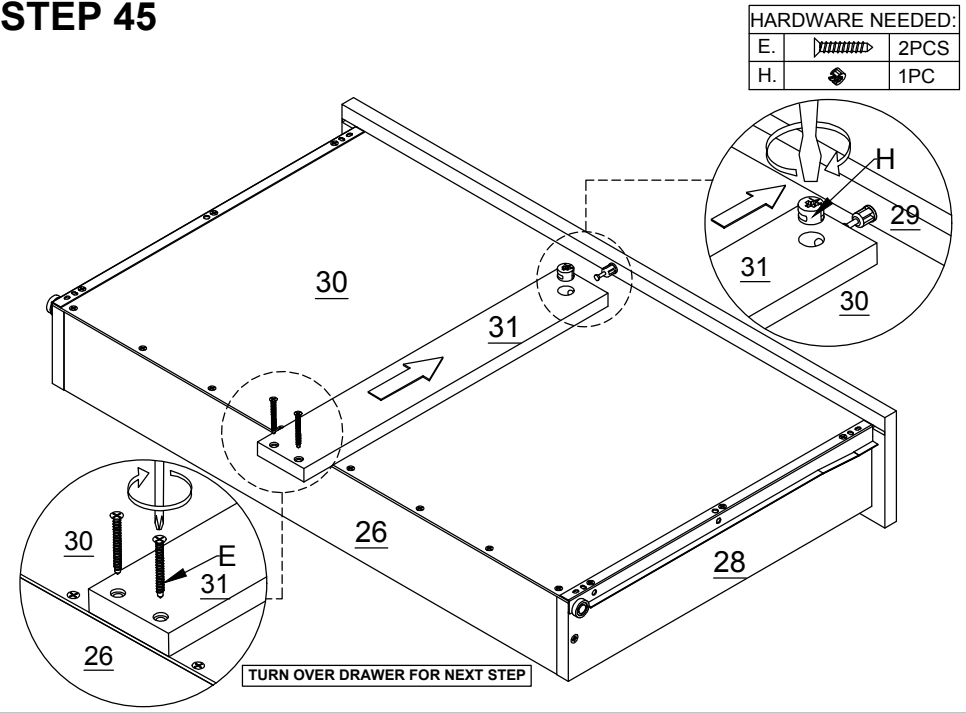


2x Drawer

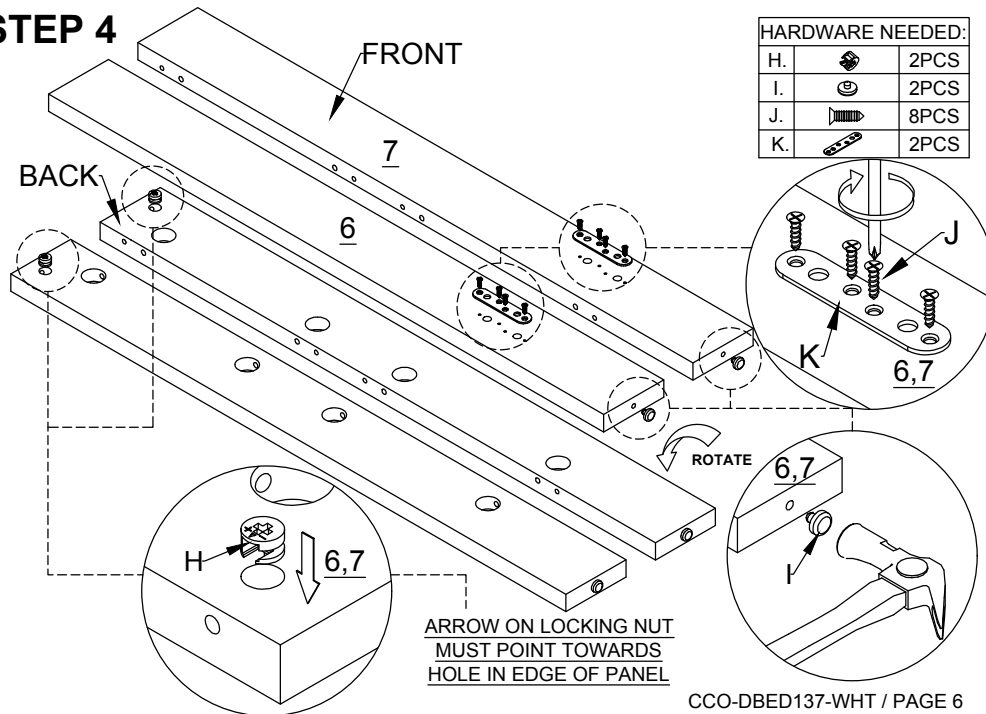
STEP 3



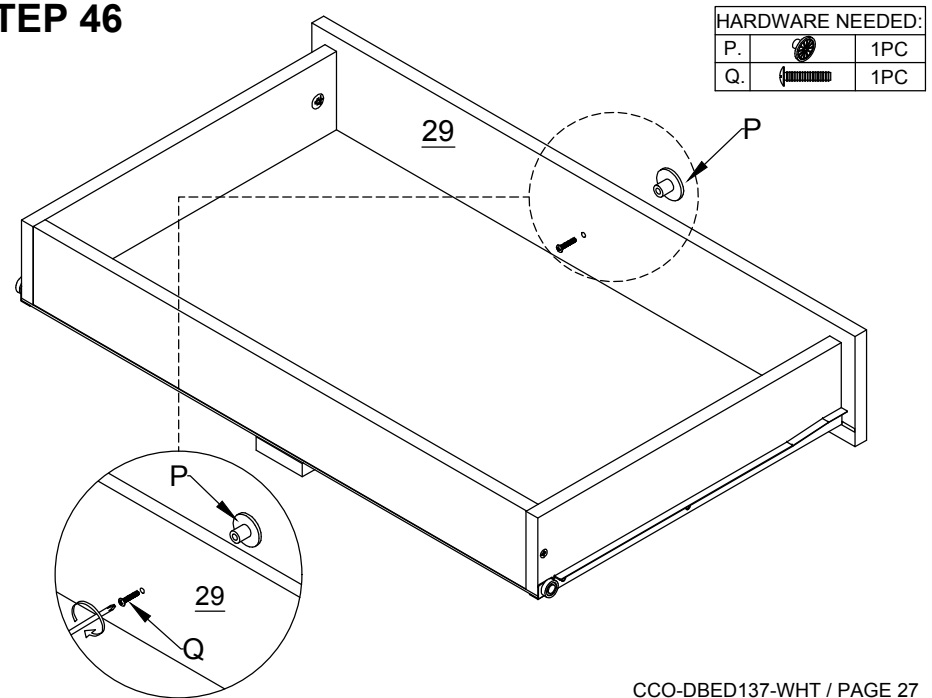
STEP 45



STEP 4

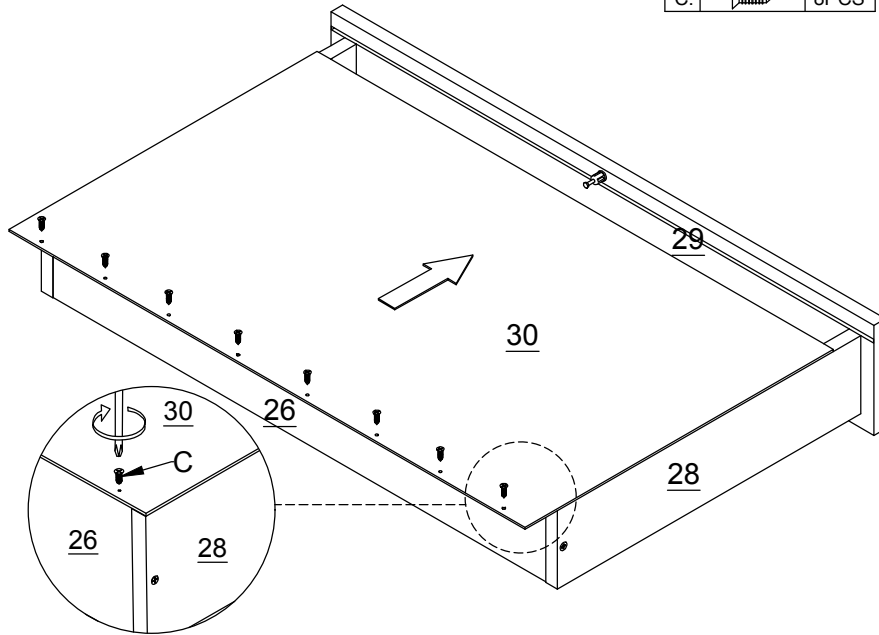


STEP 46





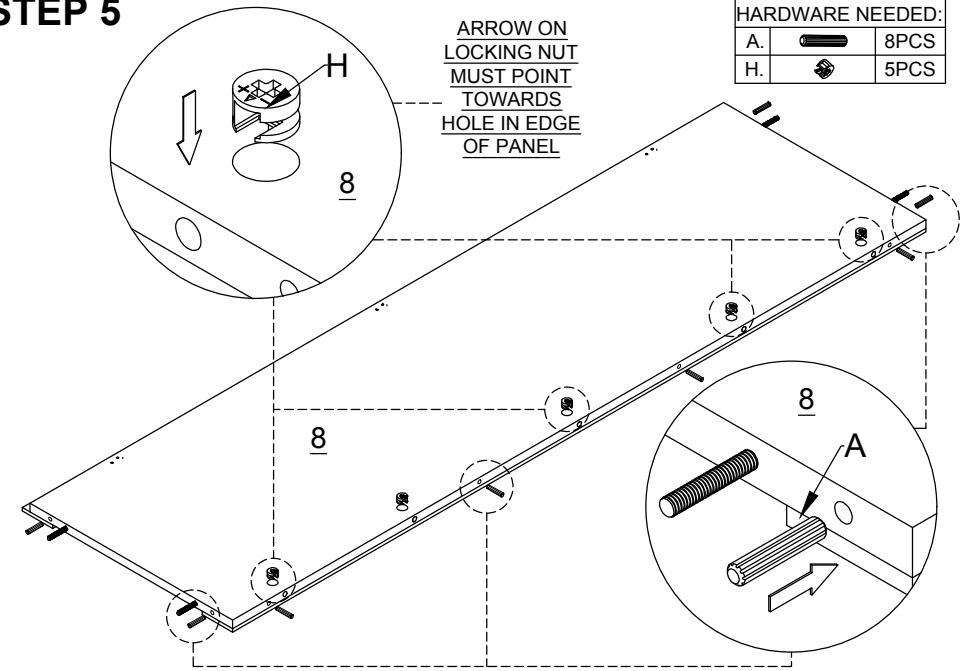
STEP 43

HARDWARE NEEDED:		
C.		8PCS





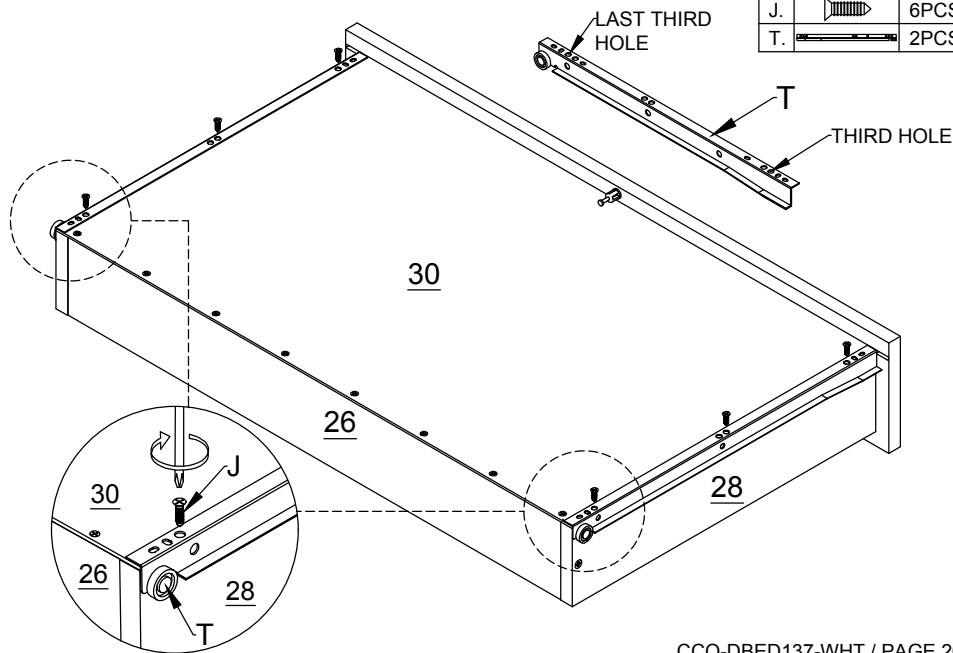
STEP 5

HARDWARE NEEDED:		
A.		8PCS
H.		5PCS



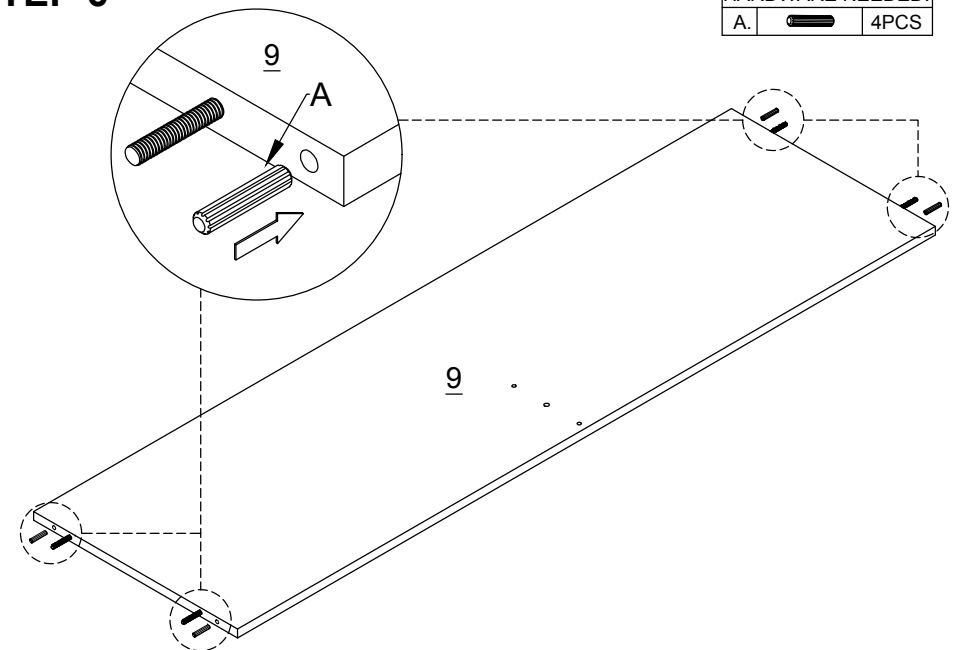
STEP 44

HARDWARE NEEDED:		
J.		6PCS
T.		2PCS



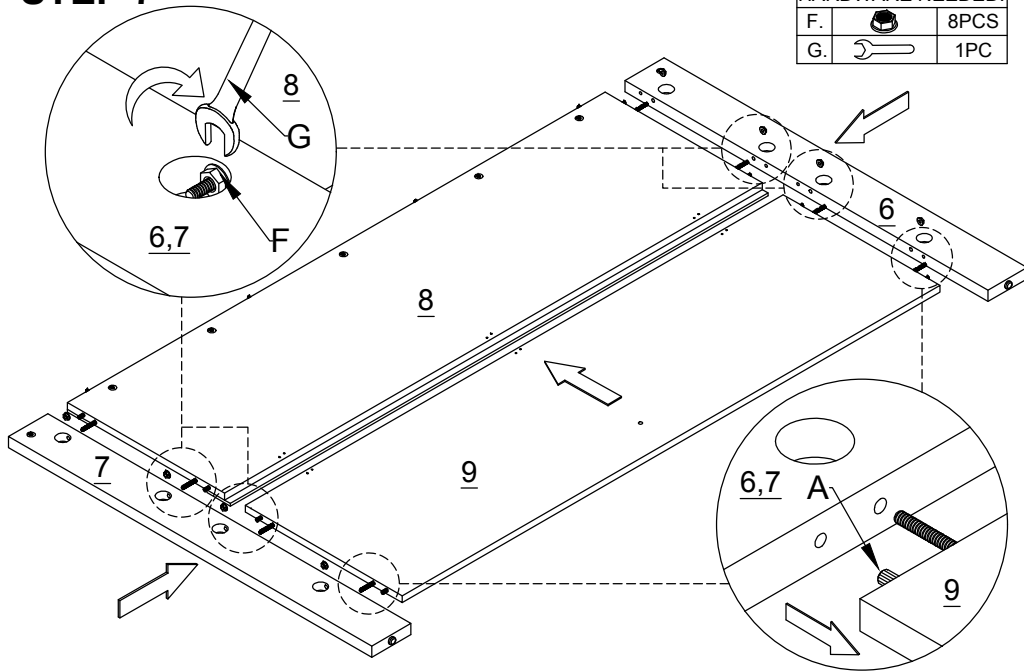
STEP 6

HARDWARE NEEDED:		
A.		4PCS



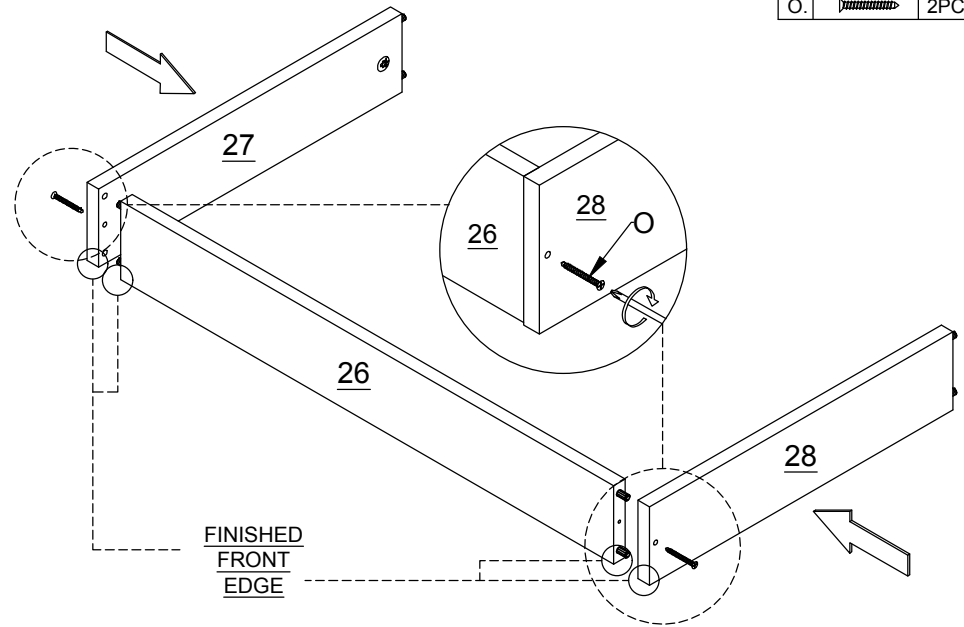
STEP 7

HARDWARE NEEDED:		
F.		8PCS
G.		1PC






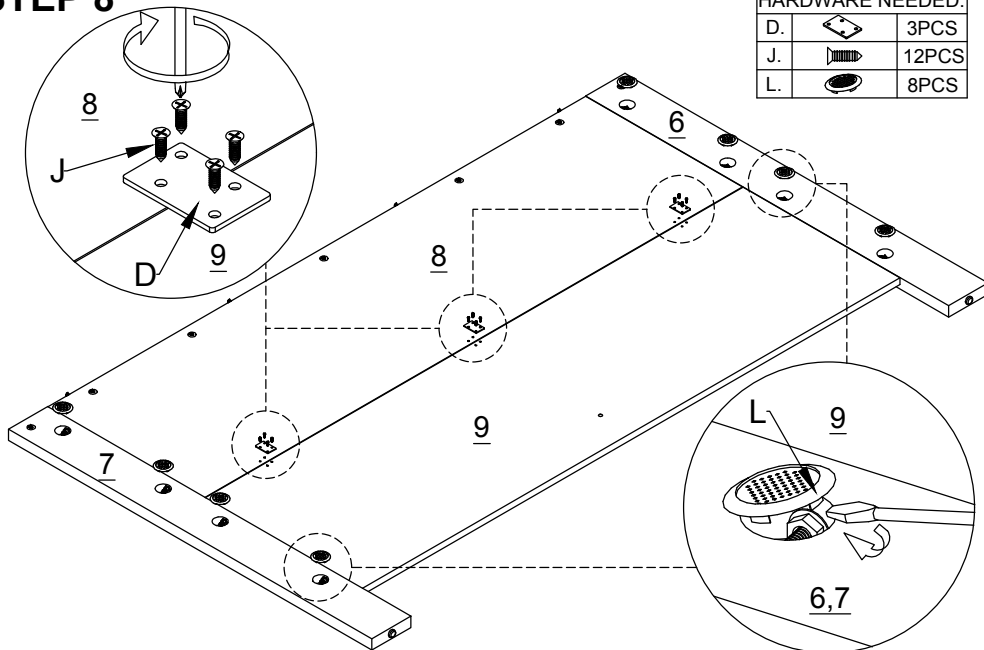
STEP 41

HARDWARE NEEDED:		
O.		2PCS

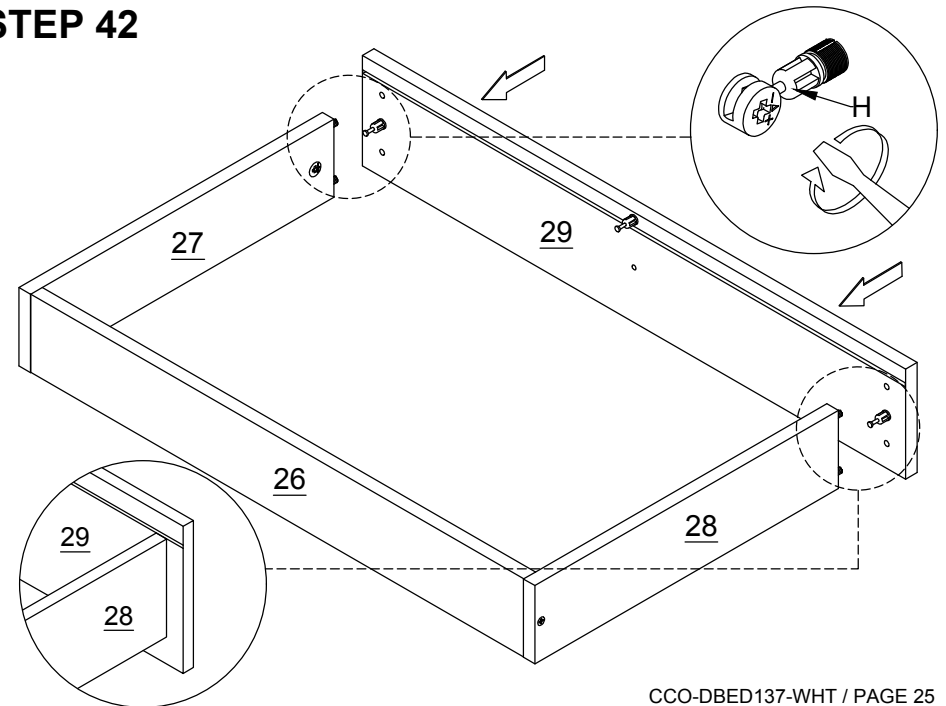


STEP 8

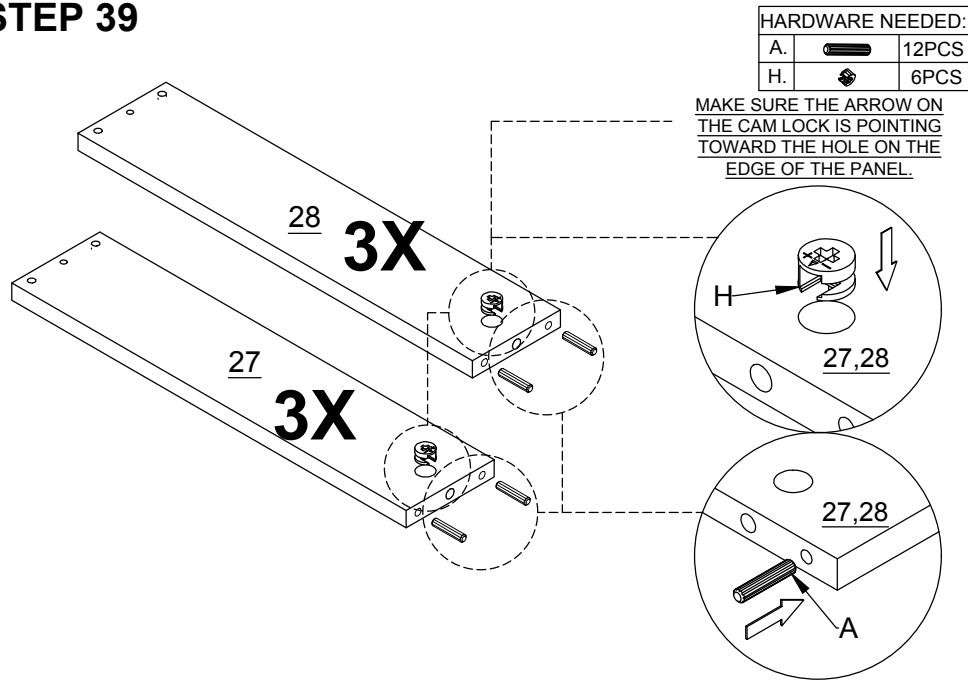
HARDWARE NEEDED:		
D.		3PCS
J.		12PCS
L.		8PCS



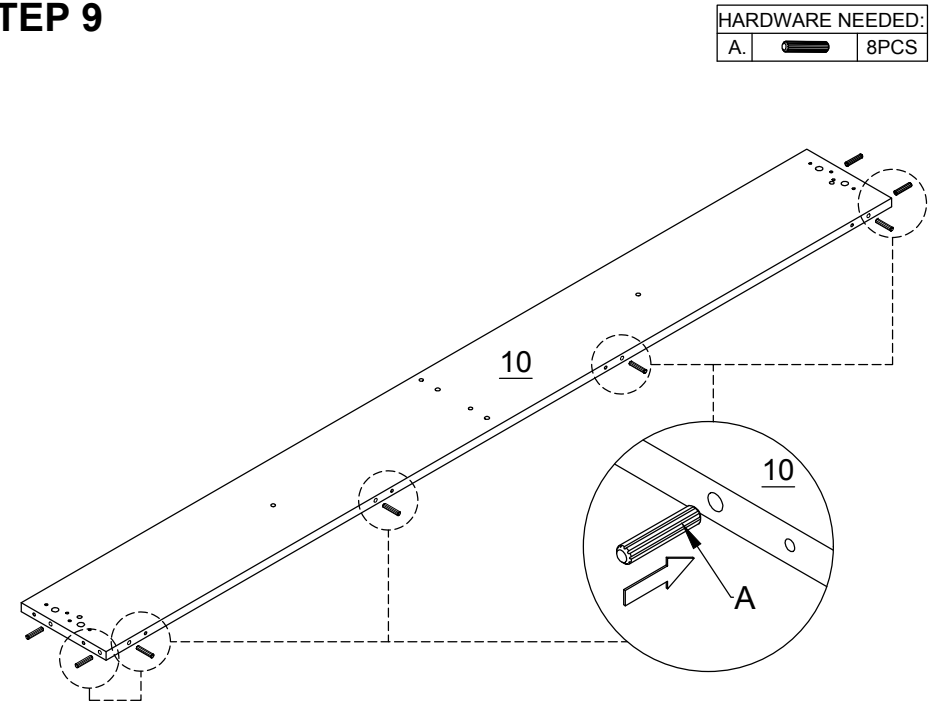
STEP 42



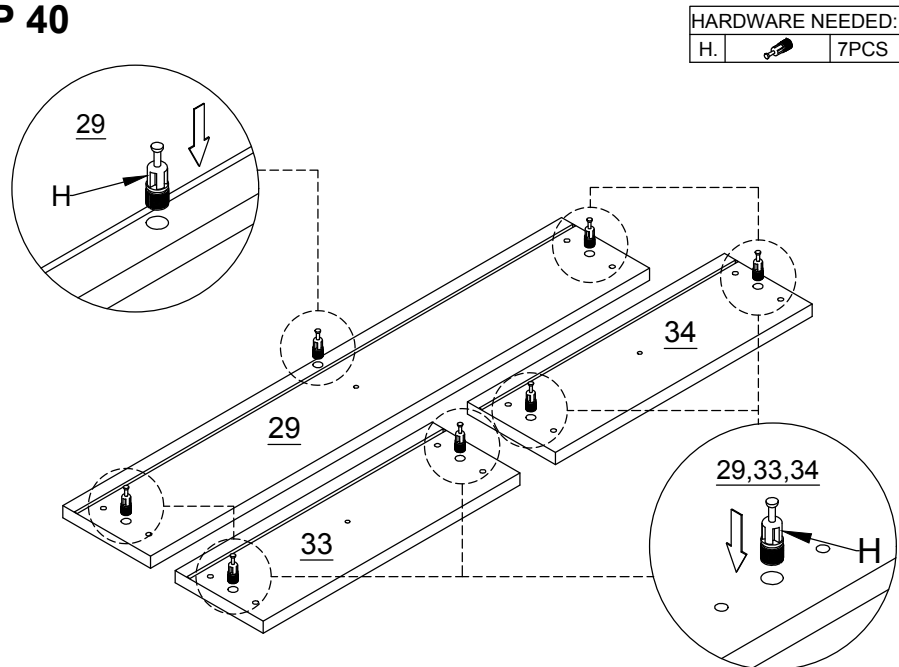
STEP 39



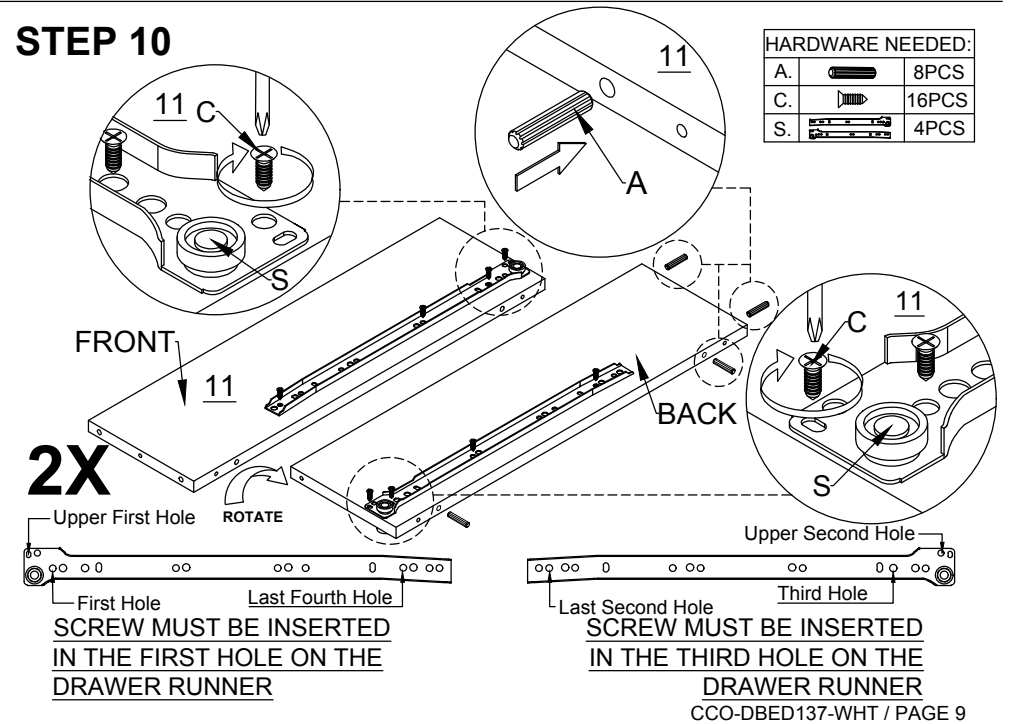
STEP 9



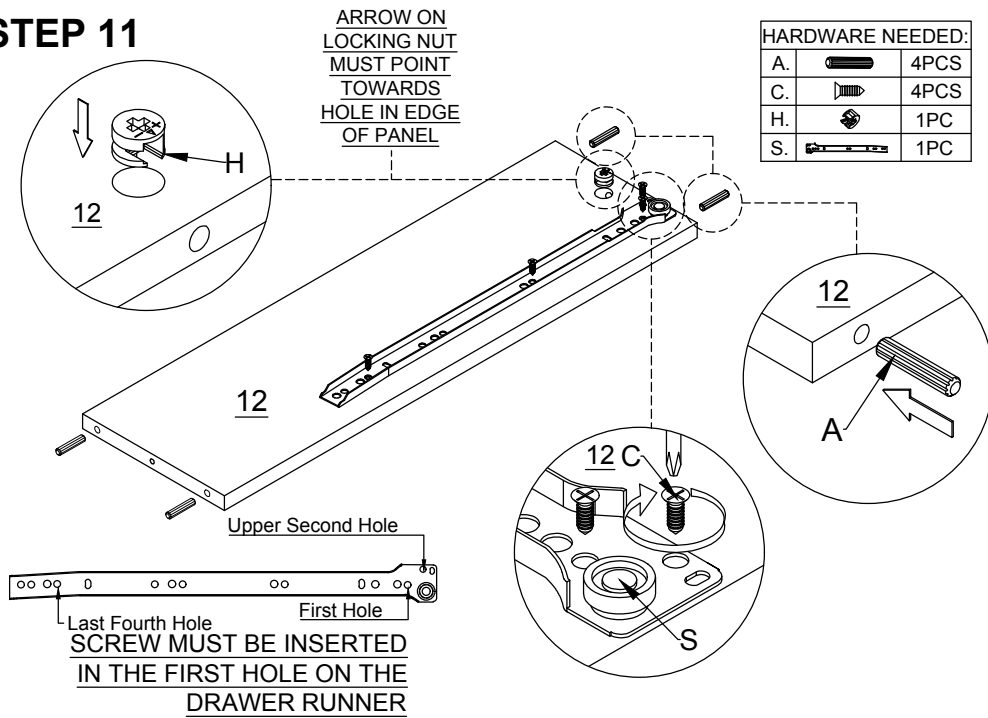
STEP 40



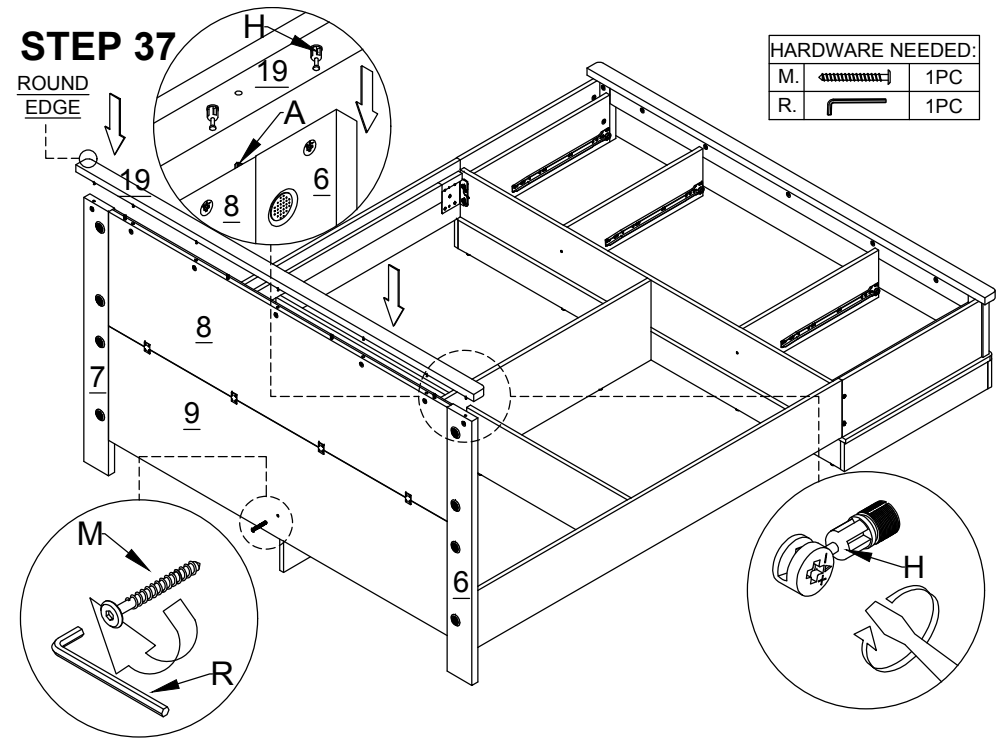
STEP 10



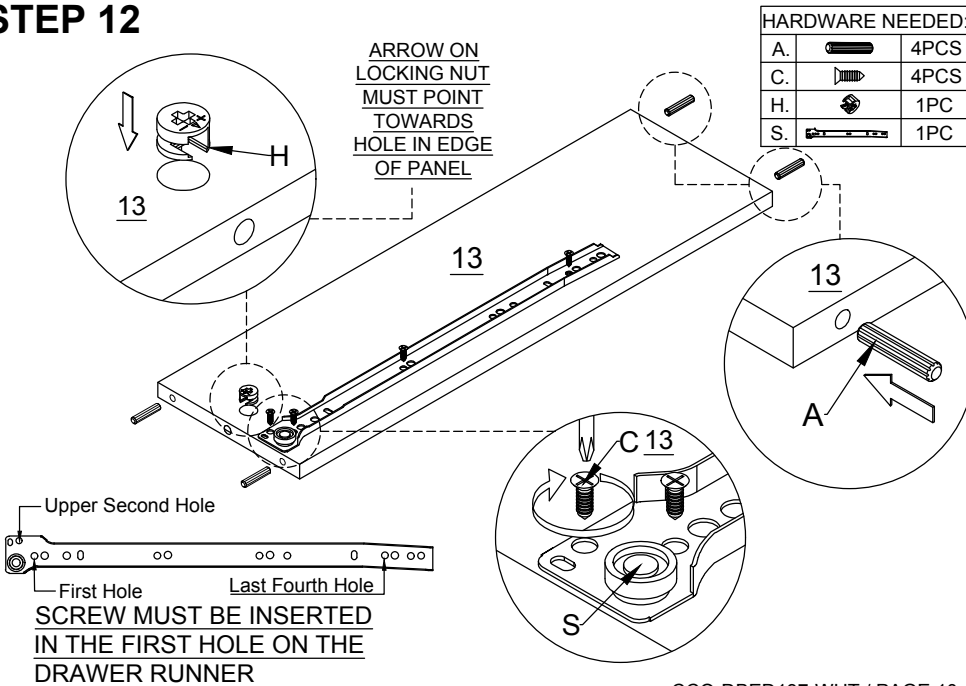
STEP 11



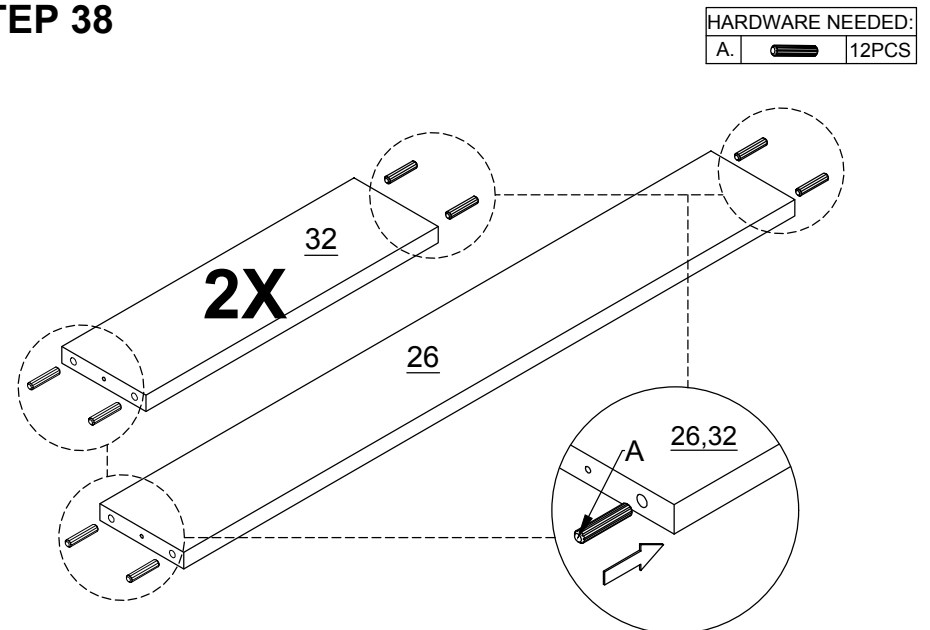
STEP 37



STEP 12

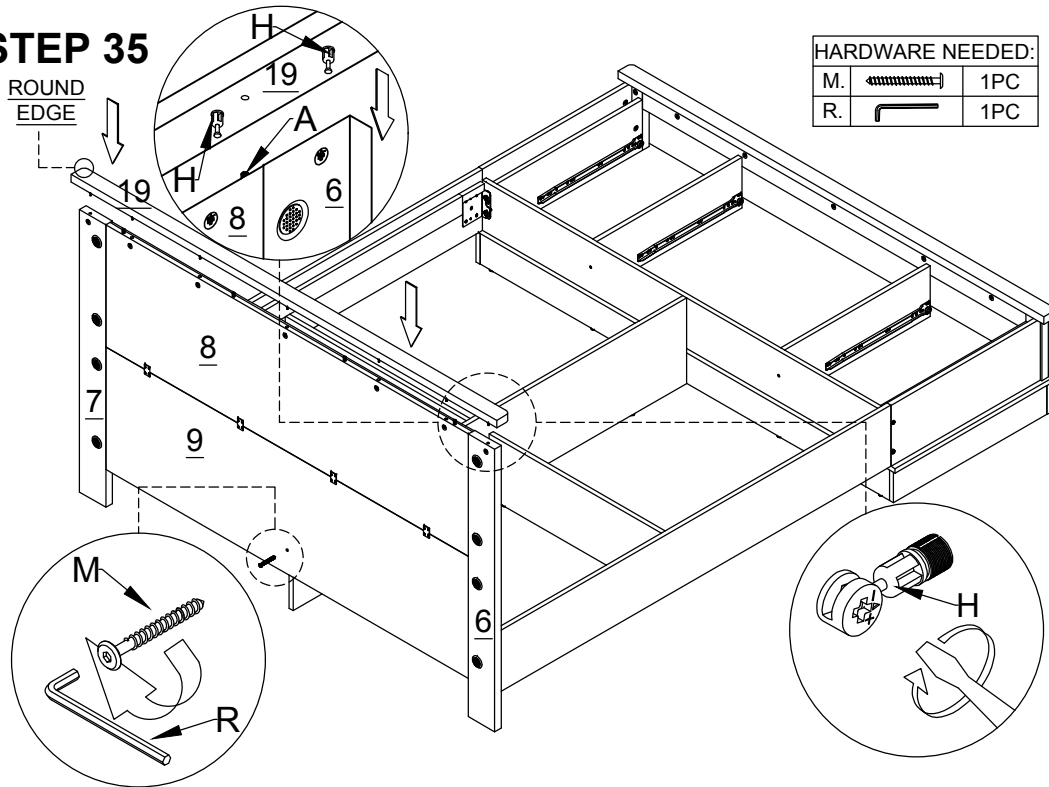


STEP 38



STEP 35

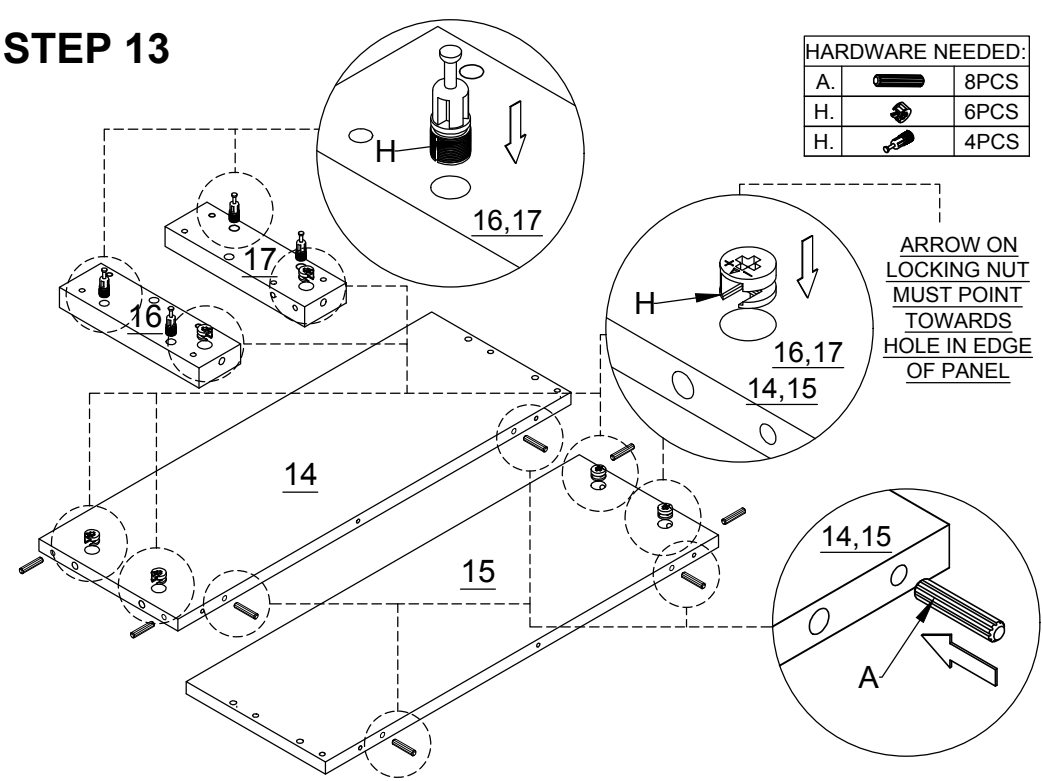
ROUND
EDGE



HARDWARE NEEDED:

M.		1PC
R.		1PC

STEP 13

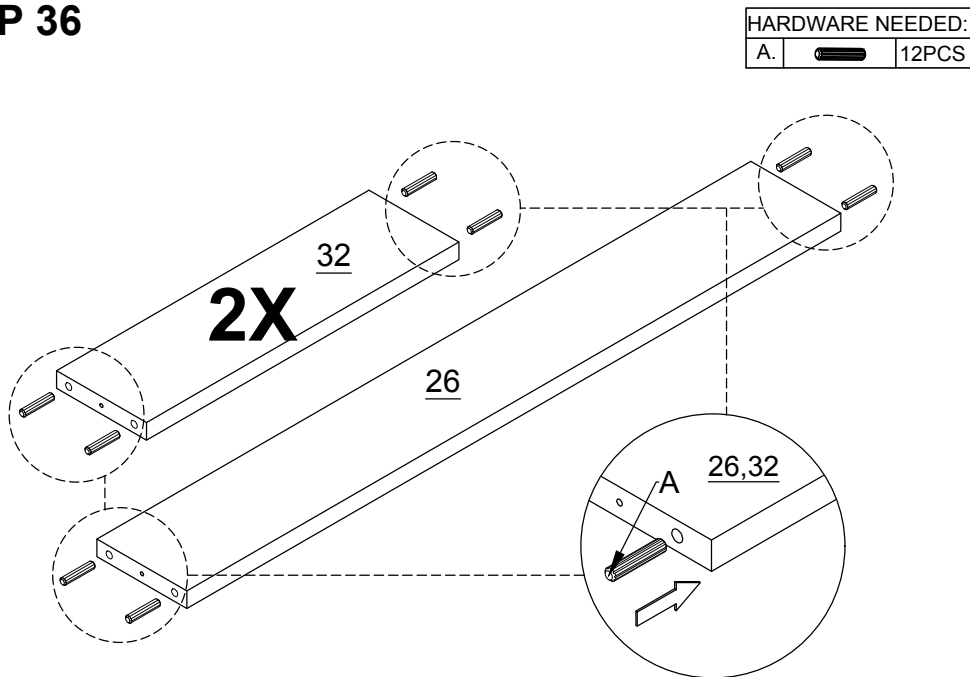


HARDWARE NEEDED:

A.		8PCS
H.		6PCS
H.		4PCS

ARROW ON
LOCKING NUT
MUST POINT
TOWARDS
HOLE IN EDGE
OF PANEL

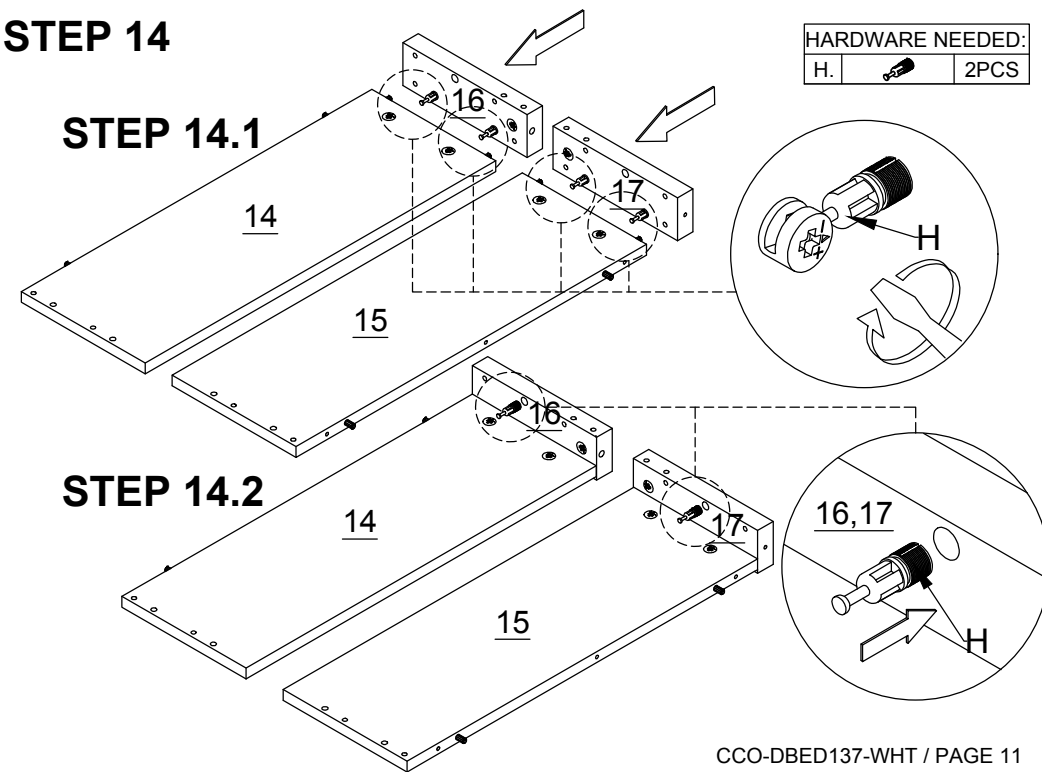
STEP 36



HARDWARE NEEDED:

A.		12PCS
----	--	-------

STEP 14



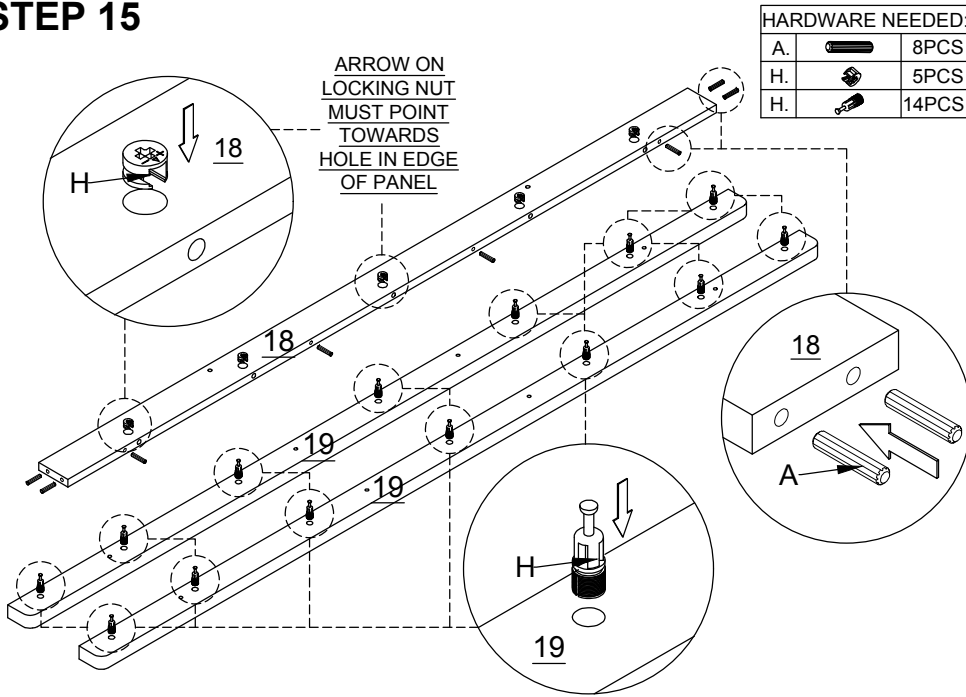
HARDWARE NEEDED:

H.		2PCS
----	--	------

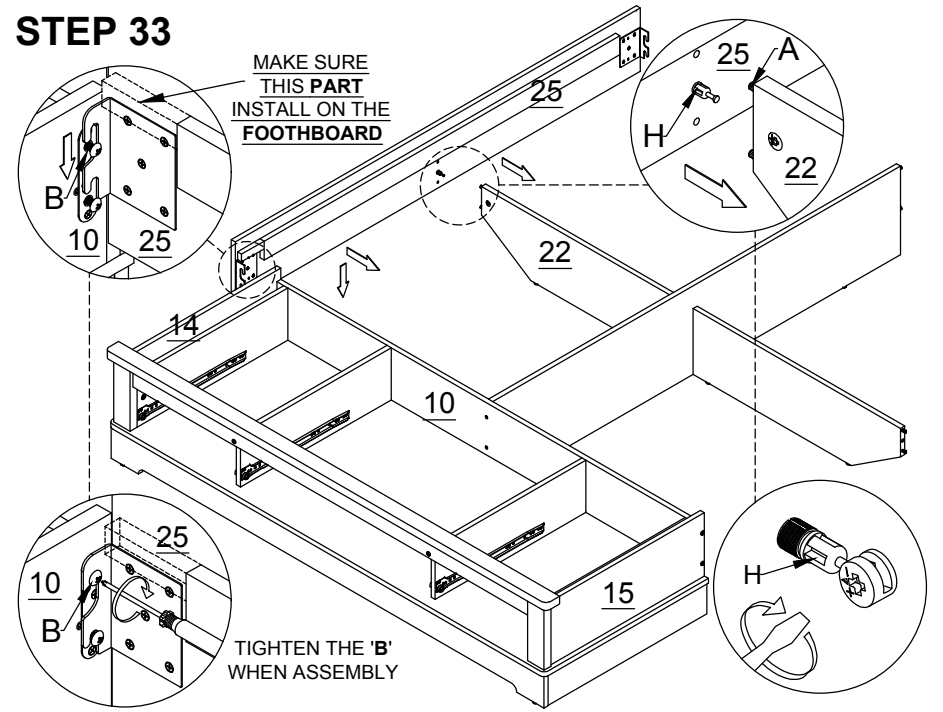
STEP 14.1

STEP 14.2

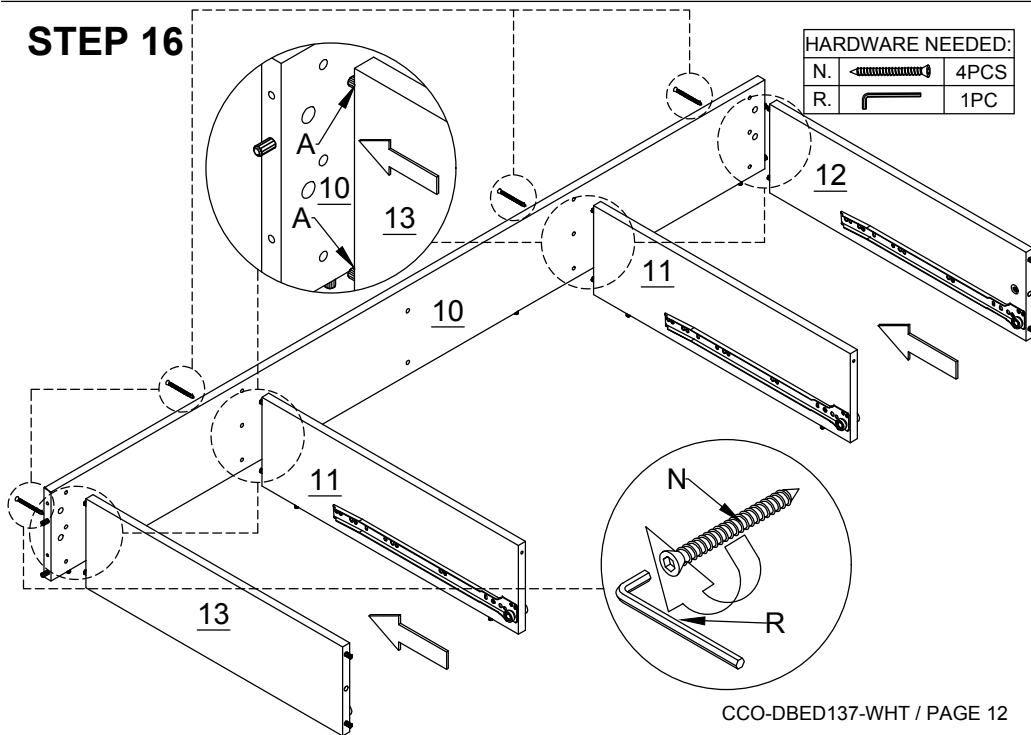
STEP 15



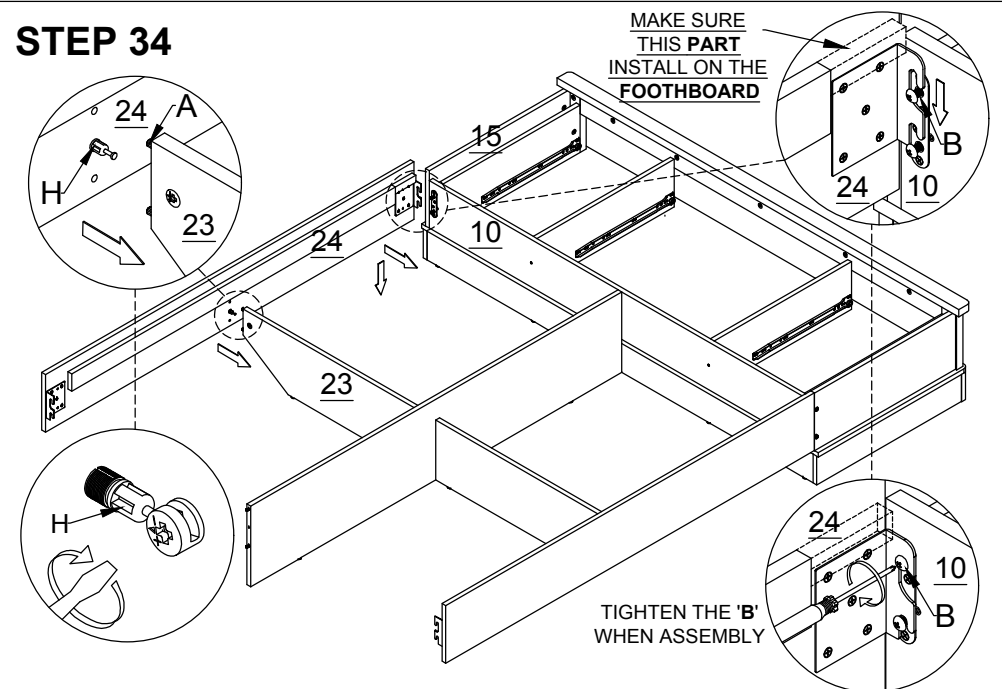
STEP 33



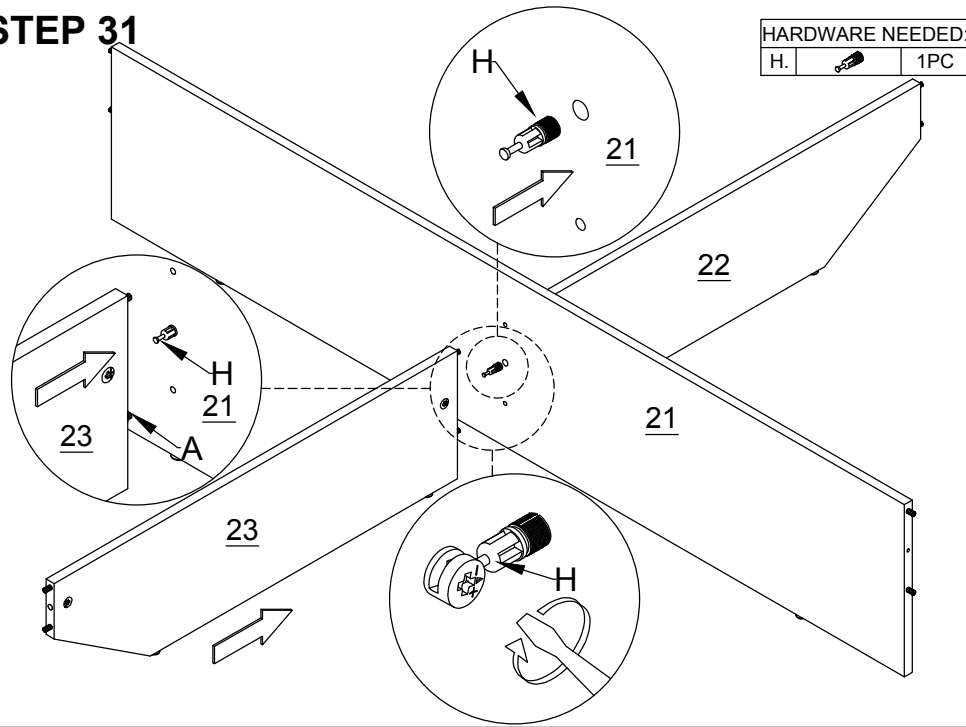
STEP 16



STEP 34



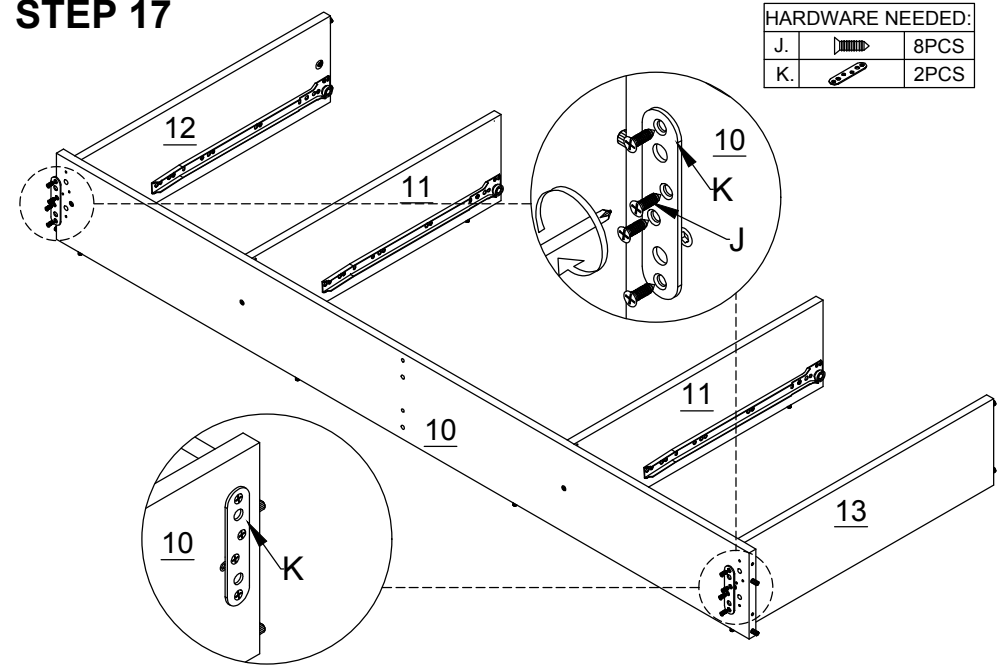
STEP 31



HARDWARE NEEDED:

H.		1PC
----	--	-----

STEP 17

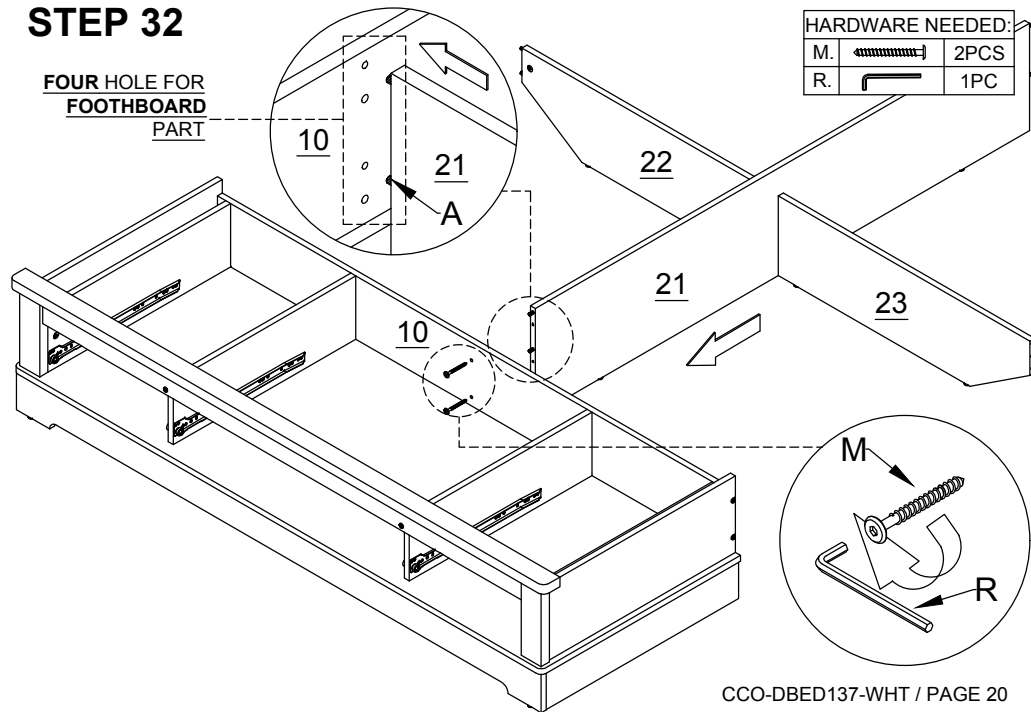


HARDWARE NEEDED:

J.		8PCS
K.		2PCS

STEP 32

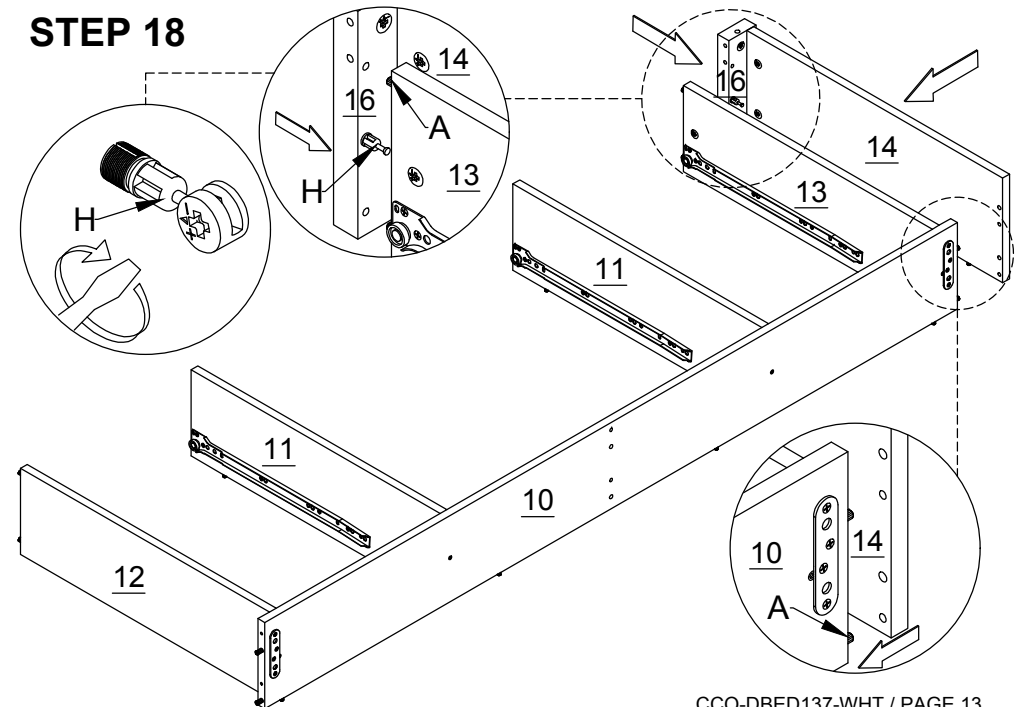
FOUR HOLE FOR
FOOTHBOARD
PART



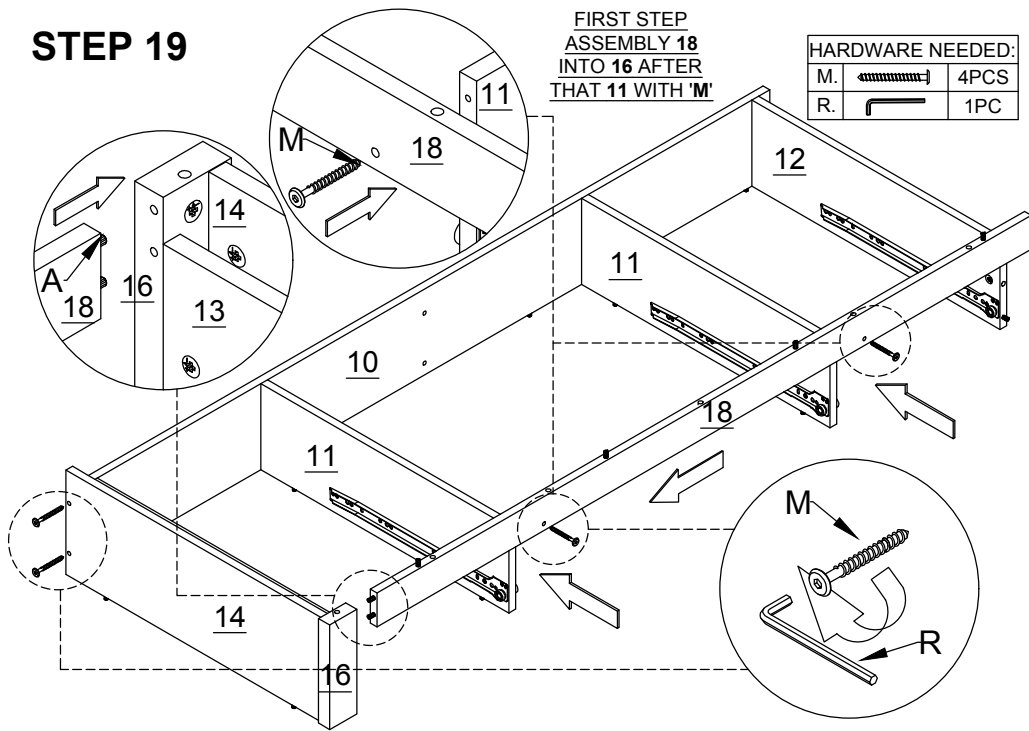
HARDWARE NEEDED:

M.		2PCS
R.		1PC

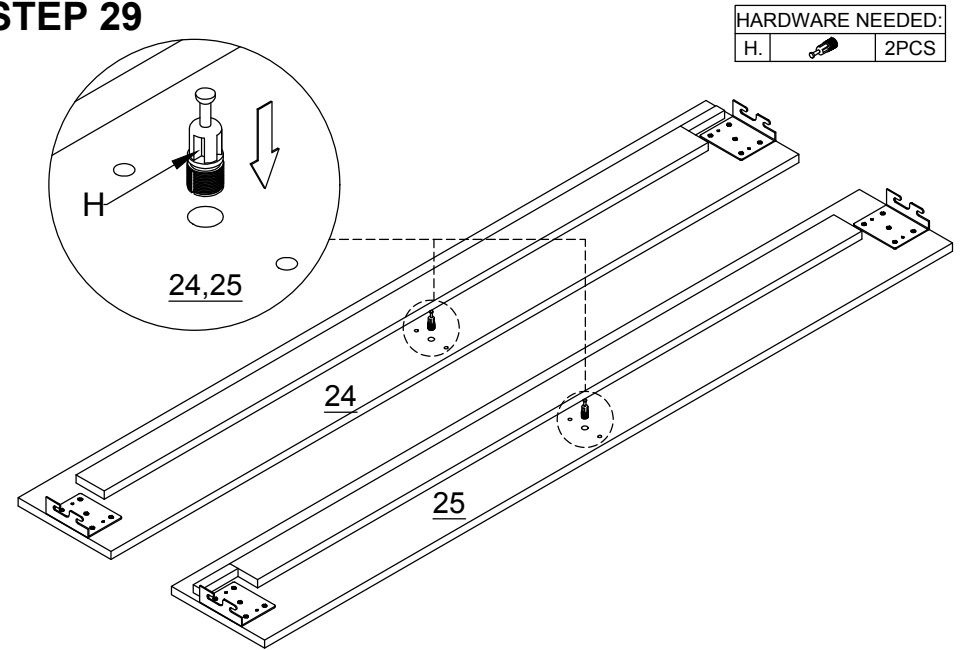
STEP 18



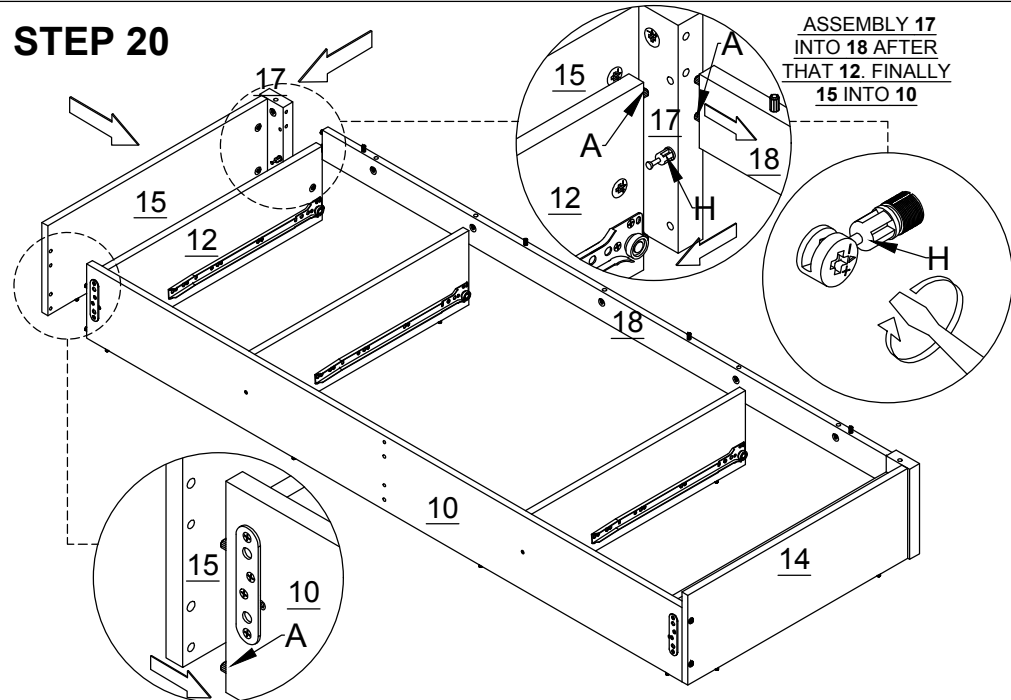
STEP 19



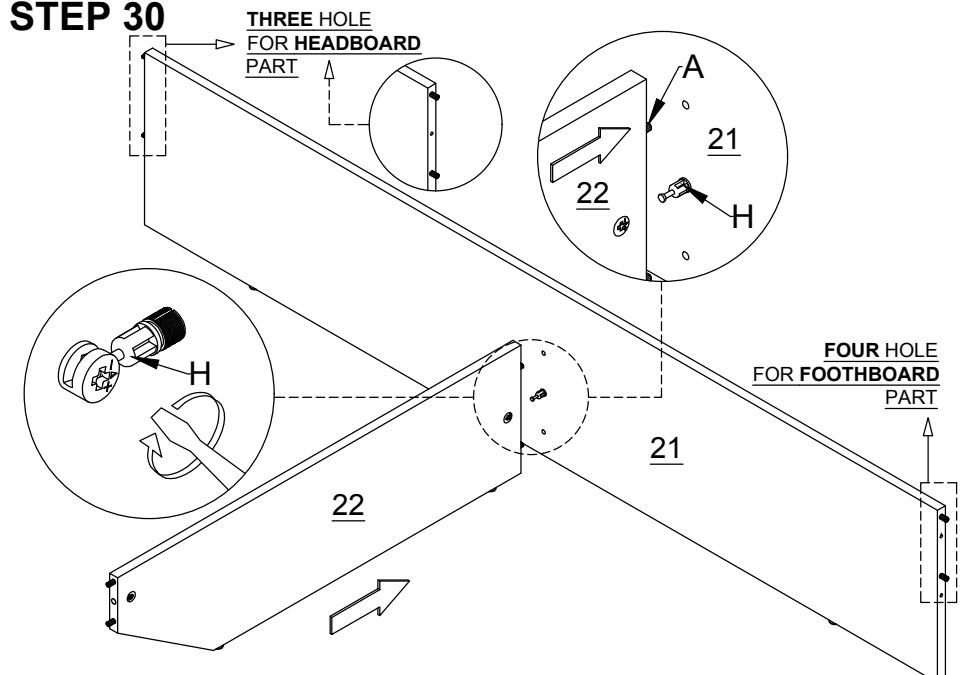
STEP 29



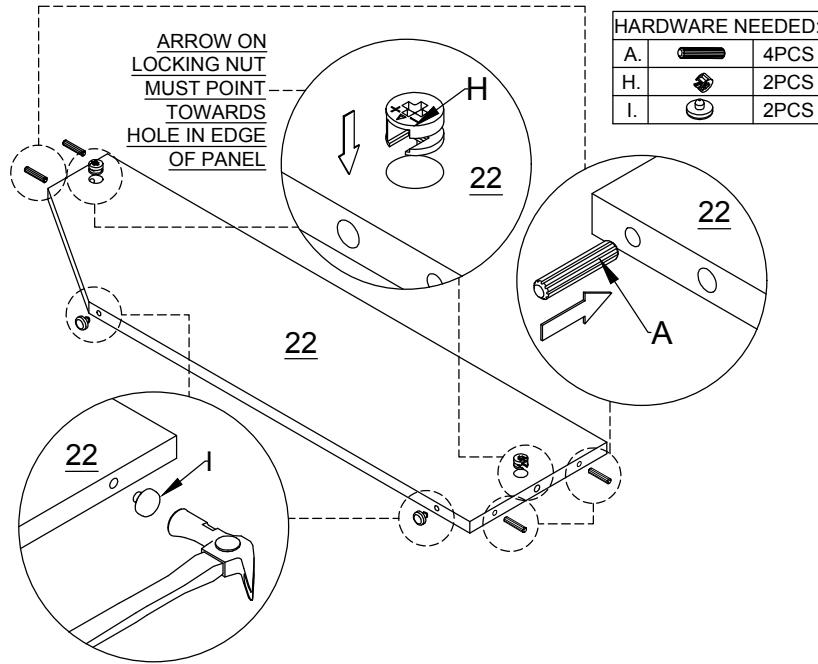
STEP 20



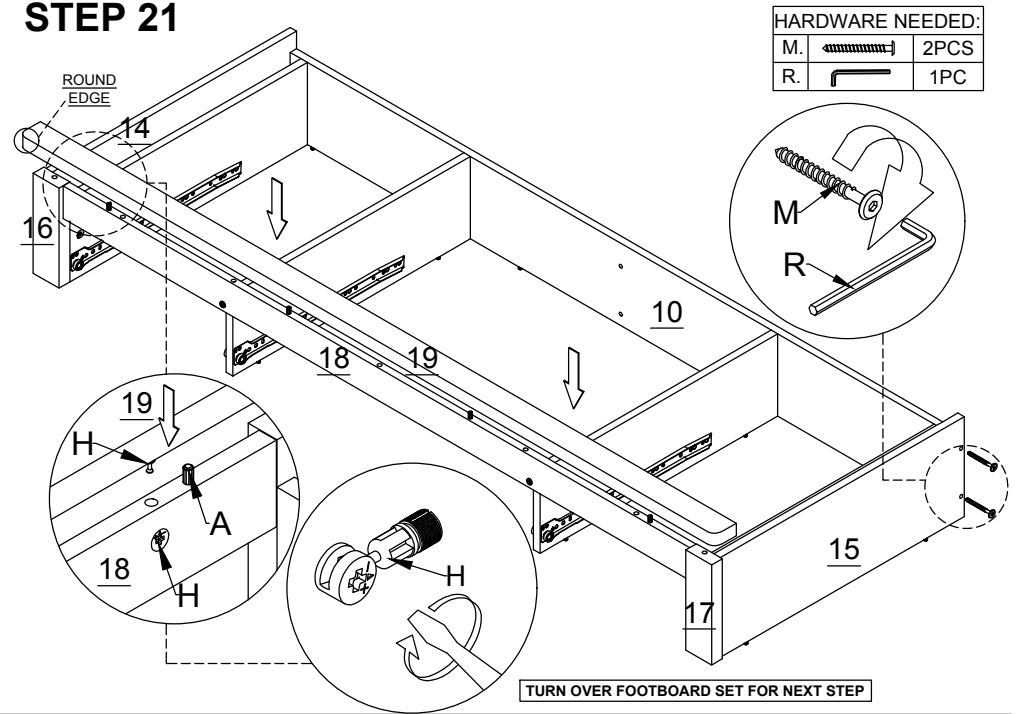
STEP 30



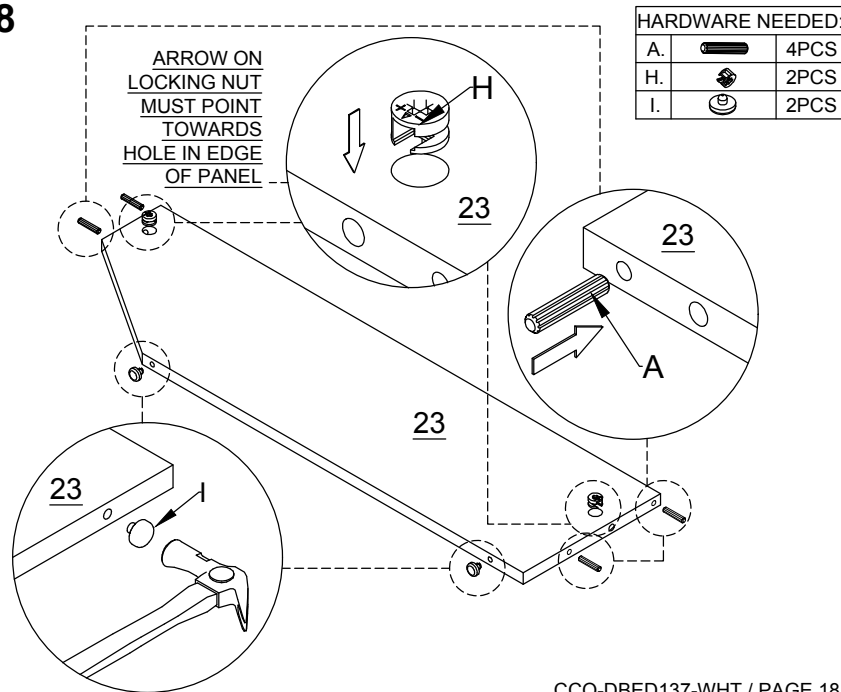
STEP 27



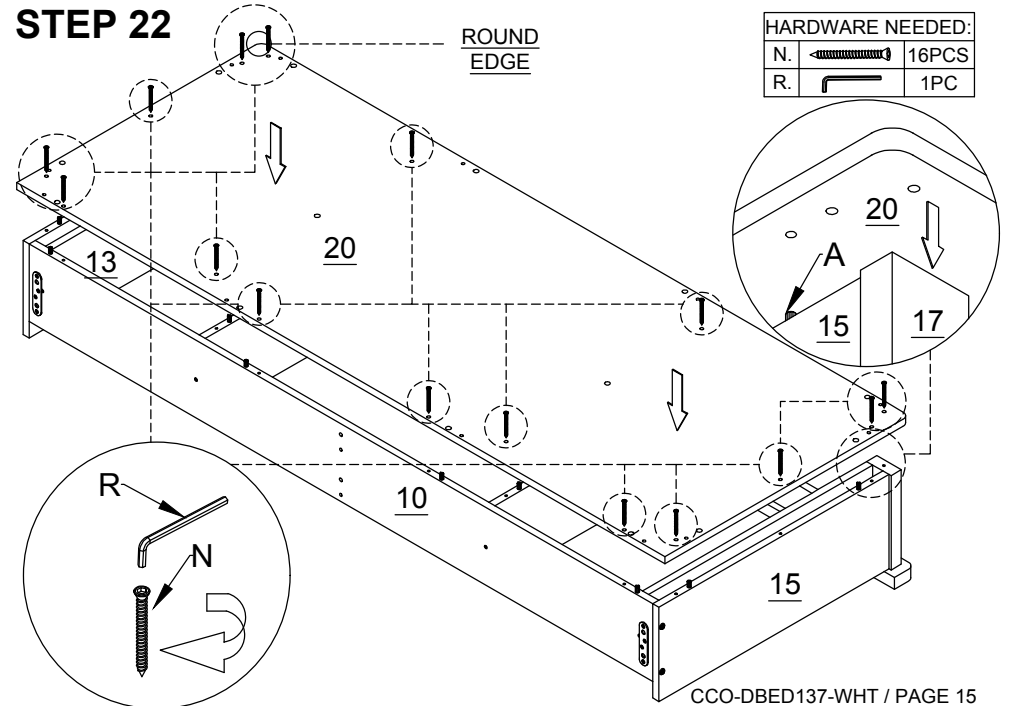
STEP 21



STEP 28

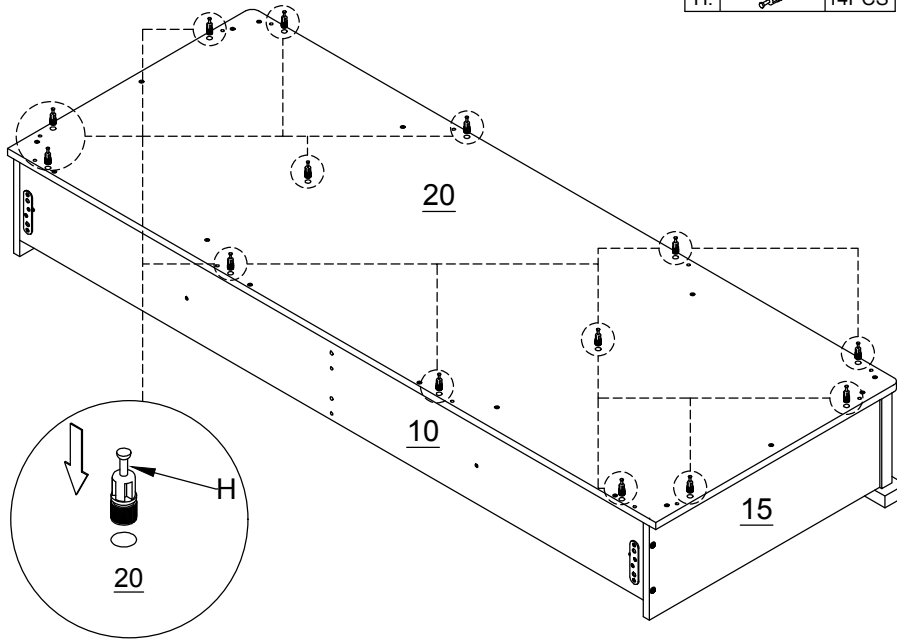


STEP 22



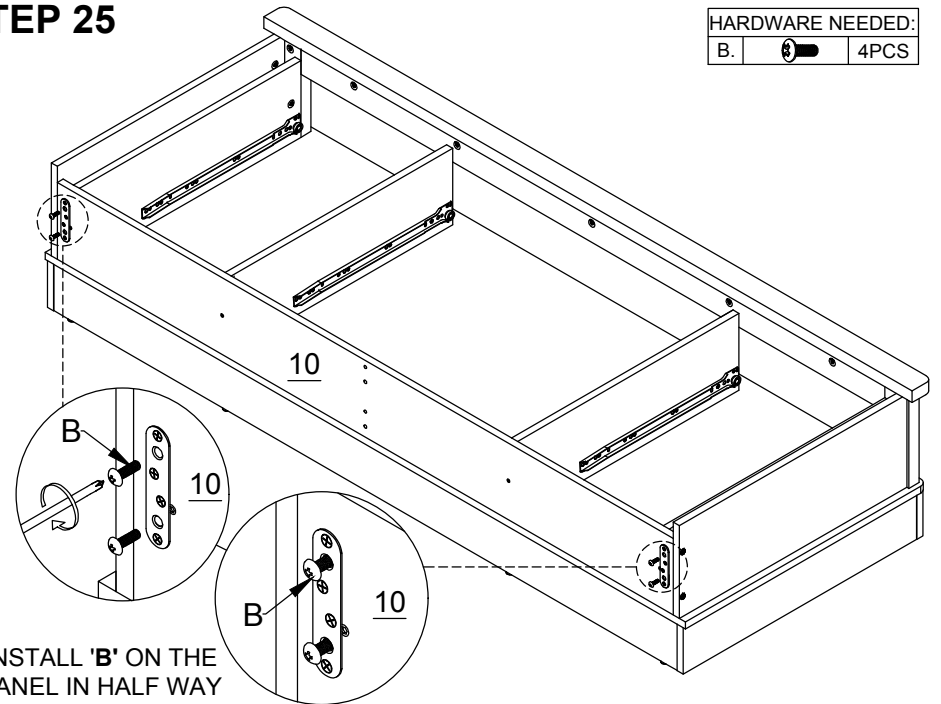
STEP 23

HARDWARE NEEDED:
H.  14PCS



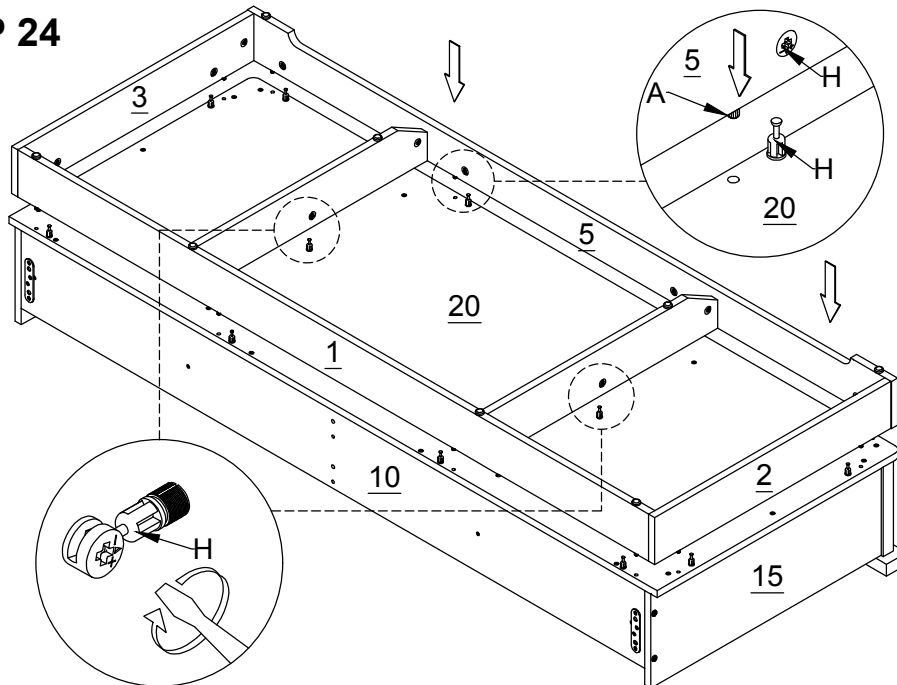
STEP 25

HARDWARE NEEDED:
B.  4PCS






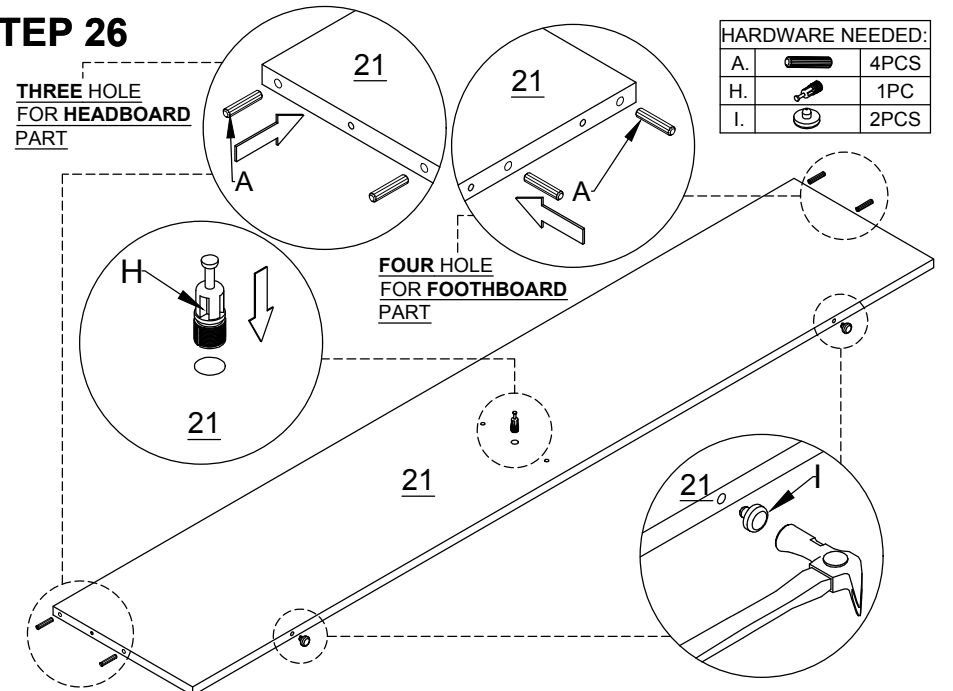
INSTALL 'B' ON THE
PANEL IN HALF WAY

STEP 24



STEP 26

HARDWARE NEEDED:
A.  4PCS
H.  1PC
I.  2PCS



THREE HOLE
FOR HEADBOARD
PART

FOUR HOLE
FOR FOOTBOARD
PART