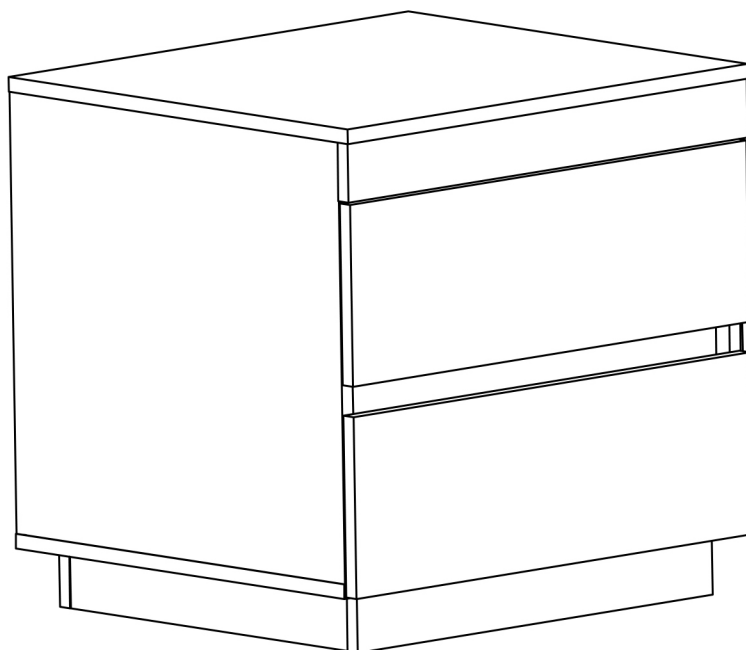


Assembly Instructions

Cuppa Series



Lifely*

Product Name
CPA-V2-BT603-WOK

Cuppa Bedside Table

Dimensions(Wx DxH)
500x500x540mm

Important

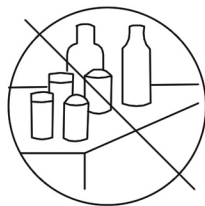
Please read through instruction carefully
Before assembly and keep for future reference.

For our full catalogue of assembly instructions,
Visit: lifely.com.au/assembly.

Important Tips and Maintenance



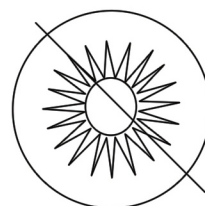
1.
Keep children and animals away from working area as smaller parts may cause choking if swallowed.



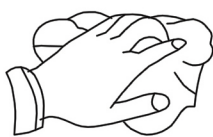
2.
Never place liquids or anything damp upon furniture as it will mark. Ensure a coaster or running is beneath.



3.
Never use ammonia based cleaning products as it will damage the finish.



4.
To avoid fading, keep furniture out of direct sunlight.



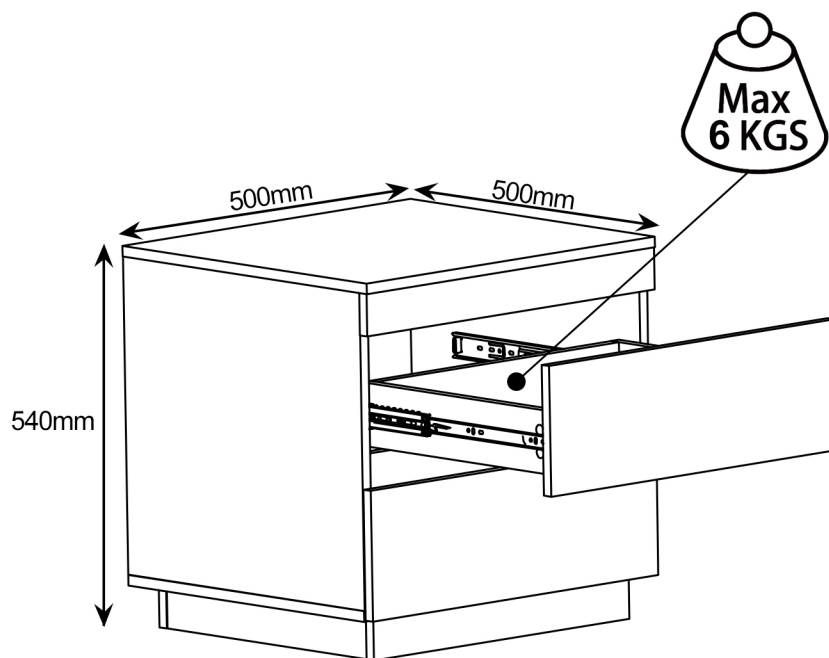
5.
Use a soft or damp cloth(dry cloth)when wiping or cleaning surfaces.



6.
Two person are required.



7.
Lay a soft matt down to protect the furniture piece before and during assembly.



So your relationship is strong. But is it flat-pack furniture strong? Unless you're an aerospace engineer, assembling furniture can be slightly stressful. We recommend meditating quietly, pouring yourself a herbal tea (or slightly less herbal wine) and tackling things one step at a time. If you feel a passive aggressive remark coming on, try a compliment instead. E.g. "You're so good looking".

This 19-Step assembly should take around 45 minutes with an Allen Key-or 30 minutes with an electric drill. Godspeed.

Designed for everyday

Component Hardware

Please check you have all the fittings
part or tools are listed in below.

No. A
Quantity: 8Pcs
Dowel



No. B
Quantity: 42Pcs
Cam Bolt



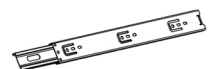
No. C
Quantity: 42Pcs
Cam Nut



No. D
Quantity: 24Pcs
Screw M3.5*14mm



No. E
Quantity: 4Pcs
Guide



No. F
Quantity: 8Pcs
Back Plate Clamp



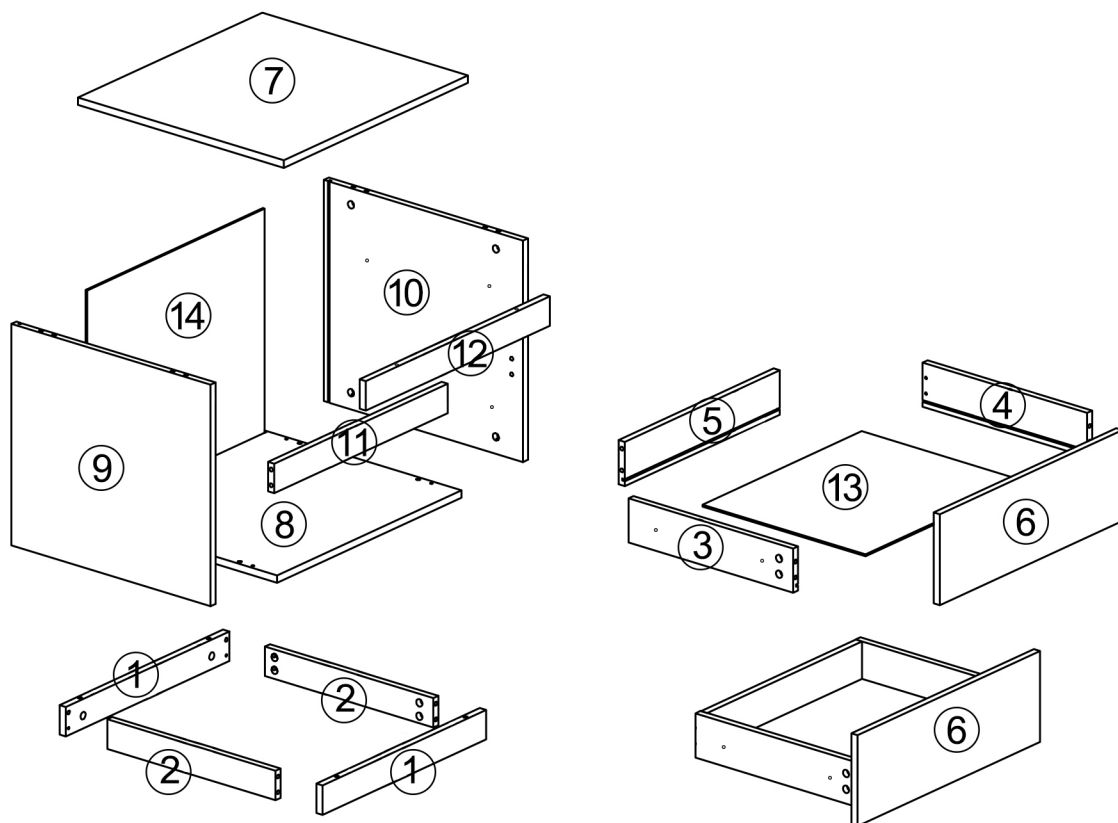
No. G
Quantity: 1Pc
Allen Key



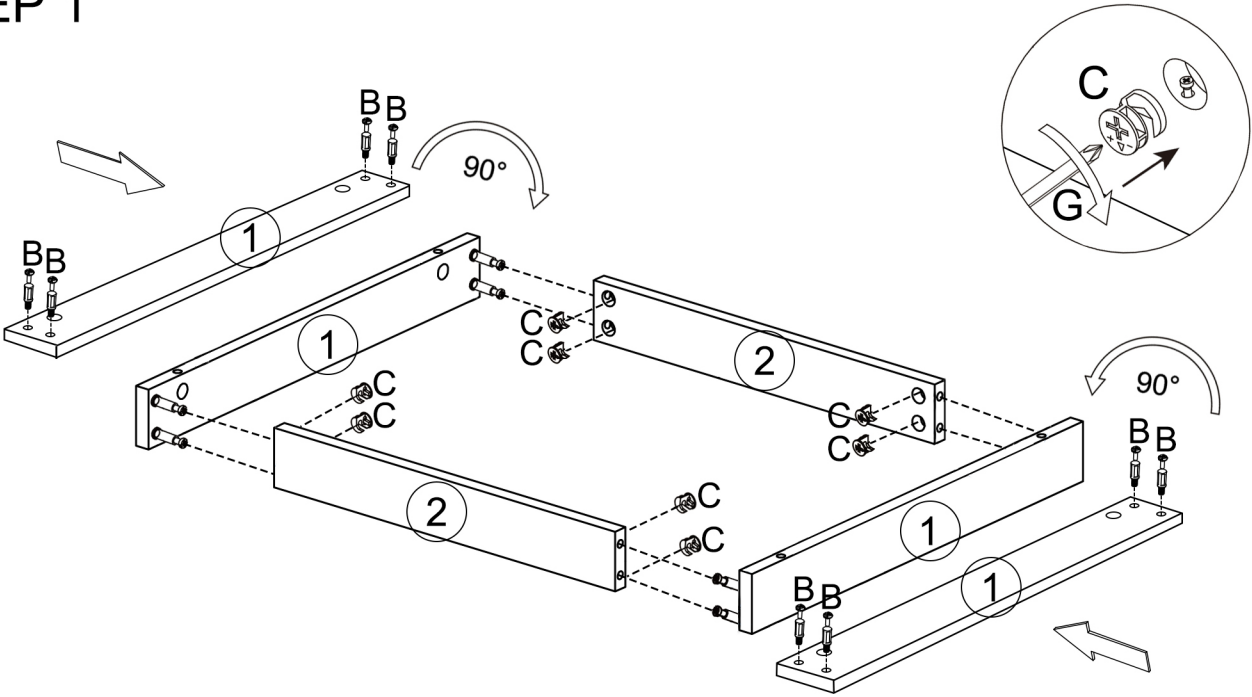
Component Panels & part List

Please check you have all the panels
are listed below.

- | | | | | |
|-----|-----------------|-------|----|------------|
| 1. | BASE | ----- | x2 | Carton 1/1 |
| 2. | BASE SIDE | ----- | x2 | Carton 1/1 |
| 3. | DRAWER SIDE - L | ----- | x2 | Carton 1/1 |
| 4. | DRAWER SIDE - R | ----- | x2 | Carton 1/1 |
| 5. | DRAWER BACK | ----- | x1 | Carton 1/1 |
| 6. | DRAWER FRONT | ----- | x1 | Carton 1/1 |
| 7. | TOP PANEL | ----- | x1 | Carton 1/1 |
| 8. | BOTTOM PANEL | ----- | x1 | Carton 1/1 |
| 9. | SIDE PANEL - L | ----- | x1 | Carton 1/1 |
| 10. | SIDE PANEL - R | ----- | x1 | Carton 1/1 |
| 11. | FRONT PANEL | ----- | x1 | Carton 1/1 |
| 12. | SKIRT PANEL | ----- | x1 | Carton 1/1 |
| 13. | DRAWERR BASE | ----- | x2 | Carton 1/1 |
| 14. | BACK PANEL | ----- | x1 | Carton 1/1 |



STEP 1

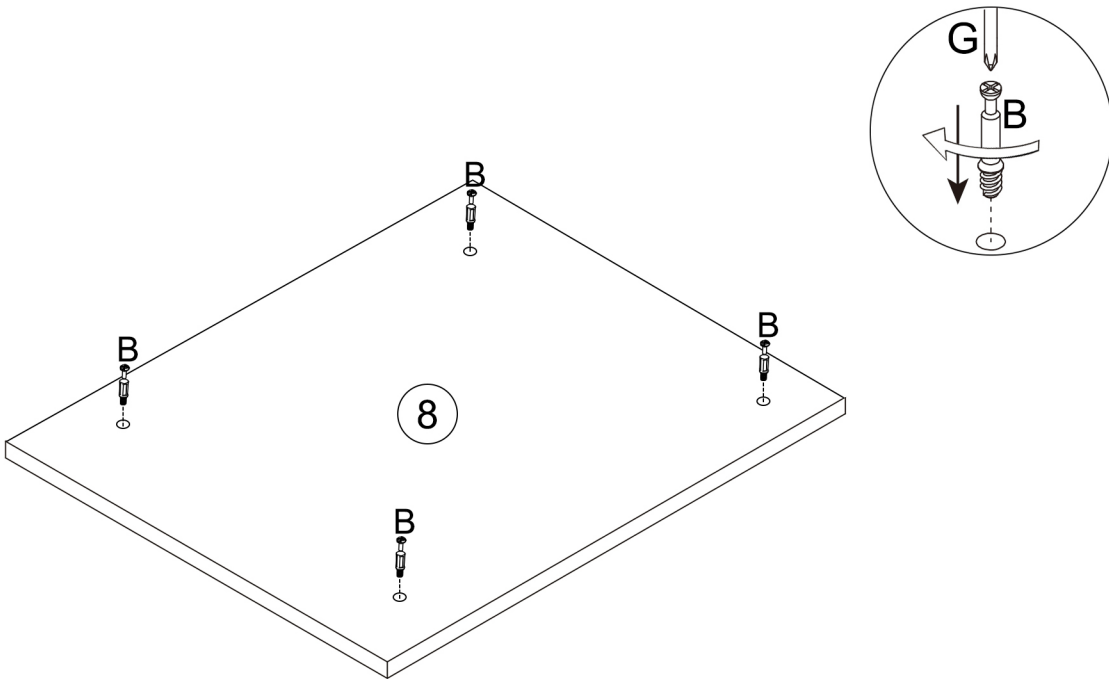


No. B
Quantity: 8Pcs
Cam Bolt

No. C
Quantity: 8Pcs
Cam Nut

No. G
Quantity: 1Pc
Allen Key

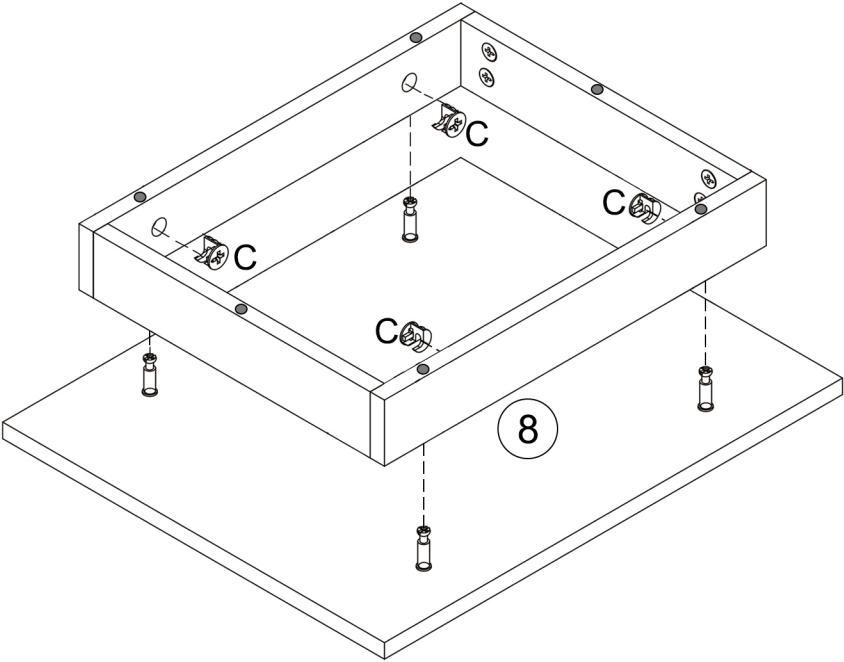
STEP 2



No. B
Quantity: 4Pcs
Cam Bolt

No. G
Quantity: 1Pc
Allen Key

STEP 3



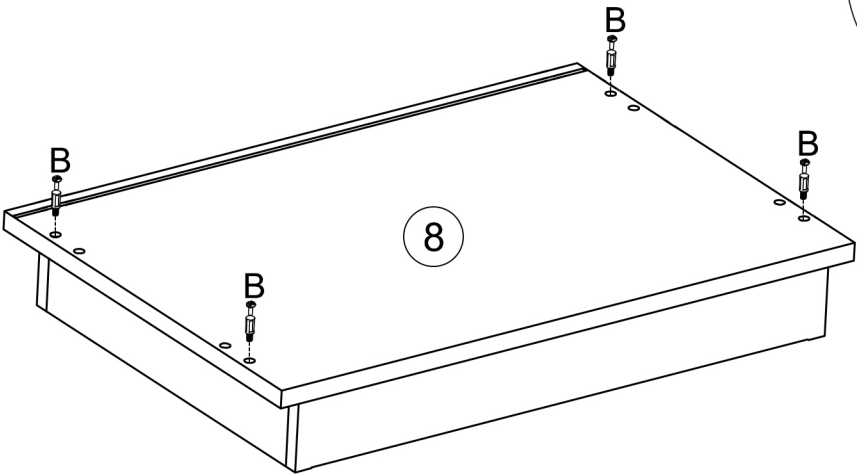
No. C
Quantity: 4Pcs
Cam Nut



No. G
Quantity: 1Pc
Allen Key



STEP 4



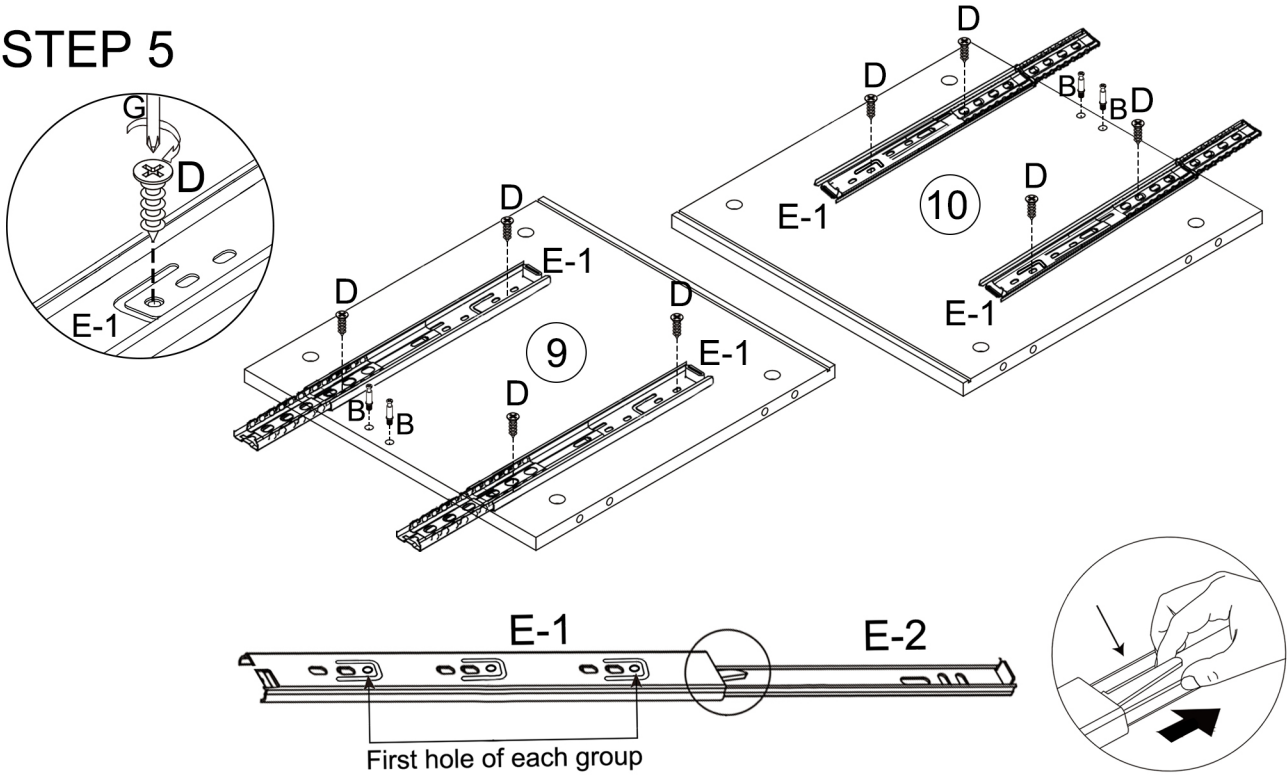
No. B
Quantity: 4Pcs
Cam Bolt



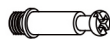
No. G
Quantity: 1Pc
Allen Key



STEP 5



No. B
Quantity: 4Pcs
Cam Bolt



No. D
Quantity: 8Pcs
Screw M3.5*14mm



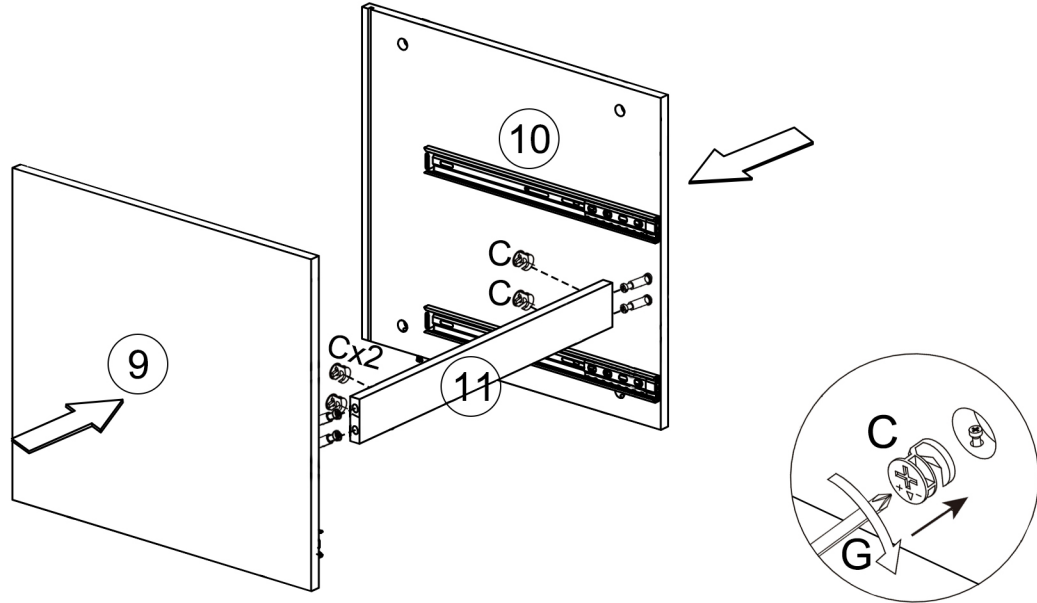
No. E-1
Quantity: 4Pcs
Guide



No. G
Quantity: 1Pc
Allen Key



STEP 6



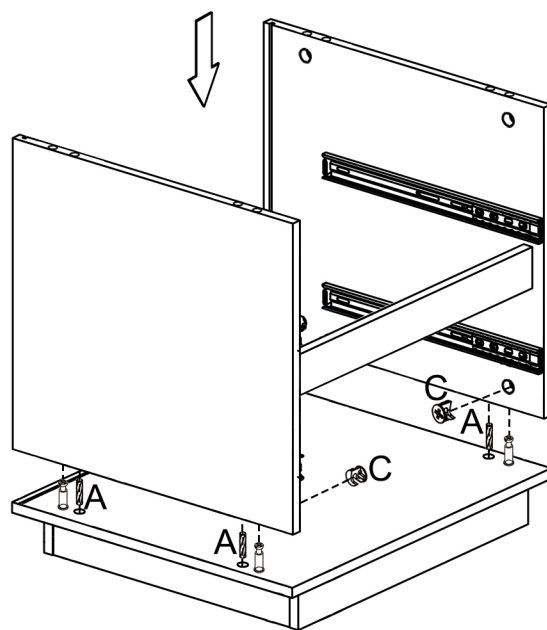
No. C
Quantity: 4cs
Cam Nut



No. G
Quantity: 1Pc
Allen Key



STEP 7



No. A
Quantity: 4Pcs
Dowel



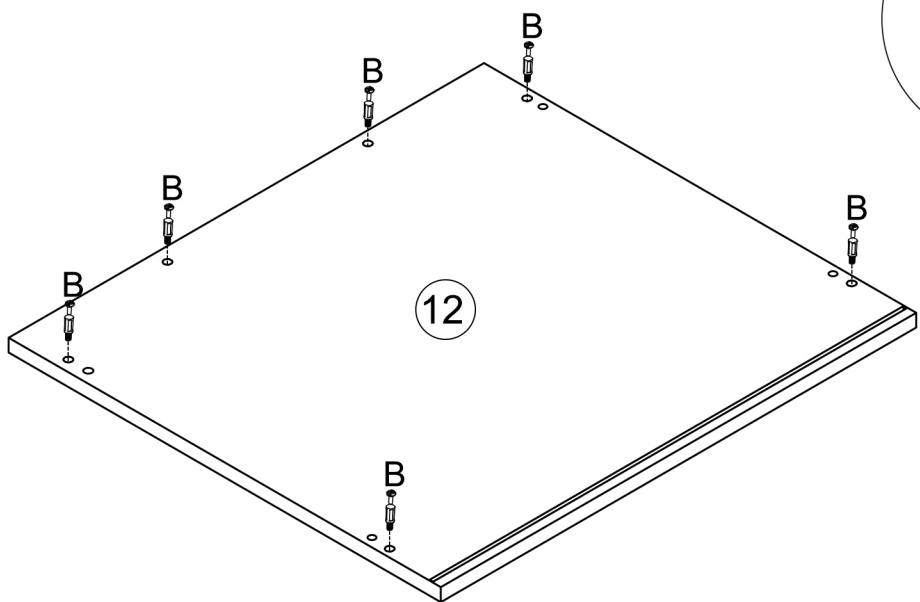
No. C
Quantity: 4Pcs
Cam Nut



No. G
Quantity: 1Pc
Allen Key



STEP 8



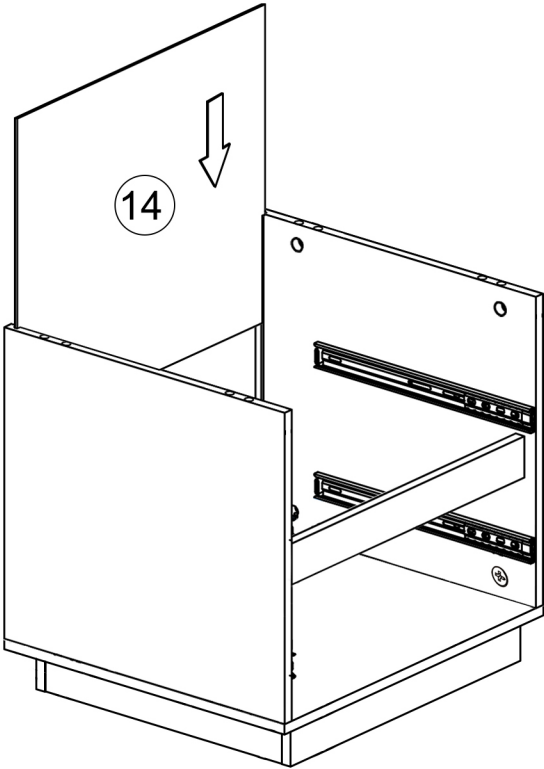
No. B
Quantity: 6Pcs
Cam Bolt



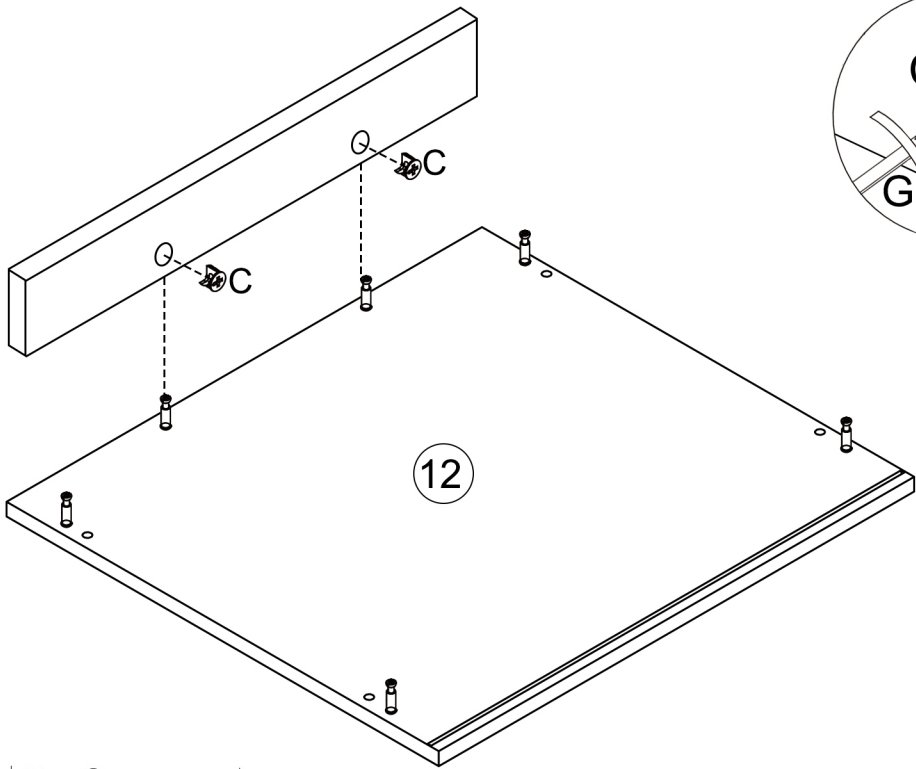
No. G
Quantity: 1Pc
Allen Key



STEP 9



STEP 10



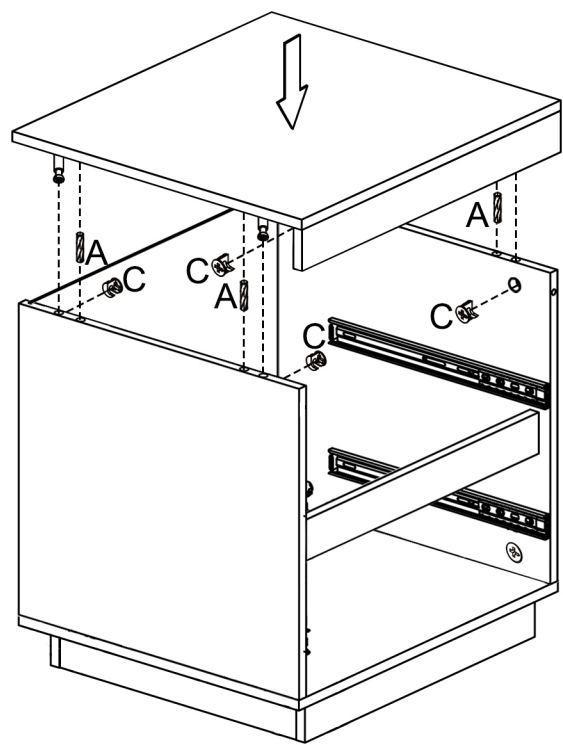
No. C
Quantity: 2Pcs
Cam Nut



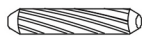
No. G
Quantity: 1Pc
Allen Key



STEP 11



No. A
Quantity: 4Pcs
Dowel



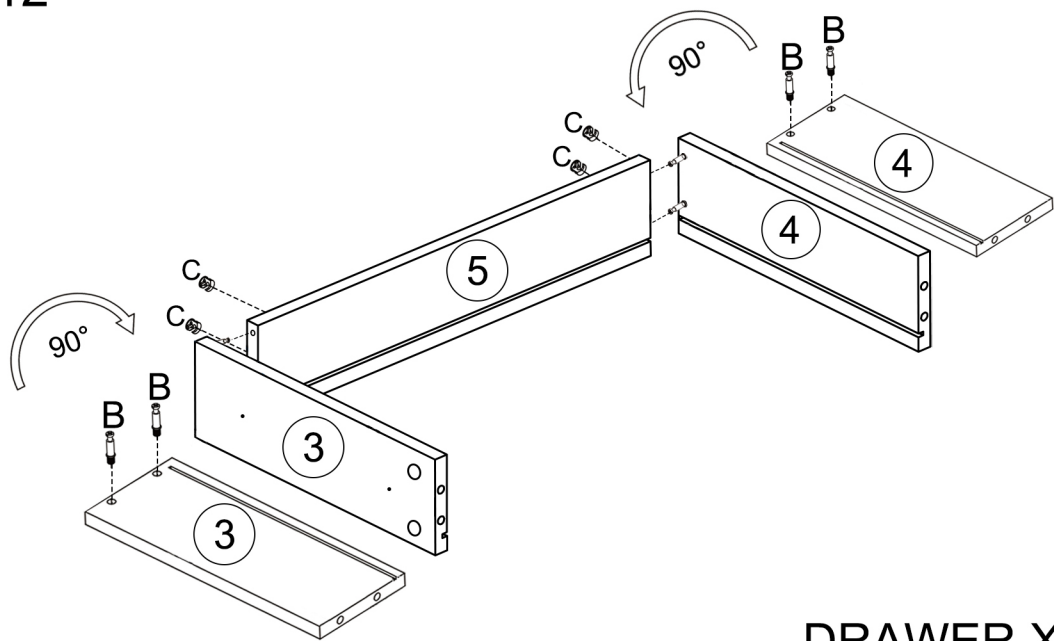
No. C
Quantity: 4Pcs
Cam Nut



No. G
Quantity: 1Pc
Allen Key



STEP 12



DRAWER X 2

No. B
Quantity: 8Pcs
Cam Bolt



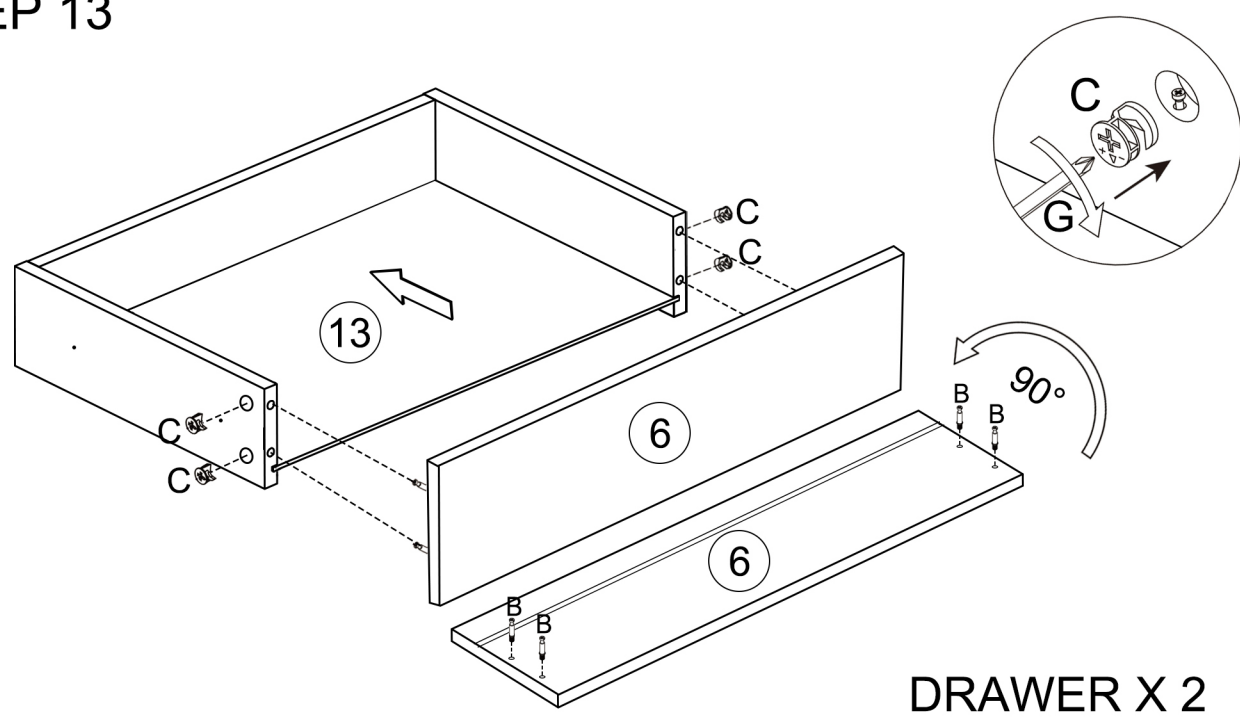
No. C
Quantity: 8Pcs
Cam Nut



No. G
Quantity: 1Pc
Allen Key

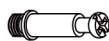


STEP 13



DRAWER X 2

No. B
Quantity: 8Pcs
Cam Bolt



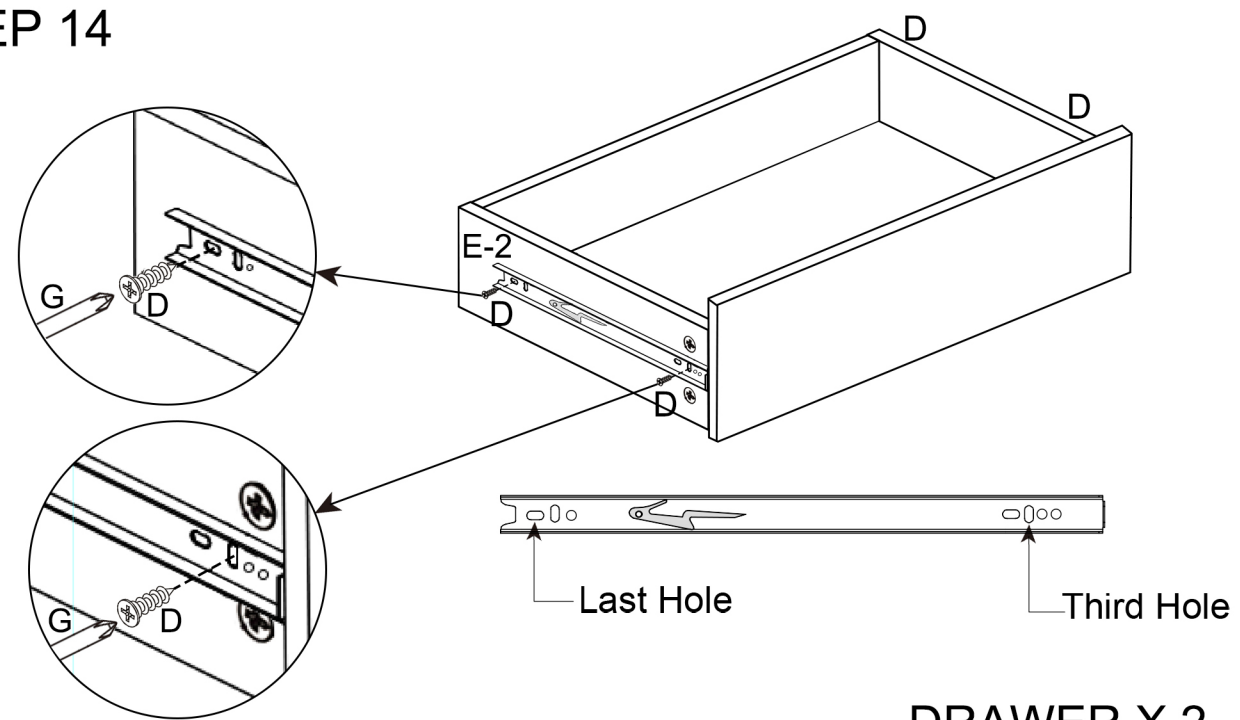
No. C
Quantity: 8Pcs
Cam Nut



No. G
Quantity: 1Pc
Allen Key



STEP 14

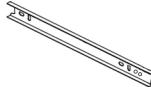


DRAWER X 2

No. D
Quantity: 8Pcs
Screw M3.5*14mm



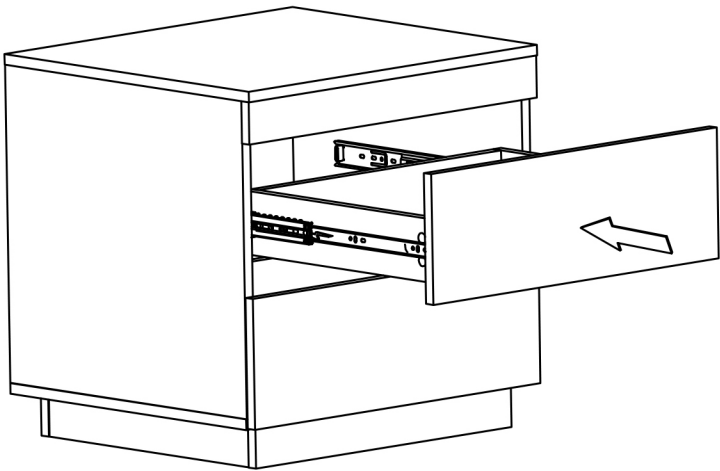
No. E-2
Quantity: 4Pcs
Guide



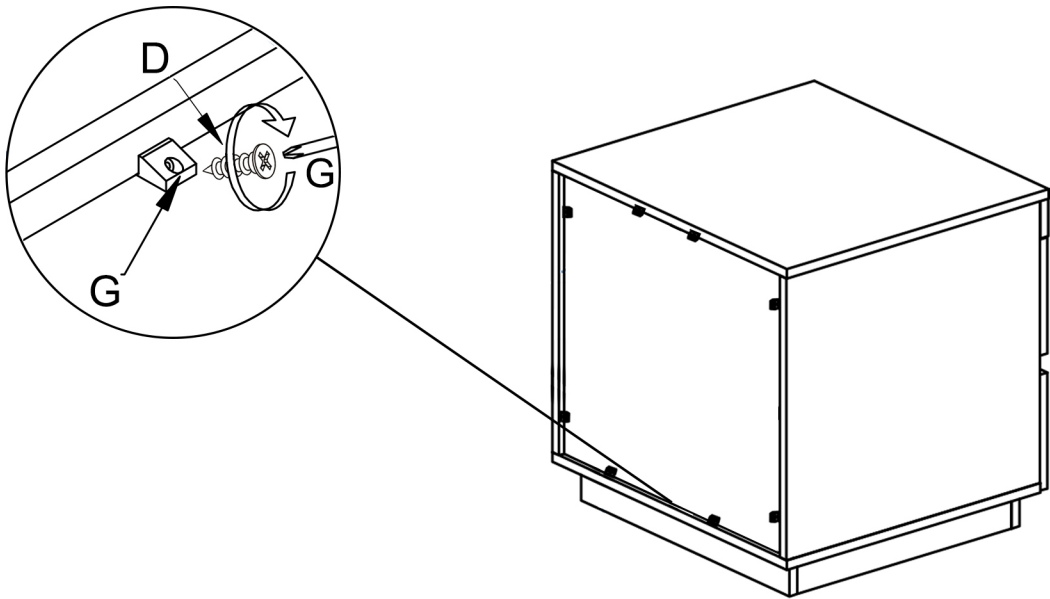
No. G
Quantity: 1Pc
Allen Key



STEP 15



STEP 16



No. D
Quantity: 8Pcs
Screw M3.5*14mm



No. F
Quantity:8Pcs
Back Plate Clamp



No. G
Quantity:1Pc
Allen Key



Great job. You're done!

Don't forget to share how it looks in
your space and tag us on Instagram.
[@lifelyhome](#)[#homewithlifely!](#)