

# Assembly Instruction

## Nobu Series



# Lifely\*

Product Code  
NB TB8411-OK TALLBOY

Dimension (W x D x H)  
800x400x1095mm

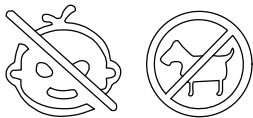
---

### Important

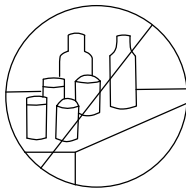
Please read through instruction carefully  
Before assembly and keep for future reference.

For our full catalogue of assembly instructions,  
Visit: [lifely.com.au/assembly](http://lifely.com.au/assembly).

## Important Tips and Maintenance



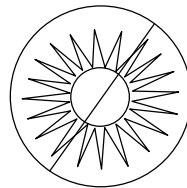
1.  
Keep children and animals away from working area as smaller parts may cause choking if swallowed.



2.  
Never place liquids or anything damp upon furniture as it will mark. Ensure a coaster or running is beneath.



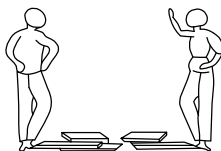
3.  
Never use ammonia based cleaning products as it will damage the finish



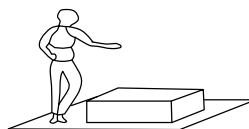
4.  
To avoid fading, keep furniture out of direct sunlight.



5.  
Use a soft or damp cloth (dry cloth) when wiping or cleaning surfaces.



6.  
Two person are required.



7.  
Lay a soft matt down to protect the furniture piece before and during assembly.

So your relationship is strong. But is it flat-pack furniture strong? Unless you're an aerospace engineer, assembling furniture can be slightly stressful. We recommend meditating quietly, pouring yourself a herbal tea (or slightly less herbal wine) and tackling things one step at a time. If you feel a passive aggressive remark coming on, try a compliment instead. E.g. "You're so good looking".

This 24-Step assembly should take around 40 minutes with an Allen Key or 25 minutes with an electric drill. Godspeed.

Designed for everyday

## Component Hardware

Please check you have all the fittings  
part or tools are listed below.

No. A  
Quantity:64Pcs  
Dowel 6 X 30mm



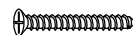
No. B  
Quantity:4Pcs  
Bolt M7 X 60mm



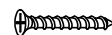
No. C  
Quantity:64Pcs  
Screw M3.5 X 12mm



No. D  
Quantity:8Pcs  
Screw M4 X 38mm



No. E  
Quantity:16Pcs  
Screw M4 X 25mm



No. F  
Quantity:10Pcs  
M6 X 50mm



No. G  
Quantity:8Pcs  
Handle



No. H  
Quantity:20Sets  
Cam Bolt + Cam Nut



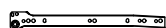
No. I  
Quantity:4Pcs  
Pvc Glide



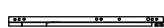
No. J  
Quantity:24Pcs  
Screw M3.5 X 16mm



No. K  
Quantity:8Pcs  
Drawer Runner A-L/R



No. L  
Quantity:8Pcs  
Drawer Runner B-L/R



No. M  
Quantity:1Pc  
Allen Key



No. N  
Quantity:1Pc  
Spanner



No. O  
Quantity:8Sets  
Plastic Corner Block



No. P  
Quantity:1Pc  
PVC H



No. Q  
Quantity:4Pcs  
Flange Nut



No. R  
Quantity:8Pcs  
Screw M4 X 30mm



No. S  
Quantity:2Pcs  
Anti-Tip Strap



No. T  
Quantity:2Pcs  
M4 X 16mm



No. U  
Quantity:2Pcs  
M4 X 25mm



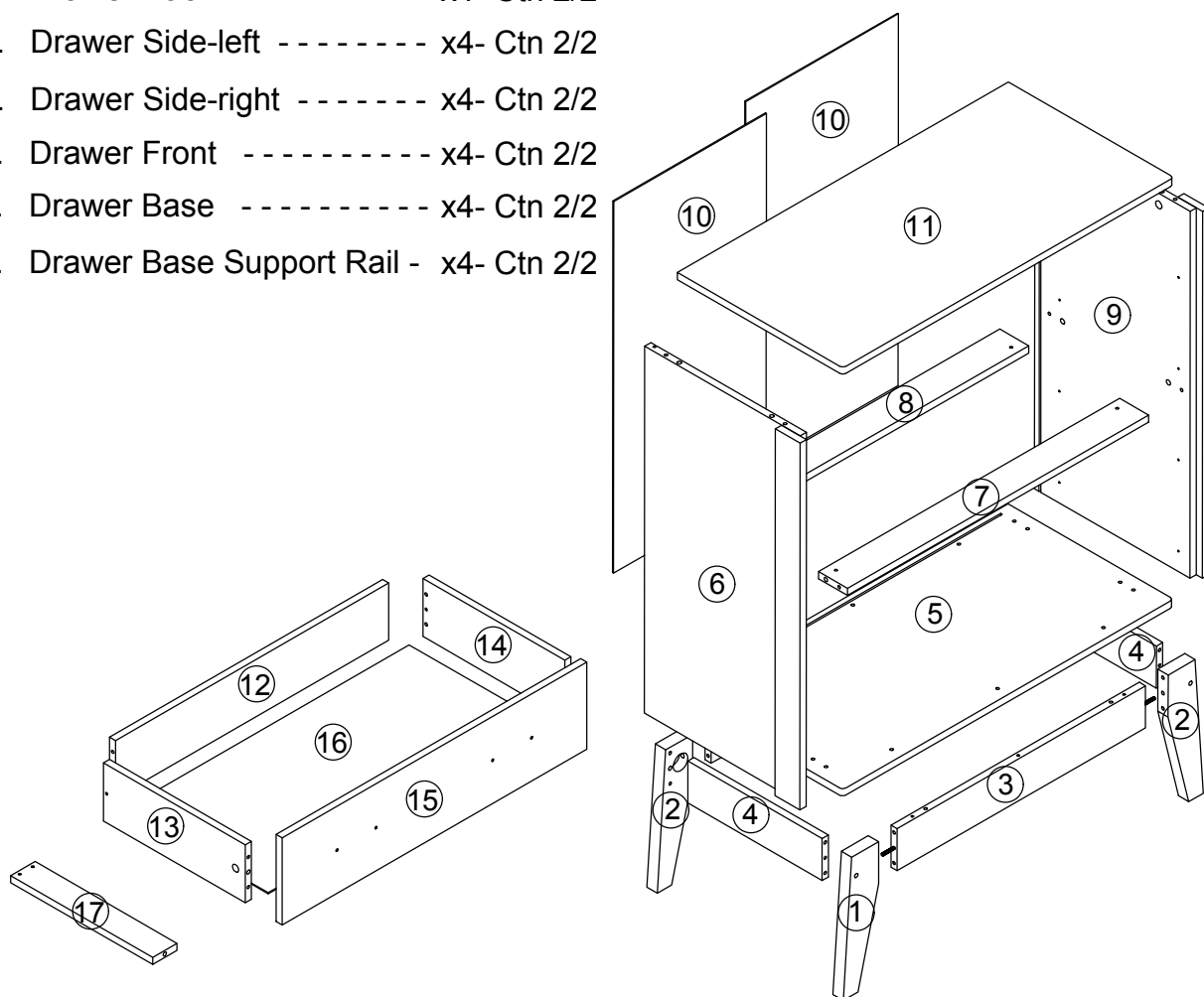
No. V  
Quantity:2Pcs  
PVC Wall Plug



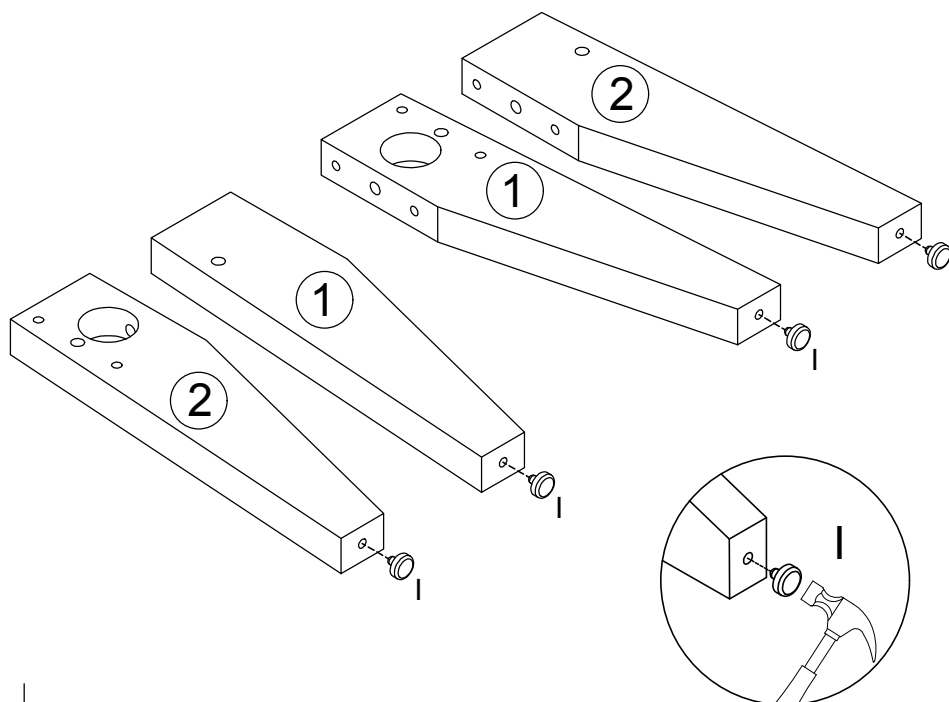
## Component Panel & Part List

Please check you have all the panels  
are listed below.

1. Pillar Leg-left - - - - - x2- Ctn 2/2
2. Pillar Leg-right - - - - - x2- Ctn 2/2
3. Support Leg-front & back - - x2- Ctn 2/2
4. Support Leg-left & right - - - x2- Ctn 2/2
5. Bottom Panel - - - - - x1- Ctn 1/2
6. Side Panel-left - - - - - x1- Ctn 1/2
7. Upper Crossbar-front - - - - x1- Ctn 1/2
8. Upper Crossbar-back - - - - x1- Ctn 1/2
9. Side Panel-right - - - - - x1- Ctn 1/2
10. Back Panel - - - - - x2- Ctn 1/2
11. Top Panel - - - - - x1- Ctn 1/2
12. Drawer Back - - - - - x4- Ctn 2/2
13. Drawer Side-left - - - - - x4- Ctn 2/2
14. Drawer Side-right - - - - - x4- Ctn 2/2
15. Drawer Front - - - - - x4- Ctn 2/2
16. Drawer Base - - - - - x4- Ctn 2/2
17. Drawer Base Support Rail - x4- Ctn 2/2



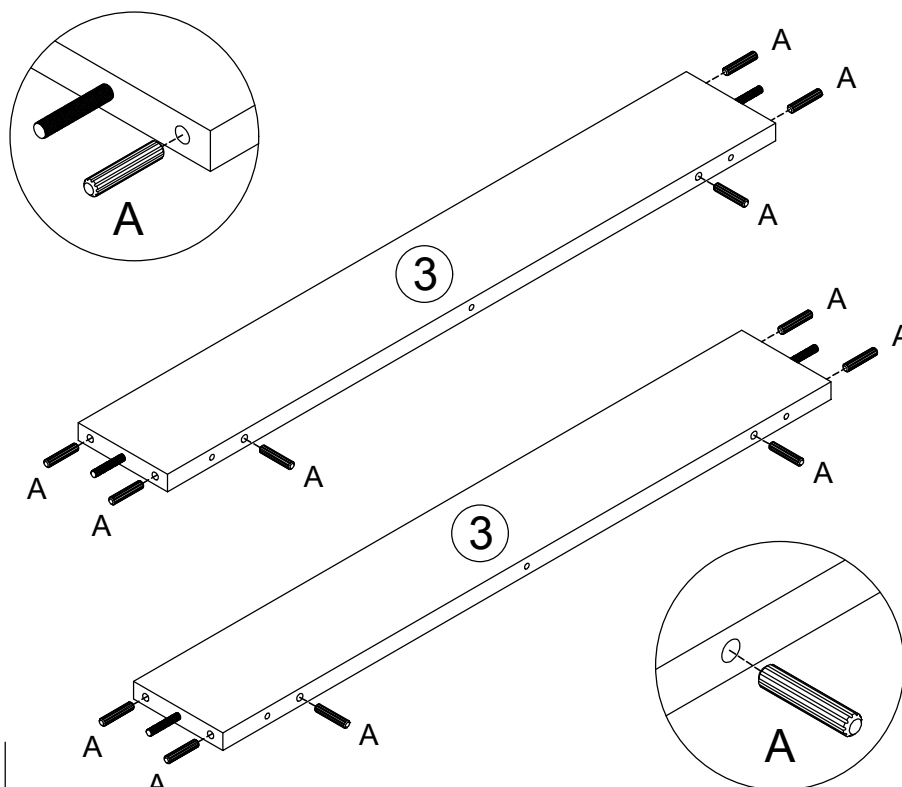
## STEP 1



No. I  
Quantity: 4Pcs  
PVC Glide



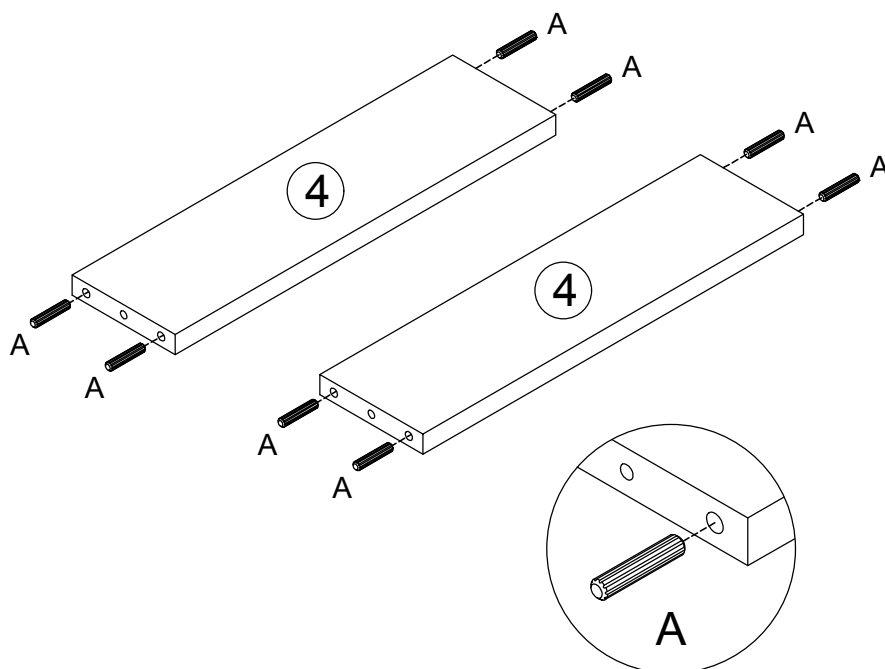
## STEP 2



No. A  
Quantity: 12Pcs  
Dowel 6 X 30mm



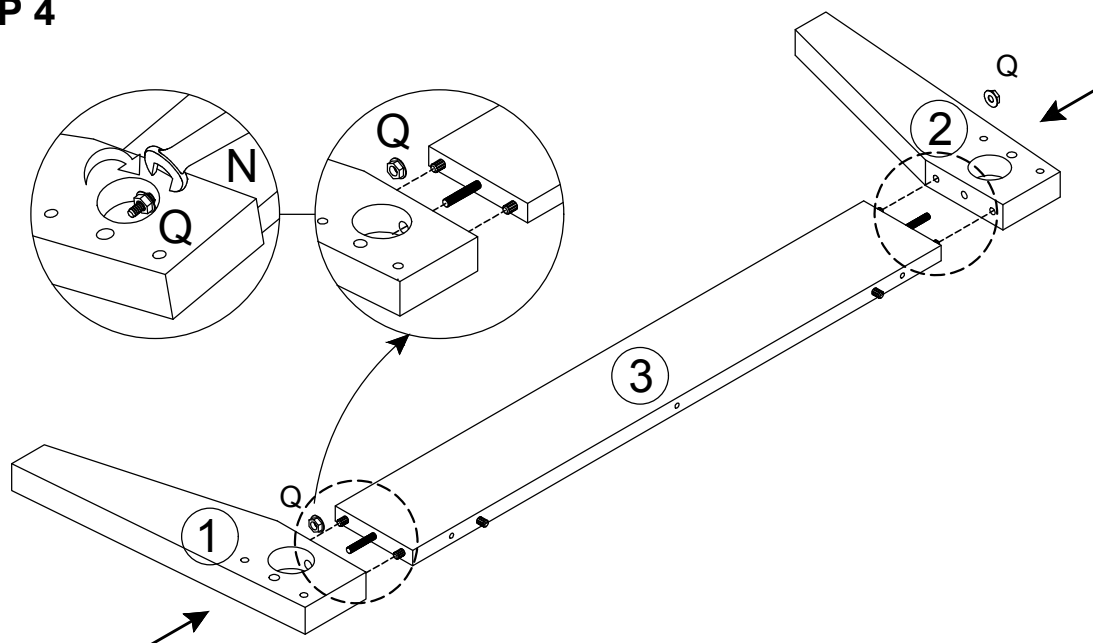
## STEP 3



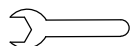
No. A  
Quantity: 8Pcs  
Dowel 6 X 30mm



## STEP 4



No. N  
Quantity: 1Pc  
Spanner

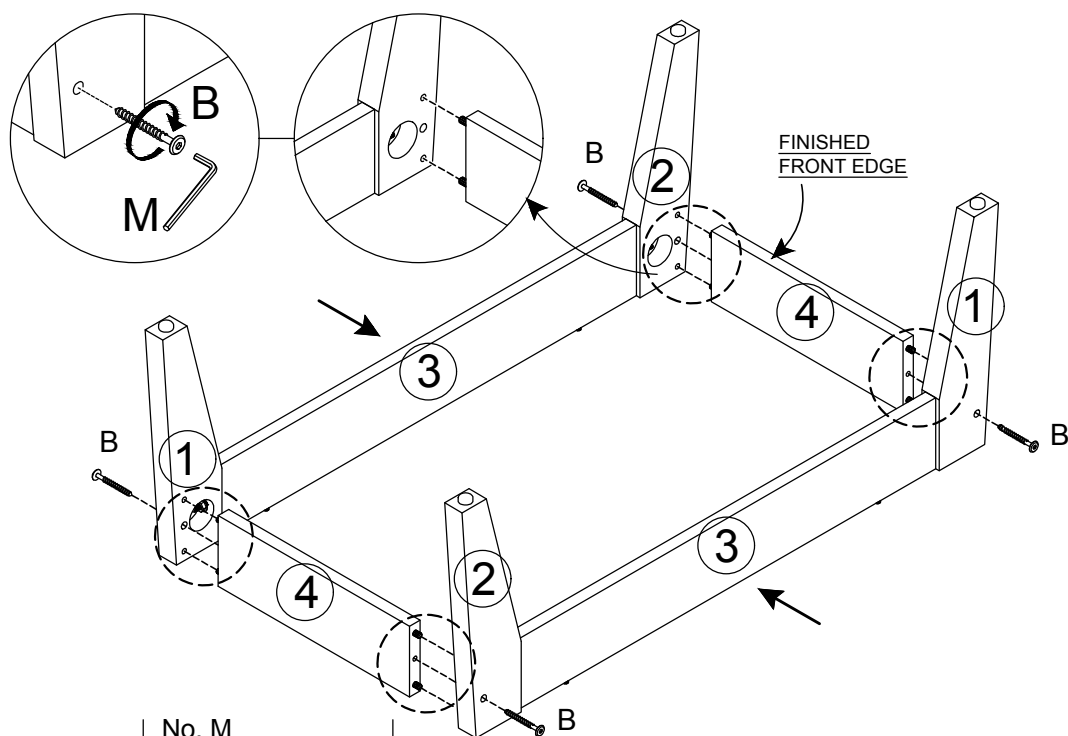


No. Q  
Quantity: 4Pcs  
Flange Nut



# 2X

## STEP 5



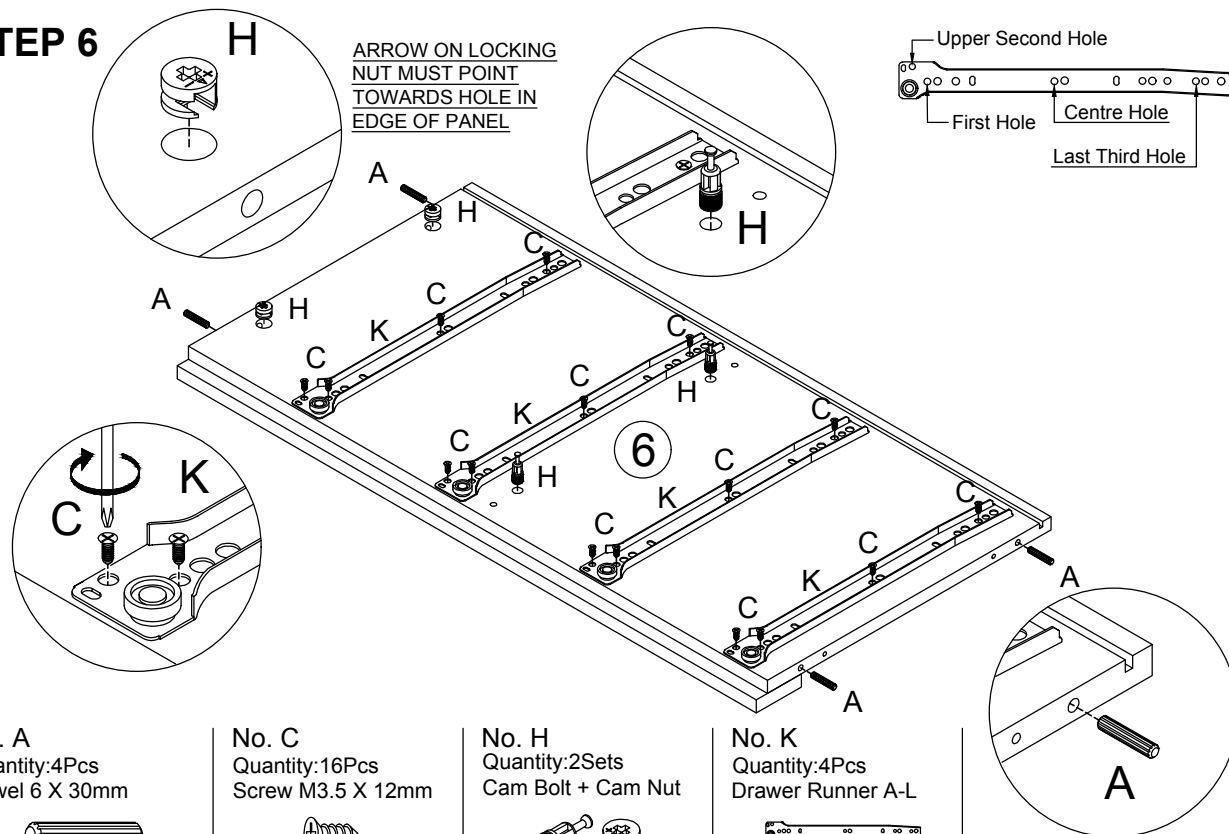
No. B  
Quantity: 4Pcs  
Bolt M7 X 60mm



No. M  
Quantity: 1Pc  
Allen Key



## STEP 6



No. A  
Quantity: 4Pcs  
Dowel 6 X 30mm



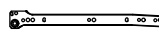
No. C  
Quantity: 16Pcs  
Screw M3.5 X 12mm



No. H  
Quantity: 2Sets  
Cam Bolt + Cam Nut



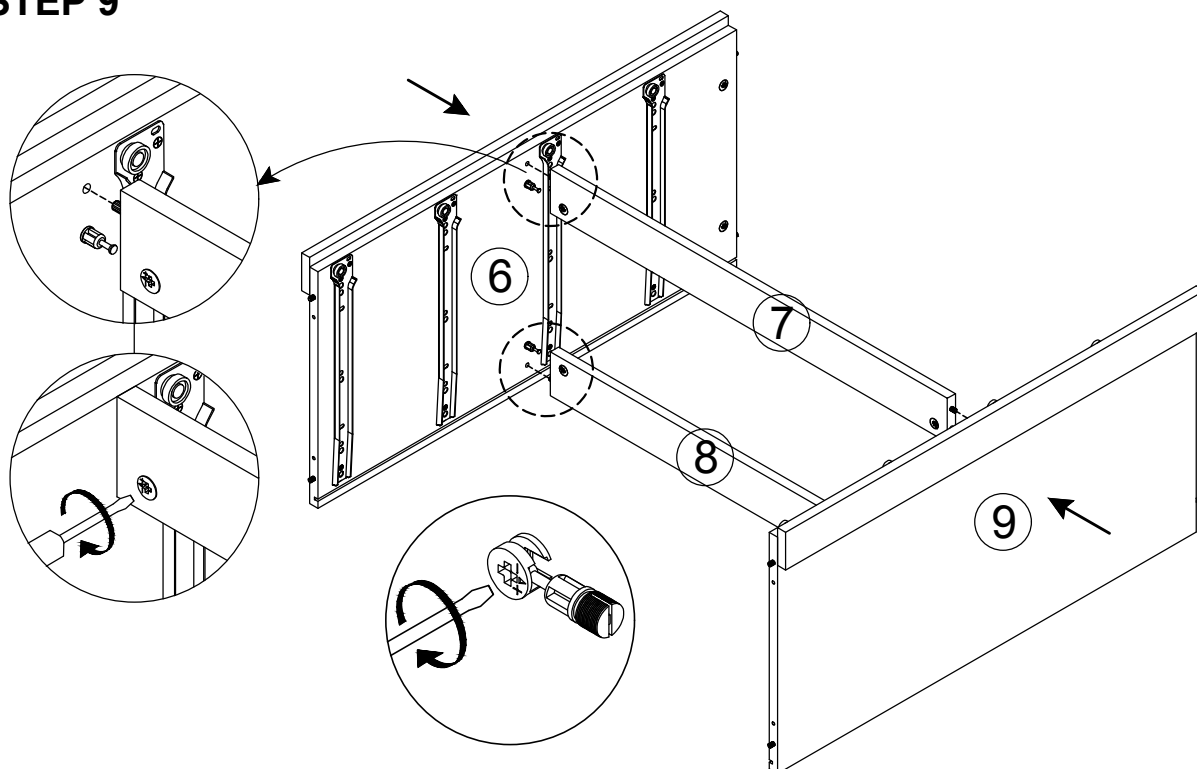
No. K  
Quantity: 4Pcs  
Drawer Runner A-L



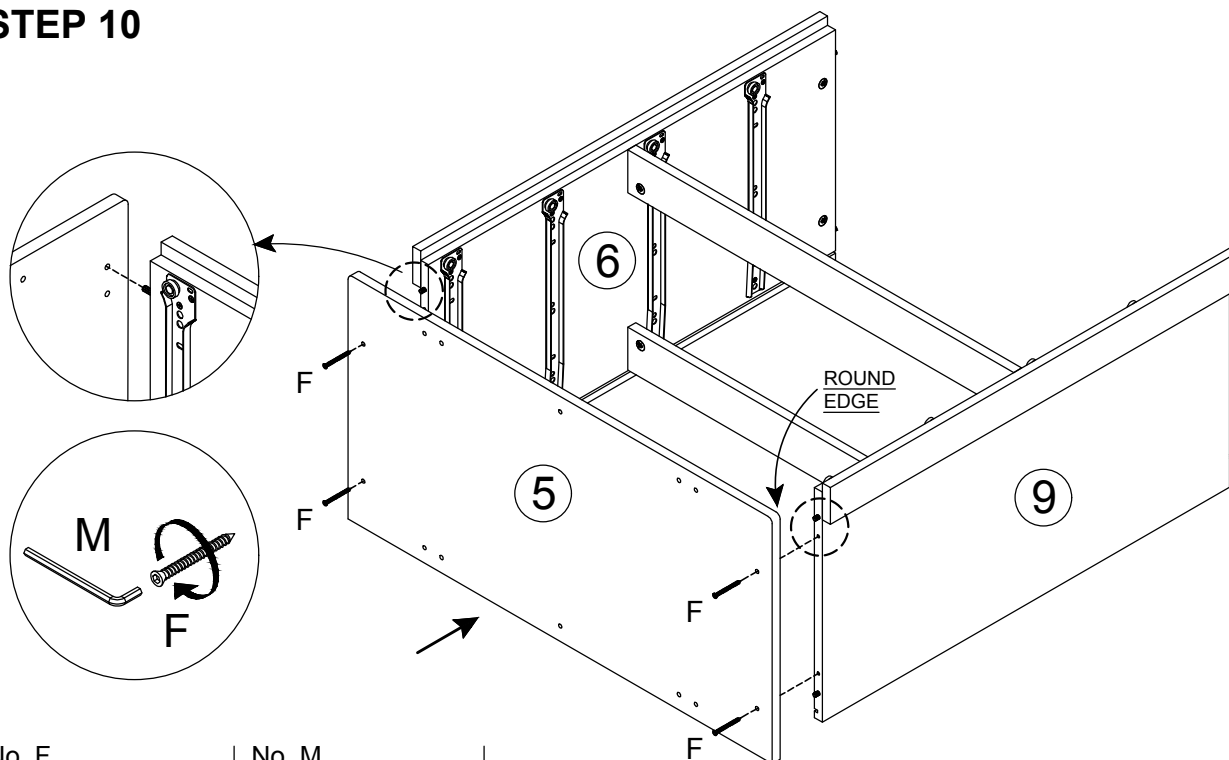




## STEP 9



## STEP 10



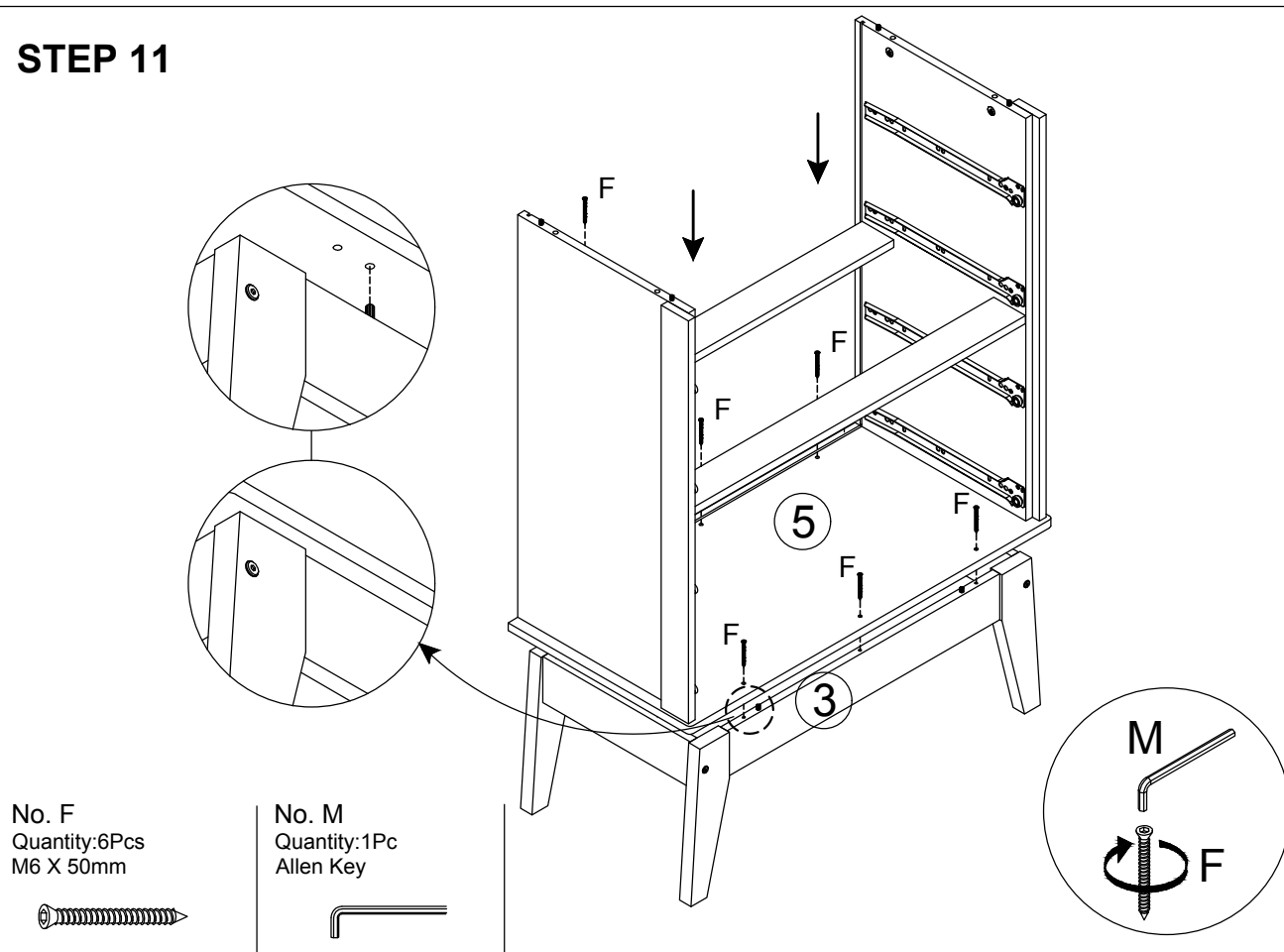
No. F  
Quantity: 4Pcs  
M6 X 50mm



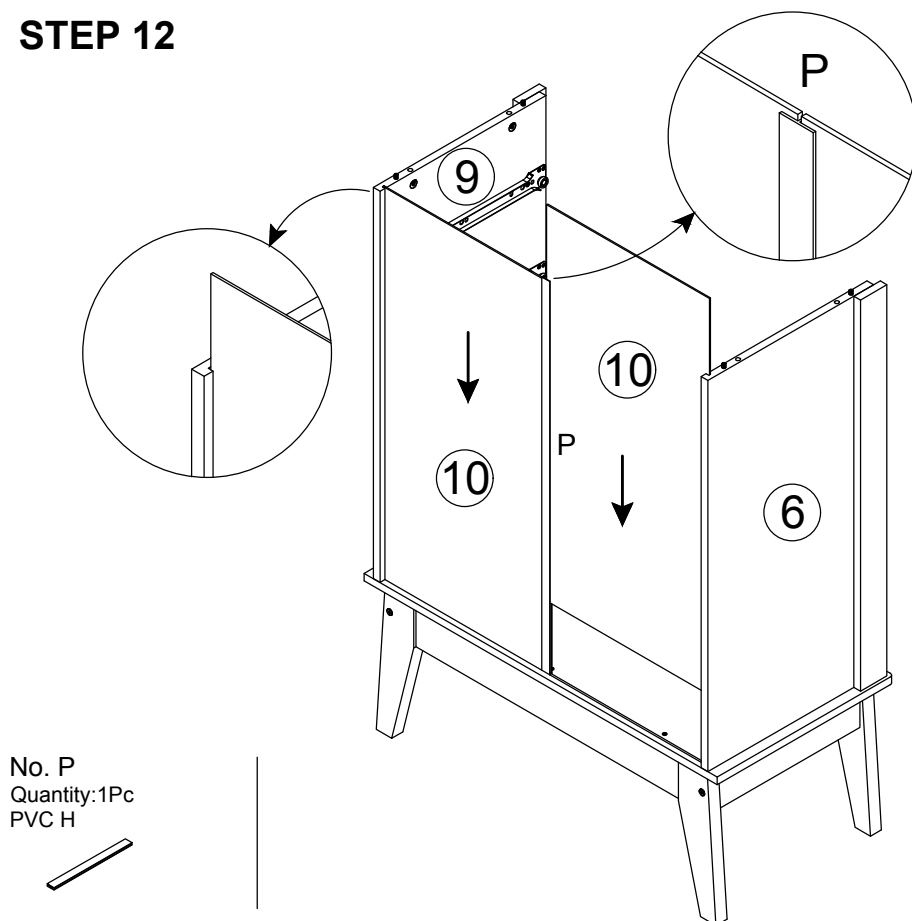
No. M  
Quantity: 1Pc  
Allen Key



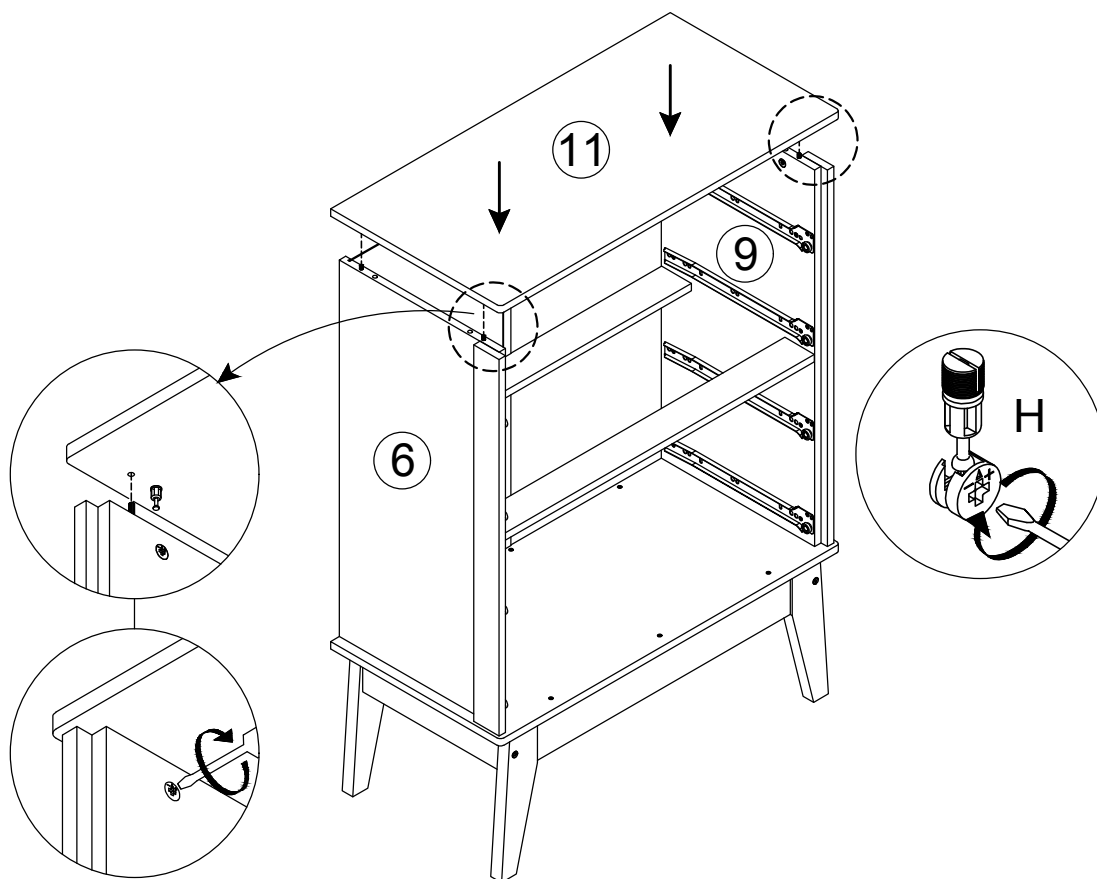
## STEP 11



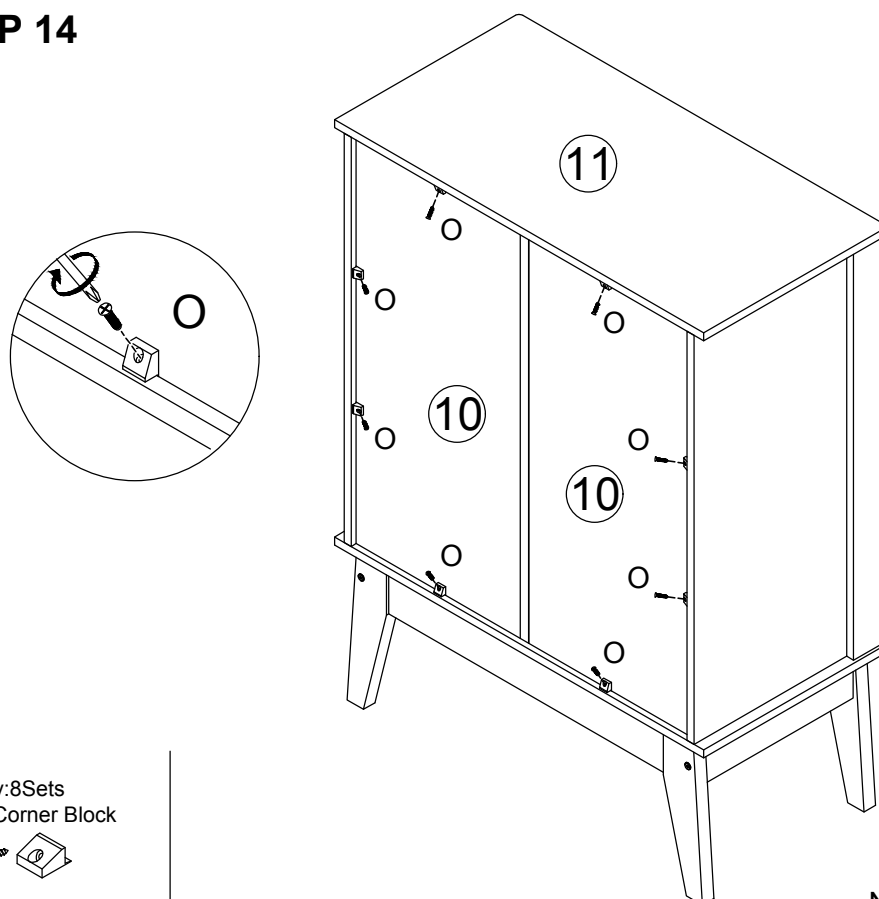
## STEP 12



## STEP 13



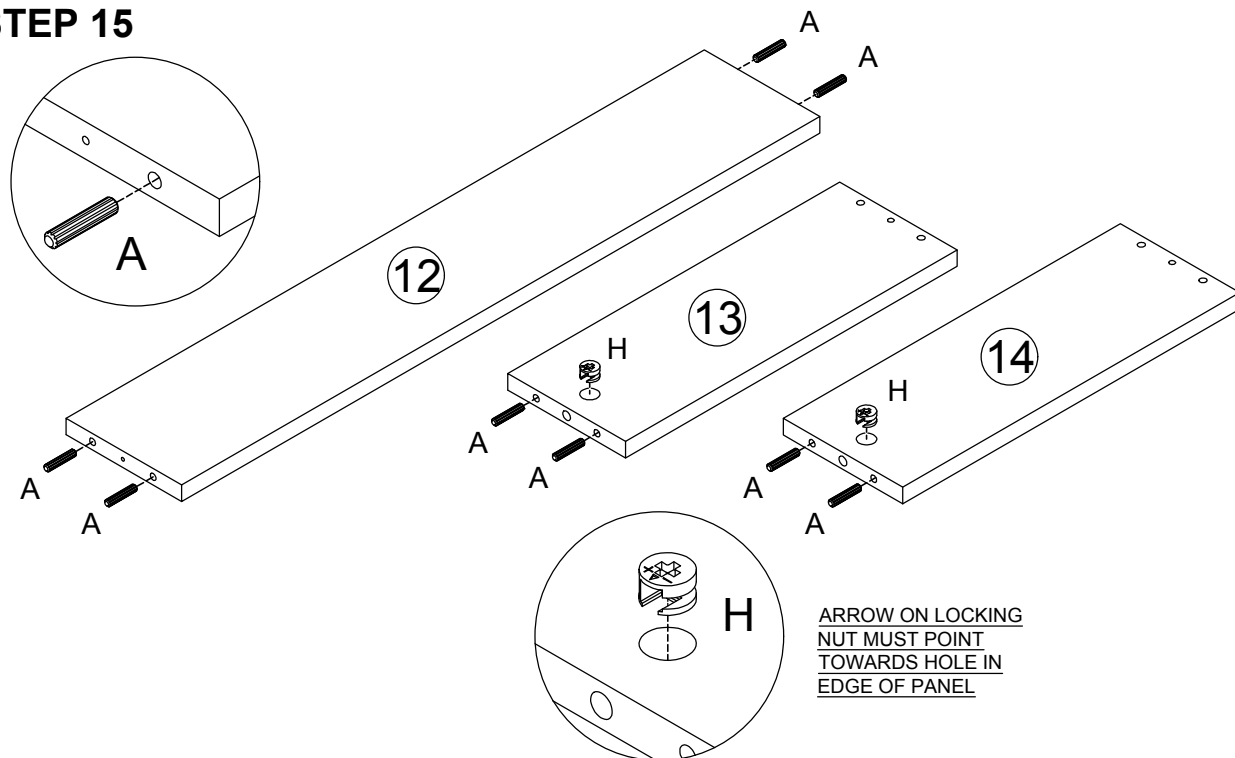
## STEP 14



No. O  
Quantity: 8 Sets  
Plastic Corner Block



## STEP 15



No. A  
Quantity: 32Pcs  
Dowel 6 X 30mm

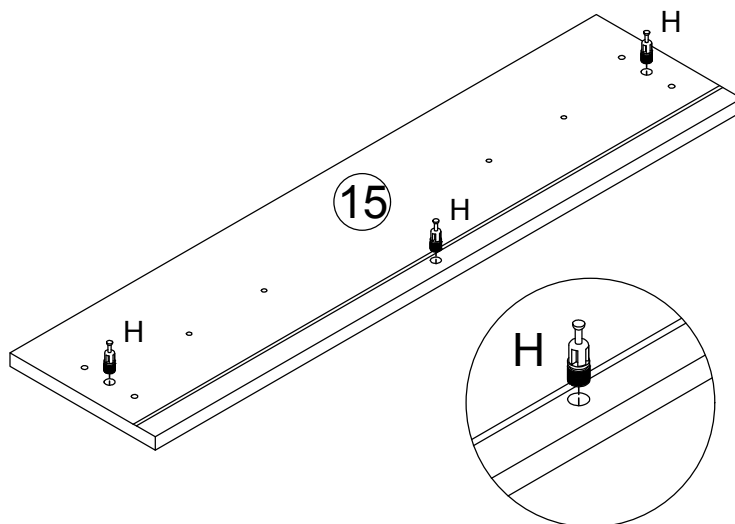


No. H  
Quantity: 8Pcs  
Cam Nut



**4X**

## STEP 16

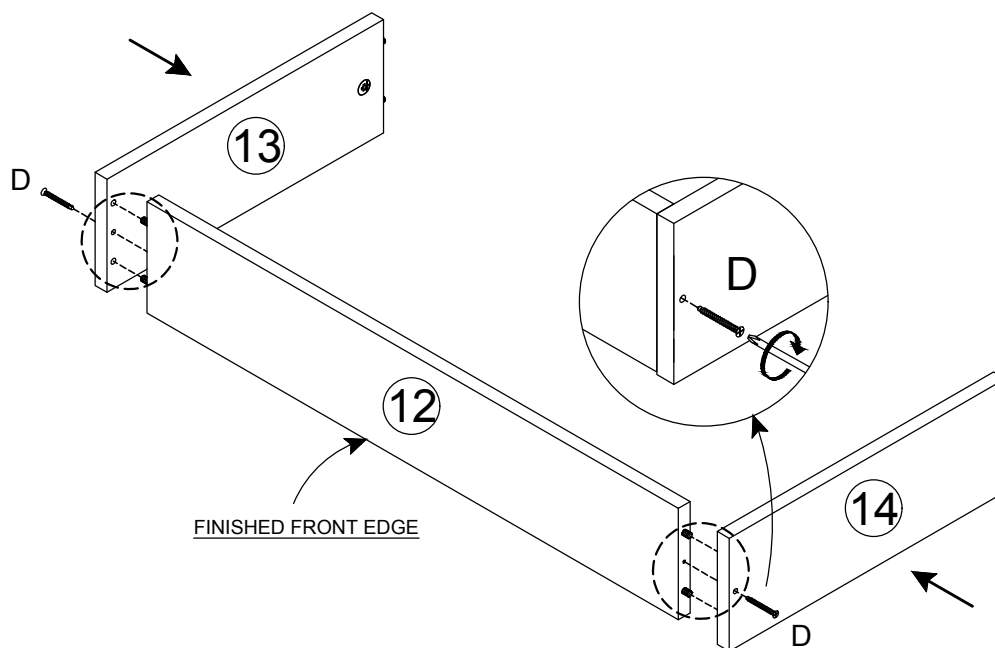


No. H  
Quantity: 12Pcs  
Cam Bolt



**4X**

## STEP 17

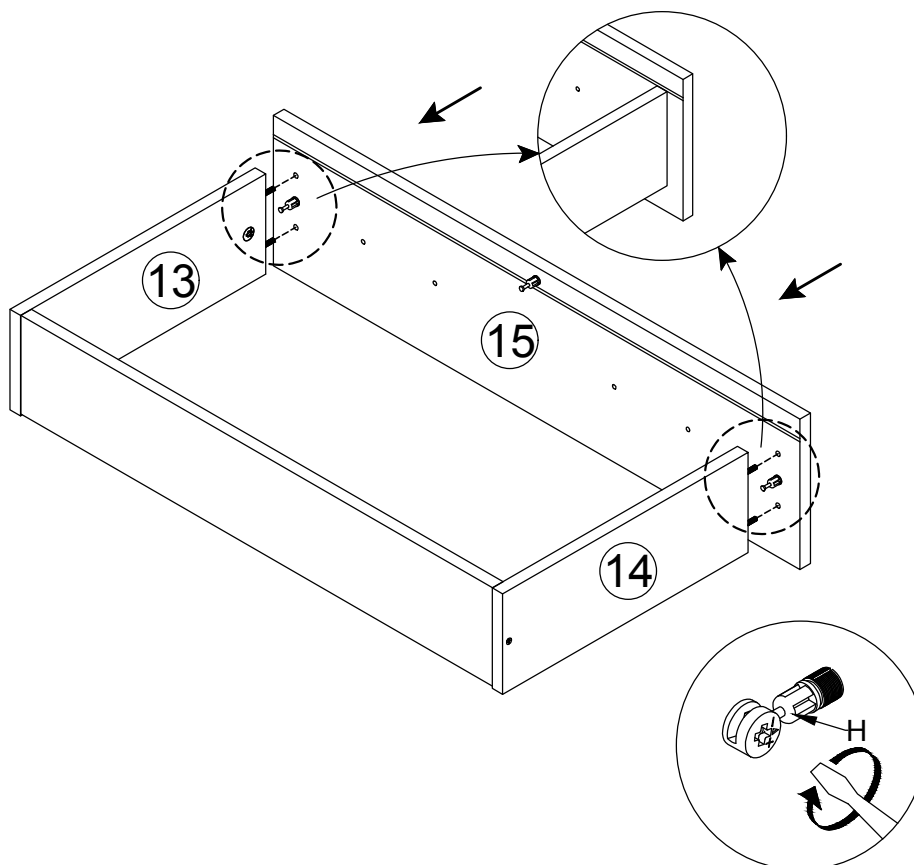


No. D  
Quantity: 8Pcs  
Screw M4 X 38mm



**4X**

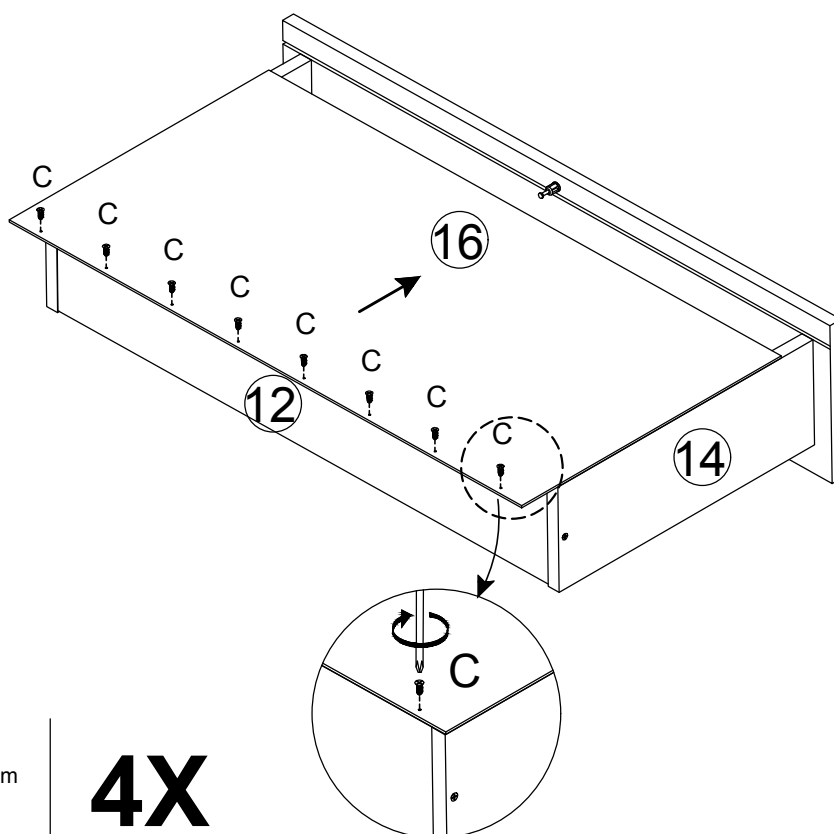
## STEP 18



**4X**

NB TB8411-OK 14

## STEP 19

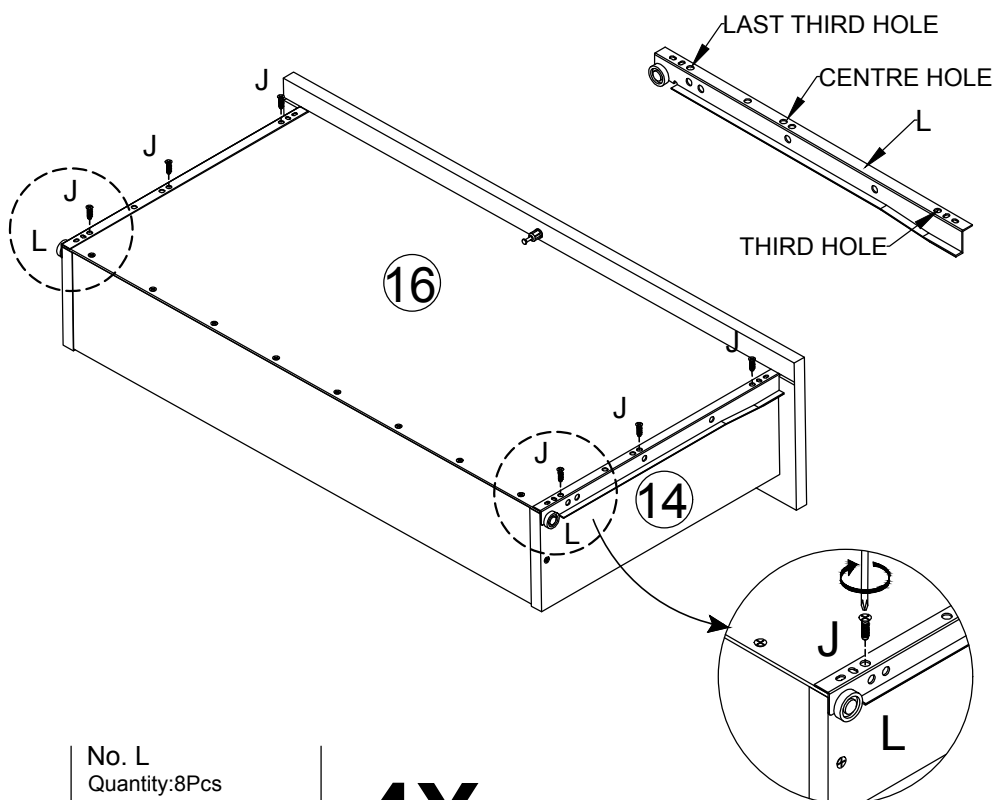


No. C  
Quantity: 32Pcs  
Screw M3.5 X 12mm



**4X**

## STEP 20



No. J  
Quantity: 24Pcs  
Screw M3.5 X 16mm

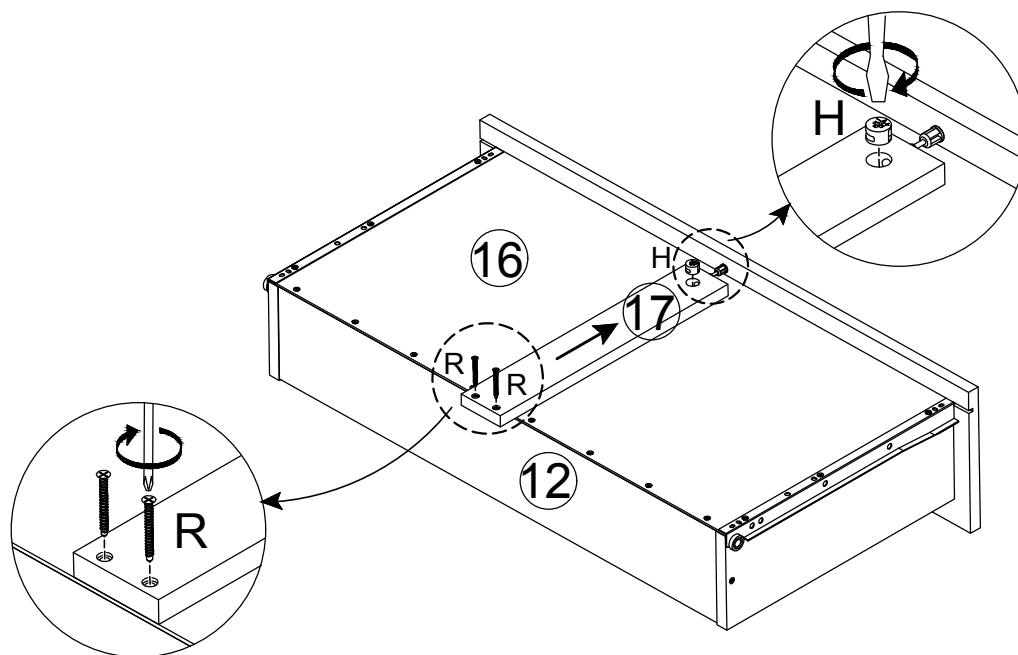


No. L  
Quantity: 8Pcs  
Drawer Runner B-L/R



**4X**

## STEP 21



No. H  
Quantity: 4Pcs  
Cam Nut

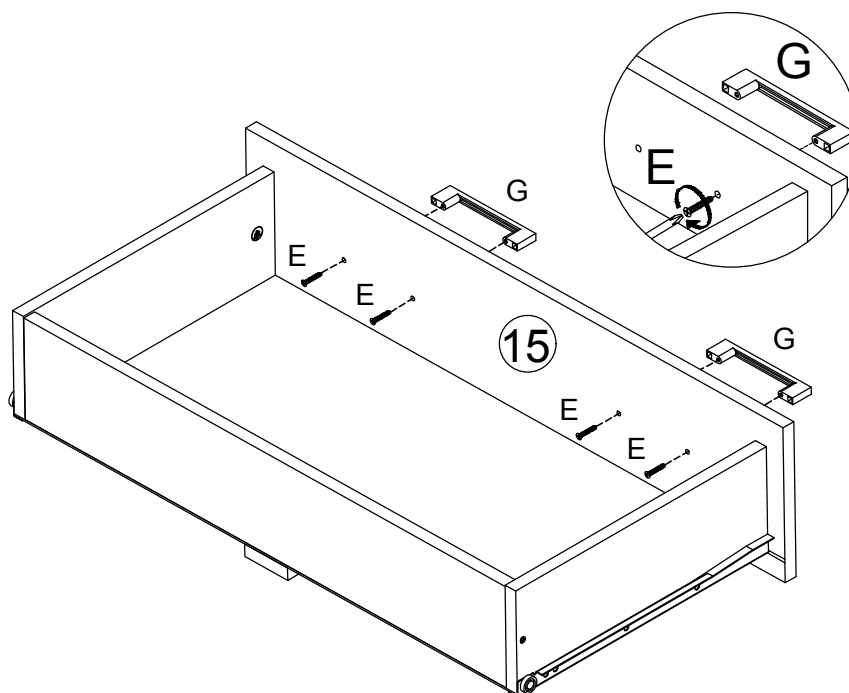


No. R  
Quantity: 8Pcs  
Screw M4 X 30mm



**4X**

## STEP 22



No. E  
Quantity: 16Pcs  
Screw M4 X 25mm



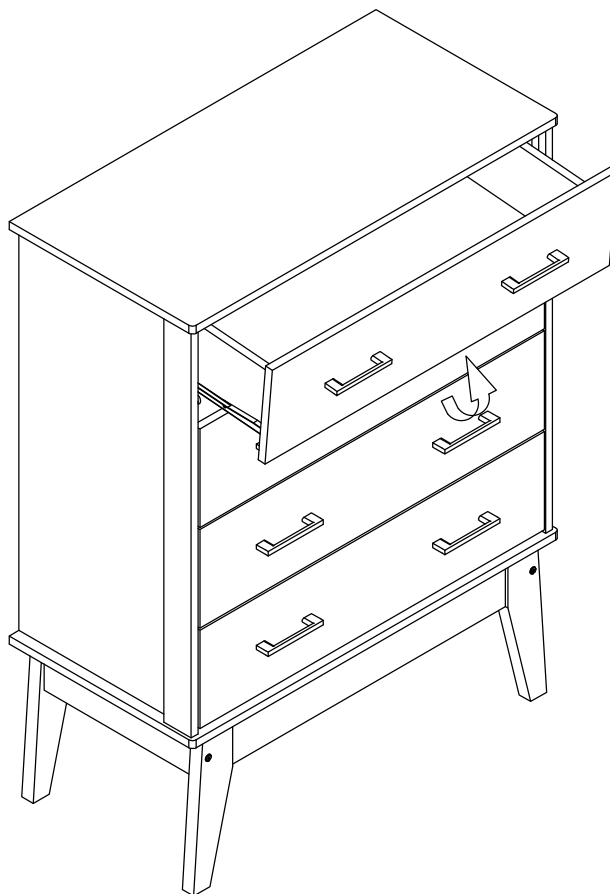
No. G  
Quantity: 8Pcs  
Handle



**4X**

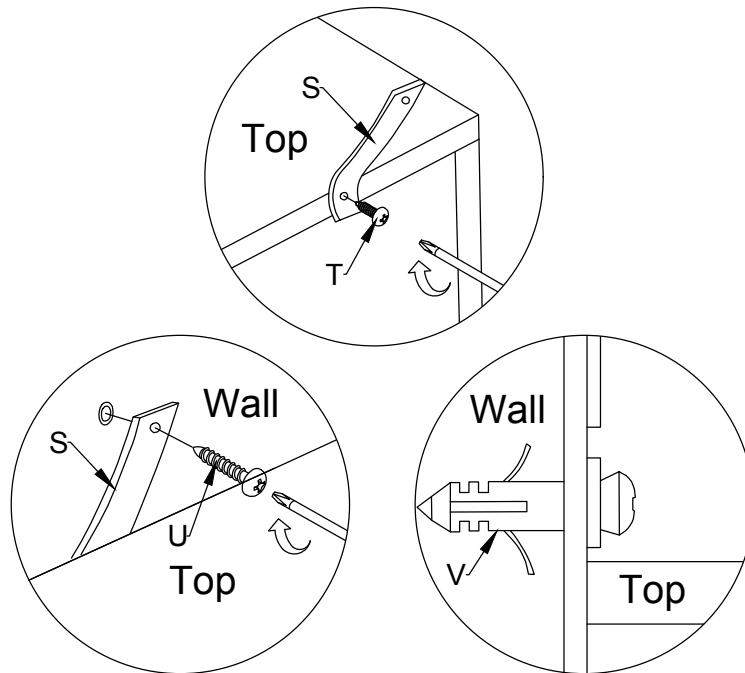


## STEP 23



## STEP 24





#### HARDWARE LIST



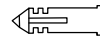
(S) Anti-Tip Strap- 2pcs



(U) M4 X 25MM - 2pcs



(T) M4 X 16MM - 2pcs



(V) PVC Wall Plug- 2pcs

#### WARNING

Serious or fatal injuries can occur from furniture tipping over. To prevent the furniture from tipping over we recommend that it is permanently fixed to the wall.

Wall fixing are not supplied with this product as different wall material required different types of fixing devices. Please make sure you use fixing suitable for the walls in your home.

[lifely.com.au](https://lifely.com.au)

Great job. You're done!

Don't forget to share how it looks in  
your space and tag us on Instagram.  
[@lifelyhome](#) [#homewithlifely!](#)